



**NORTHERN VIRGINIA TRANSPORTATION COMMISSION**

# **REGIONAL BUS PERFORMANCE ANALYSIS**

**PRESENTED BY: DAN GOLDFARB, PE  
APRIL 6, 2017**

# What are we doing?



- Evaluating Regional Bus Markets
- Focus Regional Operations
- Identifying Regional Opportunities (e.g., Gaps)

# Activities to Date



- Previous Presentations → System Characteristics
  - Baseline
  - Future
- Reviewed Jurisdictional Transit Development Plans
- Focus Today → Service Characteristics
- Providing Guidance for the Opportunities Analysis

# Technical Approach

- Focused Only on Bus
- Travelers Choices
- Perceived Time
- Network Analysis → Synergies



# Service Characteristics

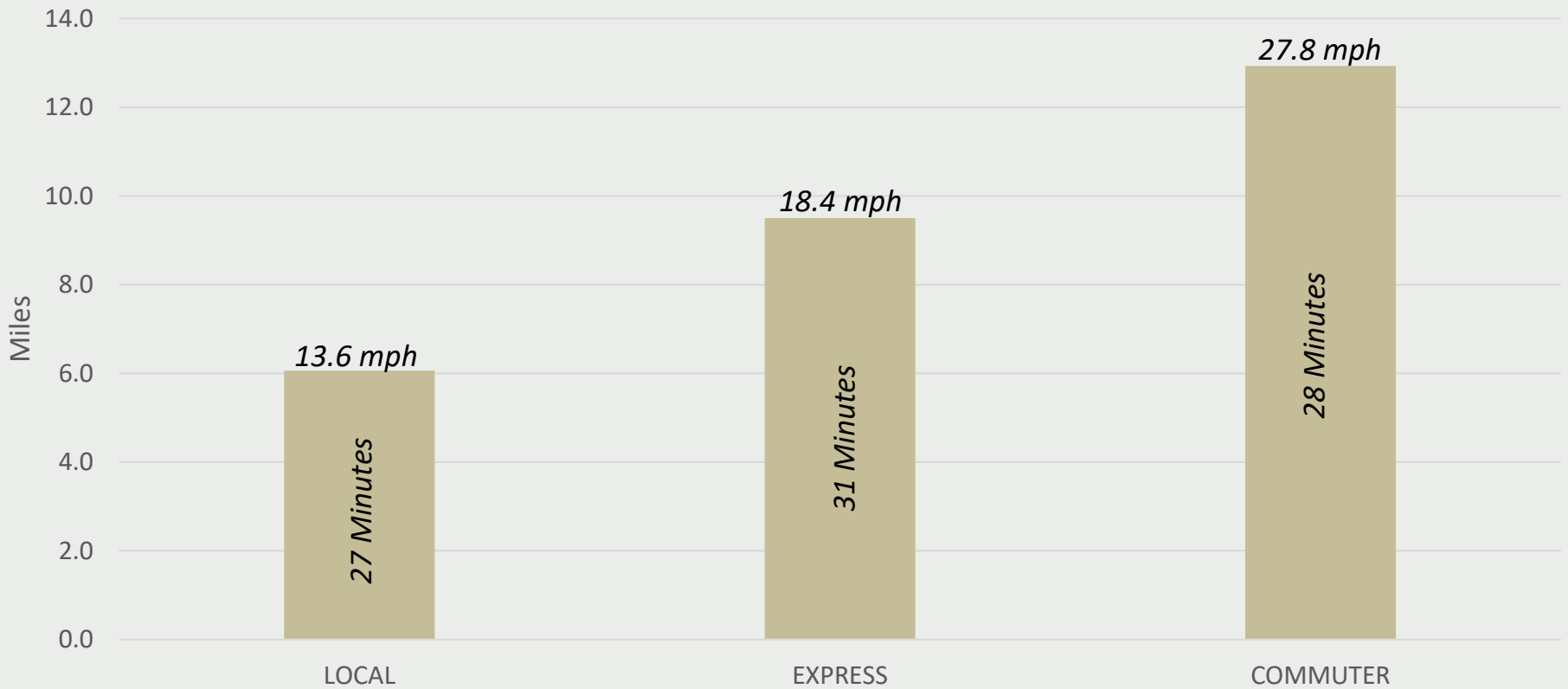
- Average Trip Lengths
- Bus Service Coverage
- Jobs Accessible by Bus



# Average Bus Trip Travel Time is Approximately 30 Minutes



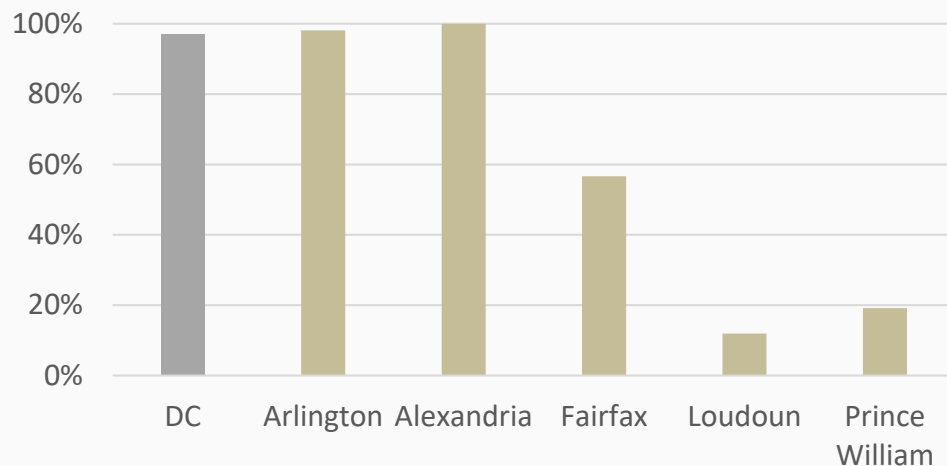
## Average Bus Trip Distance, Time & Speed



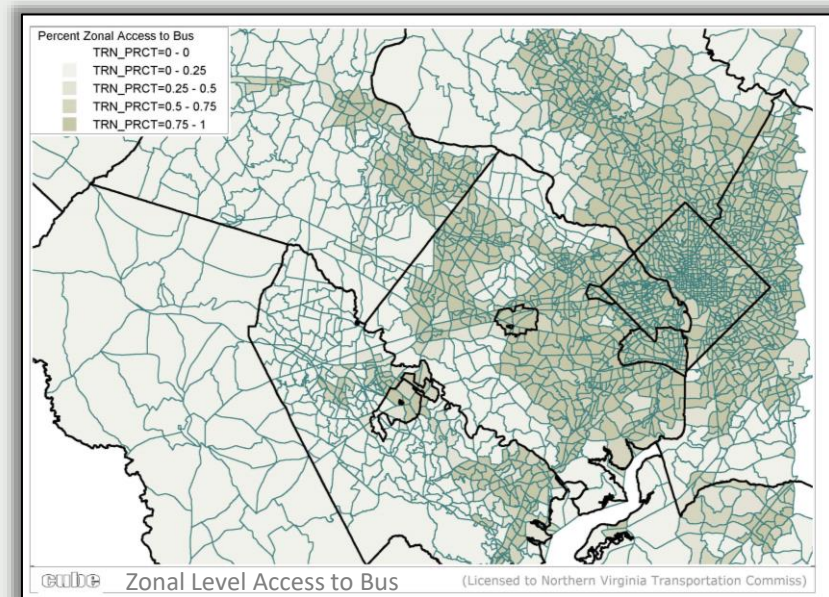
As would be expected commuter bus service has the longest average trip distance and the highest speed. The commuter bus speed is close to national averages for commuter rail. The express bus services, which operates on arterials and freeways have travel speeds similar to premium BRT and LRT modes. Regional the local bus service has average trip length around six miles. This data is a combination of all of the operators in Northern Virginia.

# Access to Bus Service Reflects Land Use Densities

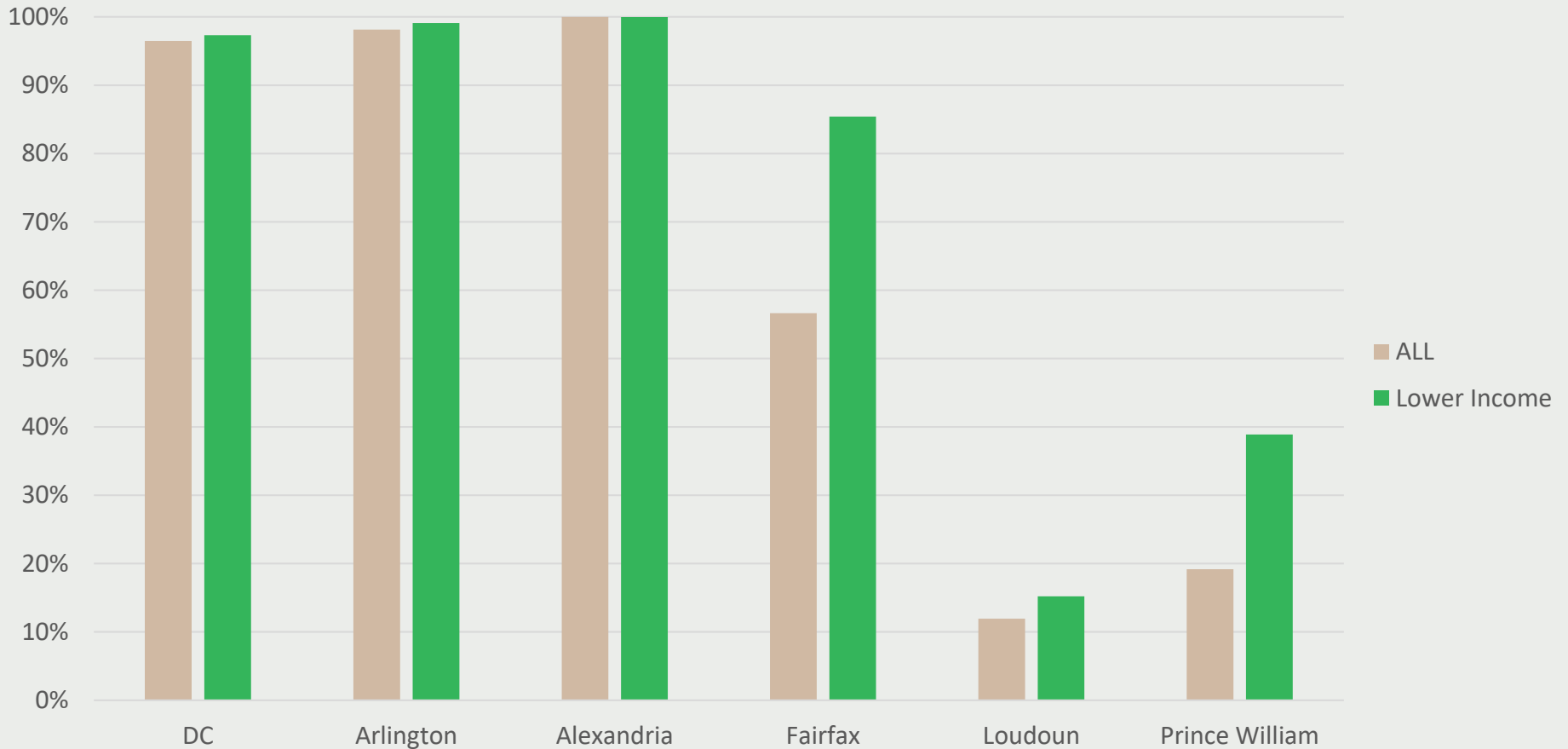
## Percent of Jurisdiction with Access to Bus Service



Arlington and Alexandria provide a high level of bus coverage, equal to DC. Coverage in Fairfax, Loudoun, and Prince William Counties, reflect their lower land use densities.



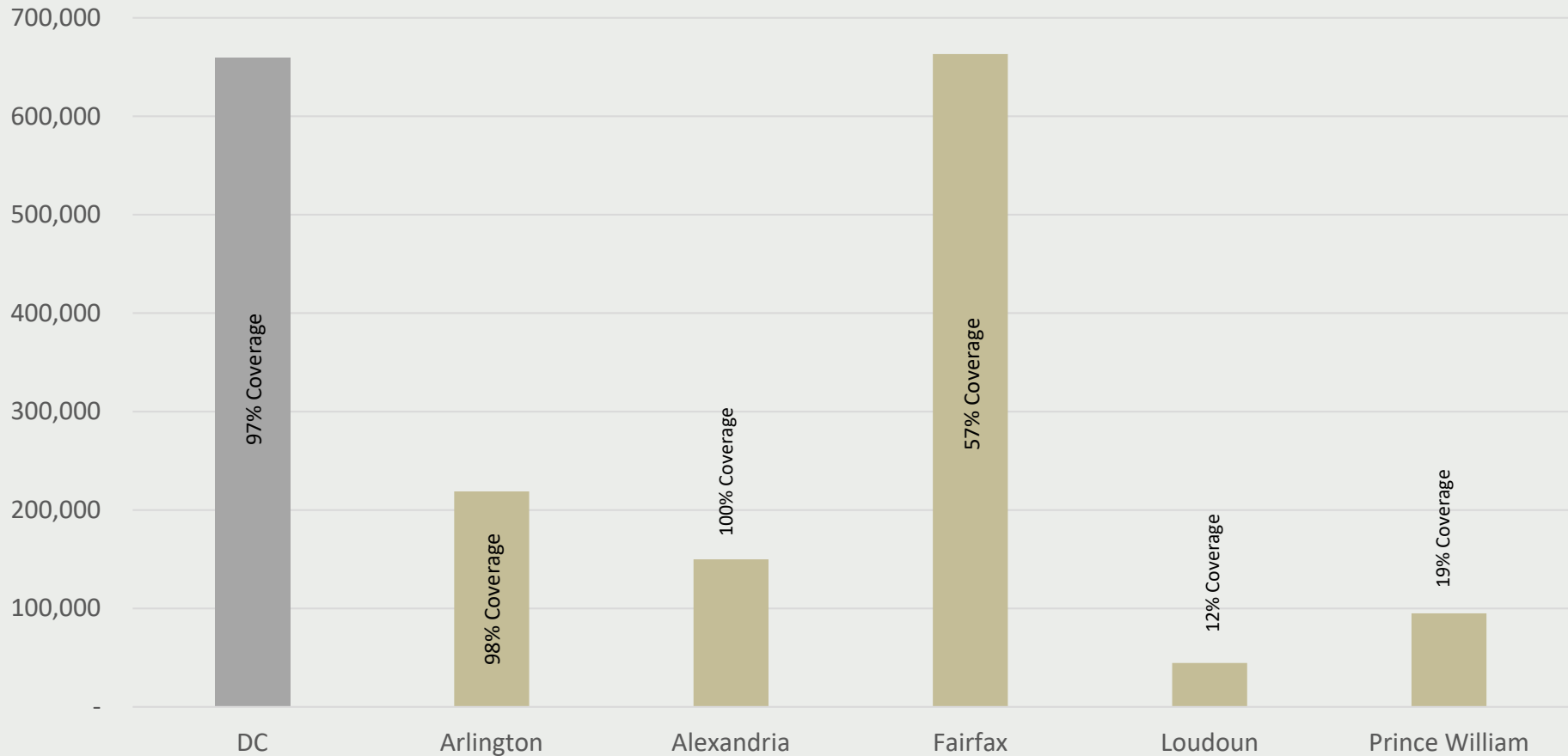
# Lower Income Areas are Served Well by Bus



All of the jurisdictions in Northern Virginia have higher or equal transit bus access for the lower income areas compared to total areas covered by buses within the jurisdictions. Although there are areas where improved transit service could provide greater access, overall lower income areas are served well by bus. (Lower income is below the median household income.)

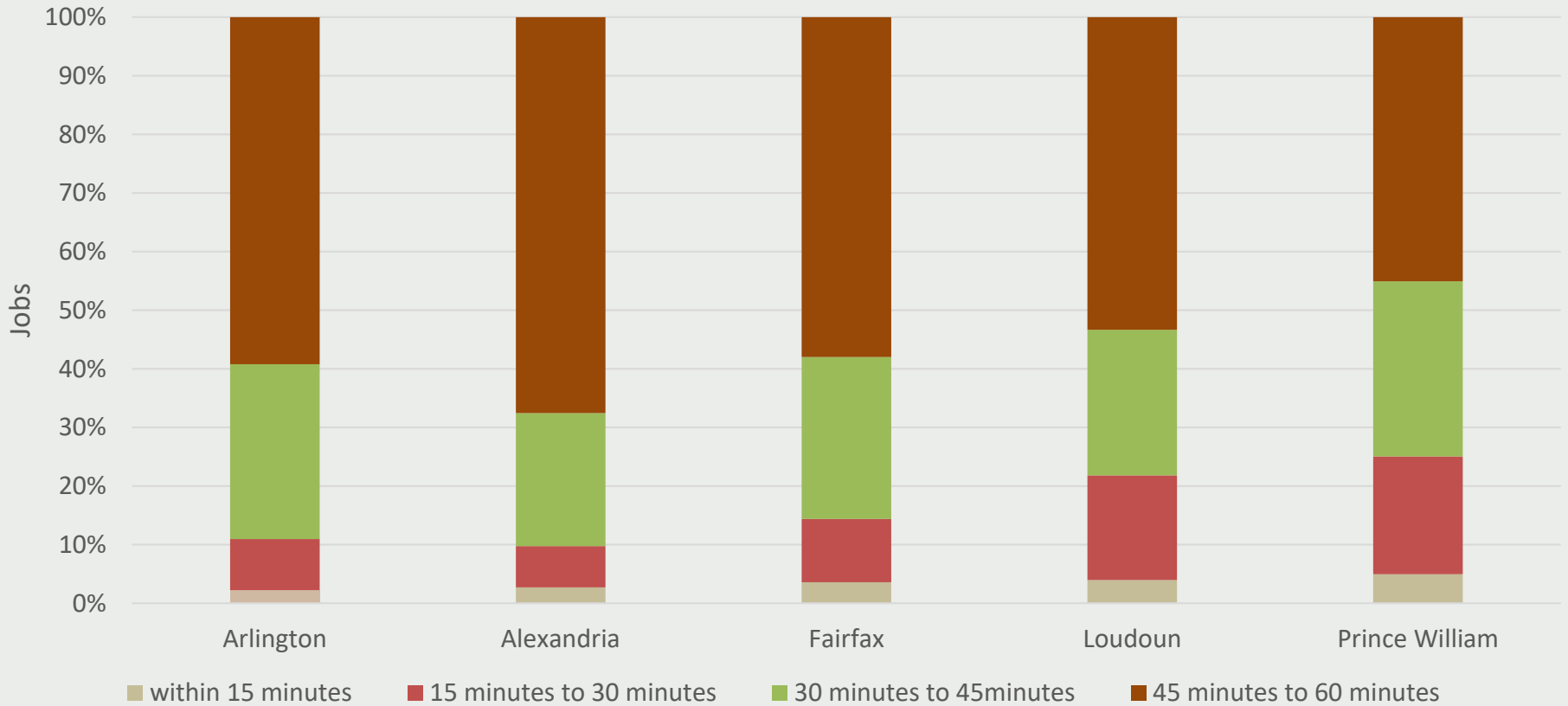


# Fairfax County Serves An Equal Number of Residents with Bus as DC



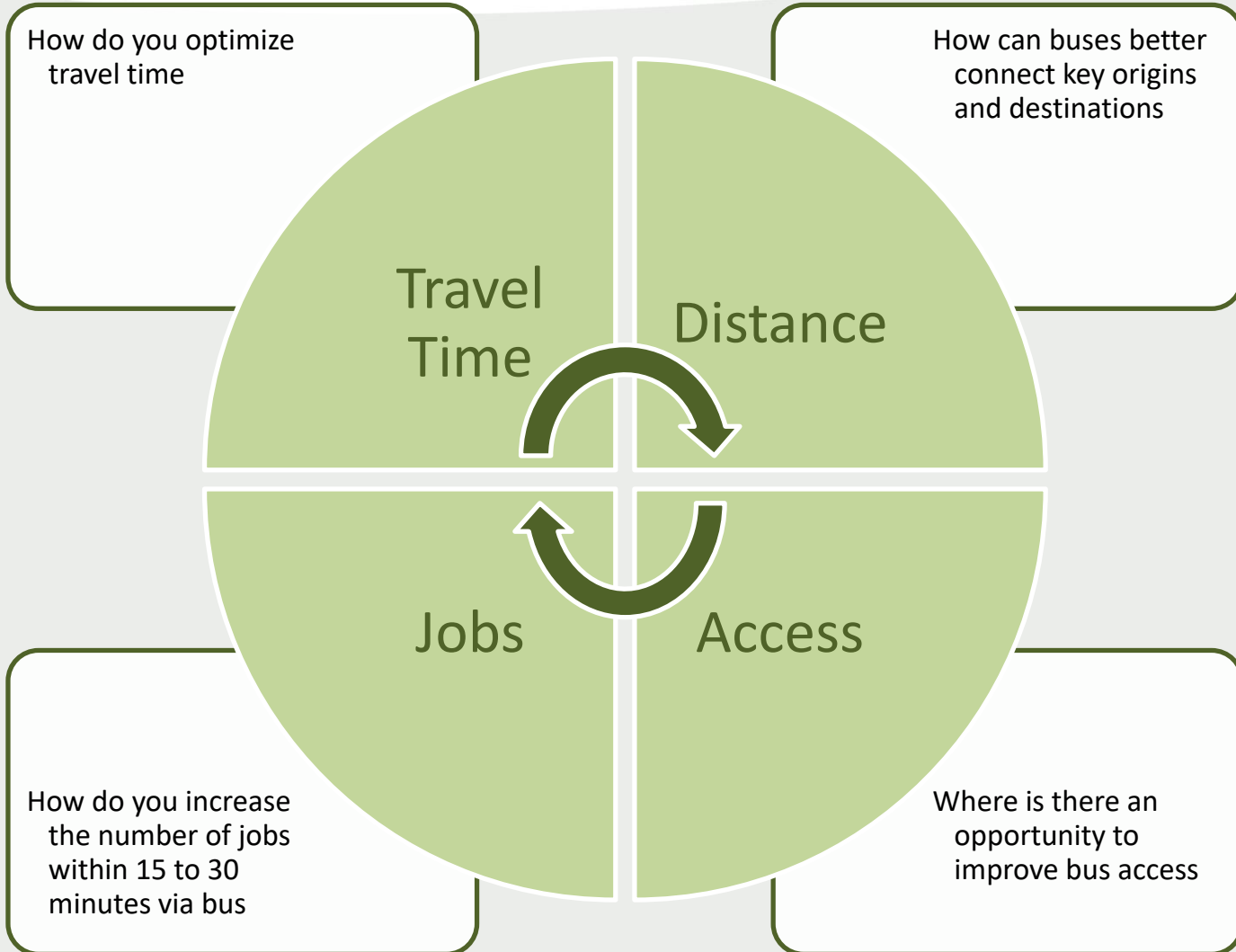
Although Fairfax County only has approximately 60 percent of the County within a half mile of bus service, the same number of people have access to bus services as compared to DC.

# Approximately 90 Percent of Jobs Accessible by Bus are within 30 to 60 Minutes



Bus provides access to many jobs in Northern Virginia. Approximately 90 percent of the jobs within a 60 minute bus ride are within 30 to 60 minutes.

# Opportunity Analysis



# Next Steps

- Coordinating with MAC
- Developing Recommendations
- Reporting in Summer