

FY 2014 TRANSIT PERFORMANCE UPDATE

List of Figures

Figure	Title
1	Public Transit Systems Operating in Northern Virginia - Operating Statistics and Performance Indicators, FY2014
2	Northern Virginia Average Weekday and Annual Public Transit Passenger Trips, FY2013-2014
3	FY2013-2014 Metrorail Ridership Summary, Average Daily Passenger Trips by Station
3A	FY2013-2014 Metrorail Ridership Summary, Average Daily Passenger Trips by Station (Weekday)
3B	FY2013-2014 Metrorail Ridership Summary, Average Daily Passenger Trips by Station (Saturday)
3C	FY2013-2014 Metrorail Ridership Summary, Average Daily Passenger Trips by Station (Sunday)
4	FY2013-2014 Metrorail Ridership Summary, Annual Passenger Trips by Station
4A	FY2013-2014 Metrorail Ridership Summary, Annual Passenger Trips by Station (Weekday)
4B	FY2013-2014 Metrorail Ridership Summary, Annual Passenger Trips by Station (Saturday)
4C	FY2013-2014 Metrorail Ridership Summary, Annual Passenger Trips by Station (Sunday)
5	Metrorail Monthly Northern Virginia Passenger Trips, FY2013-2014
6	Metrorail Annual Northern Virginia Passenger Trips, FY2000-2014
7	VRE Monthly Passenger Trips, FY2013-2014
8	VRE Annual Passenger Trips, FY2000-2014
9	Northern Virginia Metrobus Average Daily Passenger Trips, FY2013-2014
10	Northern Virginia Metrobus Annual Passenger Trips, FY2013-2014
11	Metrobus Northern Virginia Passenger Trips, Monthly Totals, FY2013-2014
12	Metrobus Northern Virginia Annual Passenger Trips, FY2000-2014
13	ART Annual Passenger Trips, FY2000-2014
14	CUE Annual Passenger Trips, FY2000-2014
15	DASH Annual Passenger Trips, FY2000-2014
16	Fairfax Connector Annual Passenger Trips, FY2000-2014
17	Loudoun County Transit Annual Passenger Trips, FY2000-2014
18	PRTC Omni Ride / Omni Link (Combined) Annual Passenger Trips, FY2000-2014

**Figure 1: Public Transit Systems Operating in Northern Virginia
Operating Statistics and Performance Indicators, FY 2014**

	Fairfax Connector	Potomac and Rappahannock Transportation Commission	Virginia Railway Express (VRE)	Alexandria DASH **	City of Fairfax CUE	Arlington Transit (ART)	Loudoun County Transit		Washington Metropolitan Area Transit Authority	
		Omni Ride / Omni Link					Commuter Bus	Local Fixed Route Bus	Metrobus (Northern Virginia)	Metrorail (Northern Virginia)
Unlinked Passenger Trips (UPT)	10,655,021	3,174,804	4,431,671	4,238,784	826,747	2,837,023	1,402,239	354,709	21,379,404	103,601,441
Vehicle Revenue Miles (VRM)	9,993,953	3,292,469	2,090,084	1,530,544	443,650	1,092,224	1,731,545	682,321	10,416,177	28,474,412
Vehicle Revenue Hours (VRH)	639,987	162,879	66,704	179,684	33,887	109,343	50,567	41,977	909,310	1,161,199
Passenger Miles Traveled (PMT)	80,209,004	58,500,516	132,623,590	9,537,264	3,058,964	5,759,154	46,708,581	3,013,904	67,713,396	584,143,633
Fleet Size (Vehicles Available for Annual Maximum Service)	272	154	112	79	8	53	71	25	1493*	1124*
Average Fleet Age (years)	4.8	7.5	14	8.4	9.0	4.36	7.48	3	7.5*	23.9*
Average Weekday Unlinked Trips	37,048	12,184	18,334	14,237	2,943	10,142	5,776	1,812	74,038	312,552
Average Trip Length (miles)	9.77	18.40	29.20	2.25	3.70	2.03	33.31	N/A	3.14*	5.64*
On Time Performance	96.77%	N/A	93.0%	91.6%	87.4%	97.25%	95.0%	95.0%	78.2%*	91.5%*
Operating Costs	\$76,305,161	\$31,217,978	\$87,621,311	\$14,585,357	\$3,445,054	\$6,771,829	\$10,377,924	\$2,283,271	136,508,337	\$298,866,490

Source: Information obtained directly from individual transit systems, as reported to NTD in unaudited annual reports.

* WMATA systemwide data.

Figure 2: Northern Virginia Average Weekday and Annual Public Transit Passenger Trips, FY 2012 - 2013

System	Average Weekday Passenger Trips, FY 2013	Average Weekday Passenger Trips, FY 2014	Annual Passenger Trips, FY 2013	Annual Passenger Trips, FY 2014
Metrorail Virginia	326,761	312,552	107,323,104	103,601,441
Metrobus Virginia	73,032	74,038	21,238,430	21,379,404
Fairfax Connector	37,614	37,048	10,650,401	10,655,021
VRE	18,878	18,334	4,550,062	4,431,671
DASH	14,507	14,237	4,265,417	4,238,784
PRTC Omni Ride /				
Omni Link	13,307	12,184	3,287,153	3,174,804
CUE	3,074	2,943	850,809	826,747
ART	9,426	10,142	2,644,933	2,837,023
Loudoun County Transit	5,479	7,588	1,325,176	1,756,948
Total	502,078	489,065	156,135,485	152,901,843

Note: Ridership on WMATA reimbursable services such as REX, PikeRide, and TAGS is included in the Metrobus Virginia ridership figure.

**Figure 3: FY 2013-FY2014 Metrorail Ridership Summary
Average Daily Passenger Trips by Station**

Station	Weekday FY 2013	Saturday FY 2013	Sunday FY 2013	Weekday FY 2014	Saturday FY 2014	Sunday FY 2014
Stations in Alexandria*						
Blue/Yellow Line Stations						
Braddock Road	8,606	3,469	2,254	8,694	3,645	2,363
Van Dorn Street	6,820	3,064	1,927	6,476	3,189	2,105
Eisenhower Avenue	3,883	2,382	1,460	3,620	2,397	1,347
King Street	17,627	9,610	6,475	17,131	9,787	6,668
Total Alexandria:	36,937	18,526	12,115	35,921	19,018	12,483
Stations in Arlington						
Orange Line Stations						
East Falls Church	8,241	5,231	3,052	7,785	4,081	2,452
Ballston	23,239	10,327	6,138	22,511	10,378	5,963
Virginia Square	7,495	2,814	1,678	7,341	3,024	1,818
Clarendon	9,558	5,882	2,910	8,989	5,917	2,944
Courthouse	15,049	6,412	3,755	14,799	6,501	3,875
Rosslyn	31,123	12,540	8,795	30,065	12,887	9,610
Blue/Yellow Line Stations						
Arlington Cemetery	2,649	4,170	3,662	2,523	4,252	3,726
Pentagon	32,579	4,841	3,009	30,766	4,854	3,015
Pentagon City	31,216	21,994	14,421	29,814	21,002	14,169
Crystal City	25,324	11,062	7,511	23,472	10,401	7,153
National Airport	12,283	8,111	11,726	11,925	8,102	11,755
Total Arlington:	198,757	93,383	66,657	189,990	91,400	66,481
Stations in Fairfax County*						
Orange Line Stations						
Vienna	26,372	9,556	5,313	24,970	10,985	6,118
Dunn Loring	9,919	3,783	2,146	10,022	4,505	2,584
West Falls Church	20,707	4,784	2,777	19,852	5,605	3,382
Blue/Yellow Line Stations						
Huntington	17,078	6,809	4,509	15,978	6,787	4,442
Franconia-Springfield	16,992	7,560	4,783	15,818	7,763	4,415
Total Fairfax:	91,068	32,492	19,528	86,640	35,645	20,941
Total Virginia:	326,761	144,401	98,301	312,552	146,063	99,905

*Van Dorn Street is paid for by Alexandria and Fairfax County on a 50/50 basis

**Figure 3A: FY 2013-2014 Metrorail Ridership Summary
Average Daily Passenger Trips by Station (Weekday)**

Station	Weekday FY 2013	Weekday FY 2014	Total Change FY 13-14	Percentage Change FY 13-14
Stations in Alexandria*				
Blue/Yellow Line Stations				
Braddock Road	8,606	8,694	88	1.0%
Van Dorn Street	6,820	6,476	-344	-5.0%
Eisenhower Avenue	3,883	3,620	-263	-6.8%
King Street	17,627	17,131	-496	-2.8%
Total Alexandria:	36,937	35,921	-1,015	-2.7%
Stations in Arlington				
Orange Line Stations				
East Falls Church	8,241	7,785	-457	-5.5%
Ballston	23,239	22,511	-728	-3.1%
Virginia Square	7,495	7,341	-154	-2.1%
Clarendon	9,558	8,989	-569	-6.0%
Courthouse	15,049	14,799	-250	-1.7%
Rosslyn	31,123	30,065	-1,058	-3.4%
Blue/Yellow Line Stations				
Arlington Cemetery	2,649	2,523	-125	-4.7%
Pentagon	32,579	30,766	-1,813	-5.6%
Pentagon City	31,216	29,814	-1,402	-4.5%
Crystal City	25,324	23,472	-1,852	-7.3%
National Airport	12,283	11,925	-358	-2.9%
Total Arlington:	198,757	189,990	-8,767	-4.4%
Stations in Fairfax County*				
Orange Line Stations				
Vienna	26,372	24,970	-1,402	-5.3%
Dunn Loring	9,919	10,022	103	1.0%
West Falls Church	20,707	19,852	-855	-4.1%
Blue/Yellow Line Stations				
Huntington	17,078	15,978	-1,100	-6.4%
Franconia-Springfield	16,992	15,818	-1,173	-6.9%
Total Fairfax:	91,068	86,640	-4,428	-4.9%
Total Virginia:	326,761	312,552	-14,210	-4.3%

*Van Dorn Street is paid for by Alexandria and Fairfax County on a 50/50 basis

**Figure 3B: FY 2013-2014 Metrorail Ridership Summary
Average Daily Passenger Trips by Station (Saturday)**

Station	Saturday FY 2013	Saturday FY 2014	Total Change FY 13-14	Percentage Change FY 13-14
Stations in Alexandria*				
Blue/Yellow Line Stations				
Braddock Road	3,469	3,645	176	5.1%
Van Dorn Street	3,064	3,189	124	4.1%
Eisenhower Avenue	2,382	2,397	14	0.6%
King Street	9,610	9,787	178	1.9%
Total Alexandria:	18,526	19,018	492	2.7%
Stations in Arlington				
Orange Line Stations				
East Falls Church	5,231	4,081	-1,149	-22.0%
Ballston	10,327	10,378	51	0.5%
Virginia Square	2,814	3,024	210	7.5%
Clarendon	5,882	5,917	35	0.6%
Courthouse	6,412	6,501	89	1.4%
Rosslyn	12,540	12,887	347	2.8%
Blue/Yellow Line Stations				
Arlington Cemetery	4,170	4,252	82	2.0%
Pentagon	4,841	4,854	14	0.3%
Pentagon City	21,994	21,002	-992	-4.5%
Crystal City	11,062	10,401	-661	-6.0%
National Airport	8,111	8,102	-9	-0.1%
Total Arlington:	93,383	91,400	-1,984	-2.1%
Stations in Fairfax County*				
Orange Line Stations				
Vienna	9,556	10,985	1,430	15.0%
Dunn Loring	3,783	4,505	722	19.1%
West Falls Church	4,784	5,605	821	17.2%
Blue/Yellow Line Stations				
Huntington	6,809	6,787	-22	-0.3%
Franconia-Springfield	7,560	7,763	203	2.7%
Total Fairfax:	32,492	35,645	3,153	9.7%
Total Virginia:	144,401	146,063	1,662	1.2%

*Van Dorn Street is paid for by Alexandria and Fairfax County on a 50/50 basis

**Figure 3C: FY 2013-2014 Metrorail Ridership Summary
Average Daily Passenger Trips by Station (Sunday)**

Station	Sunday FY 2013	Sunday FY 2014	Total Change FY 13-14	Percentage Change FY 13-14
Stations in Alexandria*				
Blue/Yellow Line Stations				
Braddock Road	2,254	2,363	110	4.9%
Van Dorn Street	1,927	2,105	179	9.3%
Eisenhower Avenue	1,460	1,347	-113	-7.7%
King Street	6,475	6,668	192	3.0%
Total Alexandria:	12,115	12,483	368	3.0%
Stations in Arlington				
Orange Line Stations				
East Falls Church	3,052	2,452	-600	-19.7%
Ballston	6,138	5,963	-175	-2.9%
Virginia Square	1,678	1,818	140	8.3%
Clarendon	2,910	2,944	35	1.2%
Courthouse	3,755	3,875	120	3.2%
Rosslyn	8,795	9,610	815	9.3%
Blue/Yellow Line Stations				
Arlington Cemetery	3,662	3,726	64	1.8%
Pentagon	3,009	3,015	6	0.2%
Pentagon City	14,421	14,169	-252	-1.7%
Crystal City	7,511	7,153	-359	-4.8%
National Airport	11,726	11,755	30	0.3%
Total Arlington:	66,657	66,481	-176	-0.3%
Stations in Fairfax County*				
Orange Line Stations				
Vienna	5,313	6,118	805	15.1%
Dunn Loring	2,146	2,584	439	20.4%
West Falls Church	2,777	3,382	605	21.8%
Blue/Yellow Line Stations				
Huntington	4,509	4,442	-67	-1.5%
Franconia-Springfield	4,783	4,415	-369	-7.7%
Total Fairfax:	19,528	20,941	1,413	7.2%
Total Virginia:	98,301	99,905	1,604	1.6%

*Van Dorn Street is paid for by Alexandria and Fairfax County on a 50/50 basis

**Figure 4: FY 2013-2014 Metrorail Ridership Summary
Annual Passenger Trips by Station**

Station	Weekday FY 2013	Saturday FY 2013	Sunday FY 2013	Weekday FY 2014	Saturday FY 2014	Sunday FY 2014
Stations in Alexandria*						
Blue/Yellow Line Stations						
Braddock Road	2,237,148	179,971	113,880	2,268,645	189,534	122,116
Van Dorn Street	1,773,552	159,370	97,343	1,690,949	166,880	107,812
Eisenhower Avenue	1,010,139	122,972	74,665	945,835	124,039	69,382
King Street	4,582,439	499,964	328,343	4,473,946	509,786	344,992
Total Alexandria:	9,603,279	962,276	614,231	9,379,375	990,238	644,303
Stations in Arlington						
Orange Line Stations						
East Falls Church	2,143,079	272,742	154,384	2,031,850	212,356	126,527
Ballston	6,040,274	534,544	308,448	5,874,093	536,559	308,126
Virginia Square	1,947,480	147,052	85,304	1,915,953	156,928	93,907
Clarendon	2,484,083	306,619	147,132	2,346,776	308,136	152,208
Courthouse	3,911,813	334,043	189,702	3,862,622	337,916	199,605
Rosslyn	8,092,084	651,212	443,681	7,847,608	669,108	492,890
Blue/Yellow Line Stations						
Arlington Cemetery	690,697	217,641	184,966	661,676	221,209	190,557
Pentagon	8,468,948	250,370	151,757	8,029,334	251,863	154,629
Pentagon City	8,116,862	1,142,593	733,621	7,783,914	1,090,504	733,027
Crystal City	6,583,327	573,680	380,018	6,127,479	540,041	367,090
National Airport	3,197,651	418,652	593,754	3,112,764	422,988	610,727
Total Arlington:	51,676,299	4,849,148	3,372,766	49,594,069	4,747,609	3,429,293
Stations in Fairfax County*						
Orange Line Stations						
Vienna	6,856,756	499,752	272,528	6,518,186	571,364	315,374
Dunn Loring	2,578,785	197,813	110,325	2,615,047	234,537	133,476
West Falls Church	5,383,206	250,040	143,127	5,181,687	291,188	174,820
Blue/Yellow Line Stations						
Huntington	4,441,261	353,344	228,940	4,171,052	352,756	229,784
Franconia-Springfield	4,420,591	392,720	240,663	4,131,338	401,137	228,005
Total Fairfax:	23,680,598	1,693,668	995,585	22,617,310	1,850,981	1,081,460
TOTAL VIRGINIA:	84,960,176	7,505,092	4,982,582	81,590,755	7,588,829	5,155,057

*Van Dorn Street is paid for by Alexandria and Fairfax County on a 50/50 basis

**Figure 4A: FY 2013-2014 Metrorail Ridership Summary
Annual Passenger Trips by Station (Weekday)**

Station	Weekday FY 2013	Weekday FY 2014	Total Change FY 13-14	Percentage Change FY 13-14
Stations in Alexandria*				
Blue/Yellow Line Stations				
Braddock Road	2,237,148	2,268,645	31,497	1.4%
Van Dorn Street	1,773,552	1,690,949	-82,603	-4.7%
Eisenhower Avenue	1,010,139	945,835	-64,305	-6.4%
King Street	4,582,439	4,473,946	-108,492	-2.4%
Total Alexandria:	9,603,279	9,379,375	-223,903	-2.3%
Stations in Arlington				
Orange Line Stations				
East Falls Church	2,143,079	2,031,850	-111,229	-5.2%
Ballston	6,040,274	5,874,093	-166,181	-2.8%
Virginia Square	1,947,480	1,915,953	-31,528	-1.6%
Clarendon	2,484,083	2,346,776	-137,306	-5.5%
Courthouse	3,911,813	3,862,622	-49,191	-1.3%
Rosslyn	8,092,084	7,847,608	-244,476	-3.0%
Blue/Yellow Line Stations				
Arlington Cemetery	690,697	661,676	-29,021	-4.2%
Pentagon	8,468,948	8,029,334	-439,614	-5.2%
Pentagon City	8,116,862	7,783,914	-332,949	-4.1%
Crystal City	6,583,327	6,127,479	-455,848	-6.9%
National Airport	3,197,651	3,112,764	-84,888	-2.7%
Total Arlington:	51,676,299	49,594,069	-2,082,230	-4.0%
Stations in Fairfax County*				
Orange Line Stations				
Vienna	6,856,756	6,518,186	-338,569	-4.9%
Dunn Loring	2,578,785	2,615,047	36,262	1.4%
West Falls Church	5,383,206	5,181,687	-201,519	-3.7%
Blue/Yellow Line Stations				
Huntington	4,441,261	4,171,052	-270,208	-6.1%
Franconia-Springfield	4,420,591	4,131,338	-289,253	-6.5%
Total Fairfax:	23,680,598	22,617,310	-1,063,288	-4.5%
Total Virginia:	84,960,176	81,590,755	-3,369,421	-4.0%

*Van Dorn Street is paid for by Alexandria and Fairfax County on a 50/50 basis

**Figure 4B: FY 2013-2014 Metrorail Ridership Summary
Annual Passenger Trips by Station (Saturday)**

Station	Saturday FY 2013	Saturday FY 2014	Total Change FY 13-14	Percentage Change FY 13-14
Stations in Alexandria*				
Blue/Yellow Line Stations				
Braddock Road	179,971	189,534	9,563	5.3%
Van Dorn Street	159,370	166,880	7,510	4.7%
Eisenhower Avenue	122,972	124,039	1,067	0.9%
King Street	499,964	509,786	9,822	2.0%
Total Alexandria:	962,276	990,238	27,962	2.9%
Stations in Arlington				
Orange Line Stations				
East Falls Church	272,742	212,356	-60,386	-22.1%
Ballston	534,544	536,559	2,015	0.4%
Virginia Square	147,052	156,928	9,876	6.7%
Clarendon	306,619	308,136	1,518	0.5%
Courthouse	334,043	337,916	3,873	1.2%
Rosslyn	651,212	669,108	17,896	2.7%
Blue/Yellow Line Stations				
Arlington Cemetery	217,641	221,209	3,569	1.6%
Pentagon	250,370	251,863	1,493	0.6%
Pentagon City	1,142,593	1,090,504	-52,089	-4.6%
Crystal City	573,680	540,041	-33,639	-5.9%
National Airport	418,652	422,988	4,336	1.0%
Total Arlington:	4,849,148	4,747,609	-101,539	-2.1%
Stations in Fairfax County*				
Orange Line Stations				
Vienna	499,752	571,364	71,612	14.3%
Dunn Loring	197,813	234,537	36,724	18.6%
West Falls Church	250,040	291,188	41,148	16.5%
Blue/Yellow Line Stations				
Huntington	353,344	352,756	-589	-0.2%
Franconia-Springfield	392,720	401,137	8,418	2.1%
Total Fairfax:	1,693,668	1,850,981	157,313	9.3%
Total Virginia:	7,505,092	7,588,829	83,737	1.1%

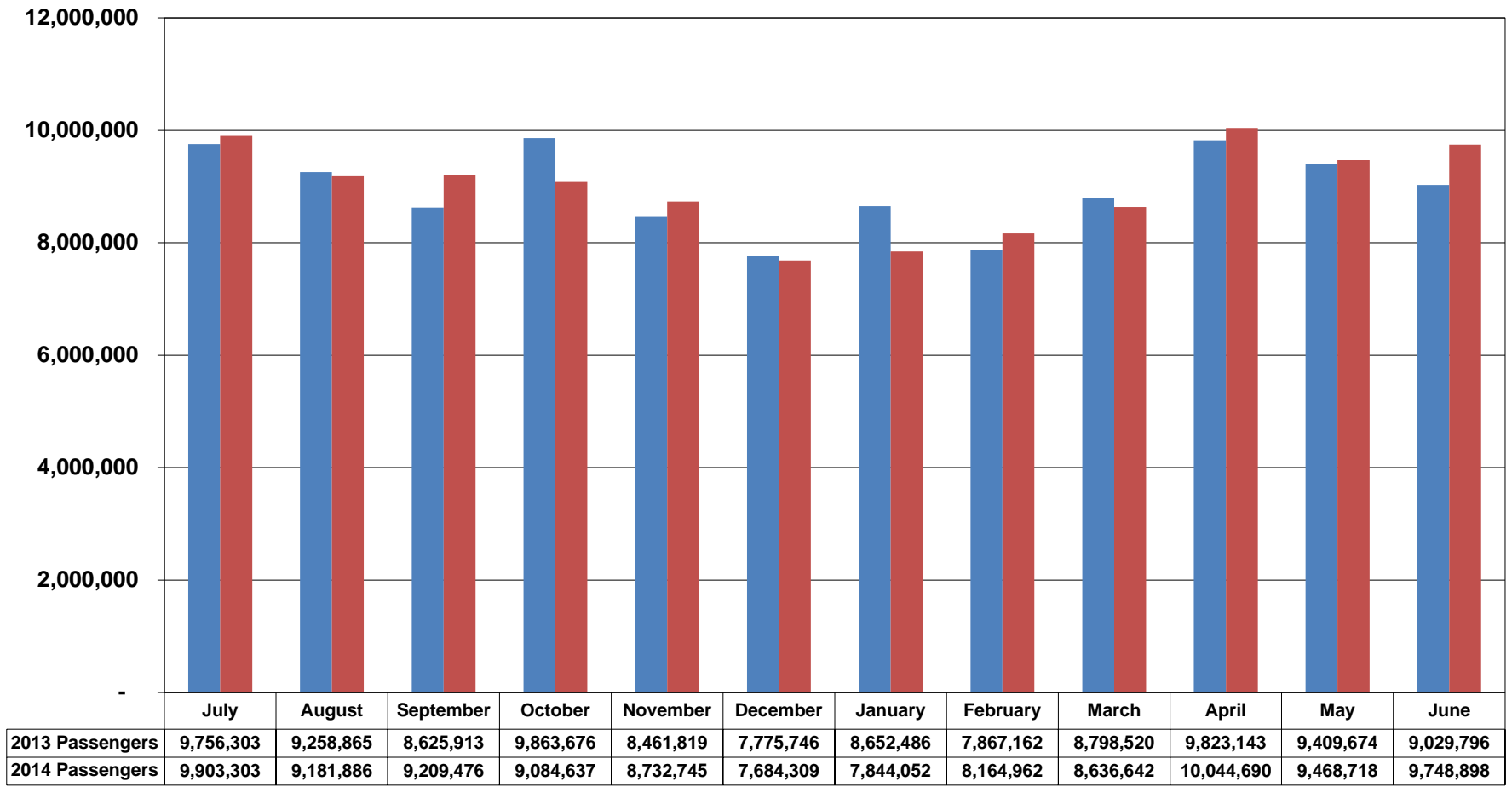
*Van Dorn Street is paid for by Alexandria and Fairfax County on a 50/50 basis

**Figure 4C: FY 2013-2014 Metrorail Ridership Summary
Annual Passenger Trips by Station (Sunday)**

Station	Sunday FY 2013	Sunday FY 2014	Total Change FY 13-14	Percentage Change FY 13-14
Stations in Alexandria*				
Blue/Yellow Line Stations				
Braddock Road	113,880	122,116	8,237	7.2%
Van Dorn Street	97,343	107,812	10,469	10.8%
Eisenhower Avenue	74,665	69,382	-5,282	-7.1%
King Street	328,343	344,992	16,649	5.1%
Total Alexandria:	614,231	644,303	30,073	4.9%
Stations in Arlington				
Orange Line Stations				
East Falls Church	154,384	126,527	-27,857	-18.0%
Ballston	308,448	308,126	-321	-0.1%
Virginia Square	85,304	93,907	8,603	10.1%
Clarendon	147,132	152,208	5,076	3.4%
Courthouse	189,702	199,605	9,904	5.2%
Rosslyn	443,681	492,890	49,209	11.1%
Blue/Yellow Line Stations				
Arlington Cemetery	184,966	190,557	5,591	3.0%
Pentagon	151,757	154,629	2,872	1.9%
Pentagon City	733,621	733,027	-595	-0.1%
Crystal City	380,018	367,090	-12,928	-3.4%
National Airport	593,754	610,727	16,973	2.9%
Total Arlington:	3,372,766	3,429,293	56,527	1.7%
Stations in Fairfax County*				
Orange Line Stations				
Vienna	272,528	315,374	42,846	15.7%
Dunn Loring	110,325	133,476	23,151	21.0%
West Falls Church	143,127	174,820	31,692	22.1%
Blue/Yellow Line Stations				
Huntington	228,940	229,784	844	0.4%
Franconia-Springfield	240,663	228,005	-12,658	-5.3%
Total Fairfax:	995,585	1,081,460	85,875	8.6%
Total Virginia:	4,982,582	5,155,057	172,475	3.5%

*Van Dorn Street is paid for by Alexandria and Fairfax County on a 50/50 basis

Figure 5: Metrorail Monthly Northern Virginia Passenger Trips, FY 2013 - FY2014



■ 2013 Passengers ■ 2014 Passengers

Figure 6: Metrorail Annual Northern Virginia Passenger Trips, FY 2000 - 2014

Note: NVTC formula for estimating NoVa share of Virginia Metrorail ridership revised in FY13.

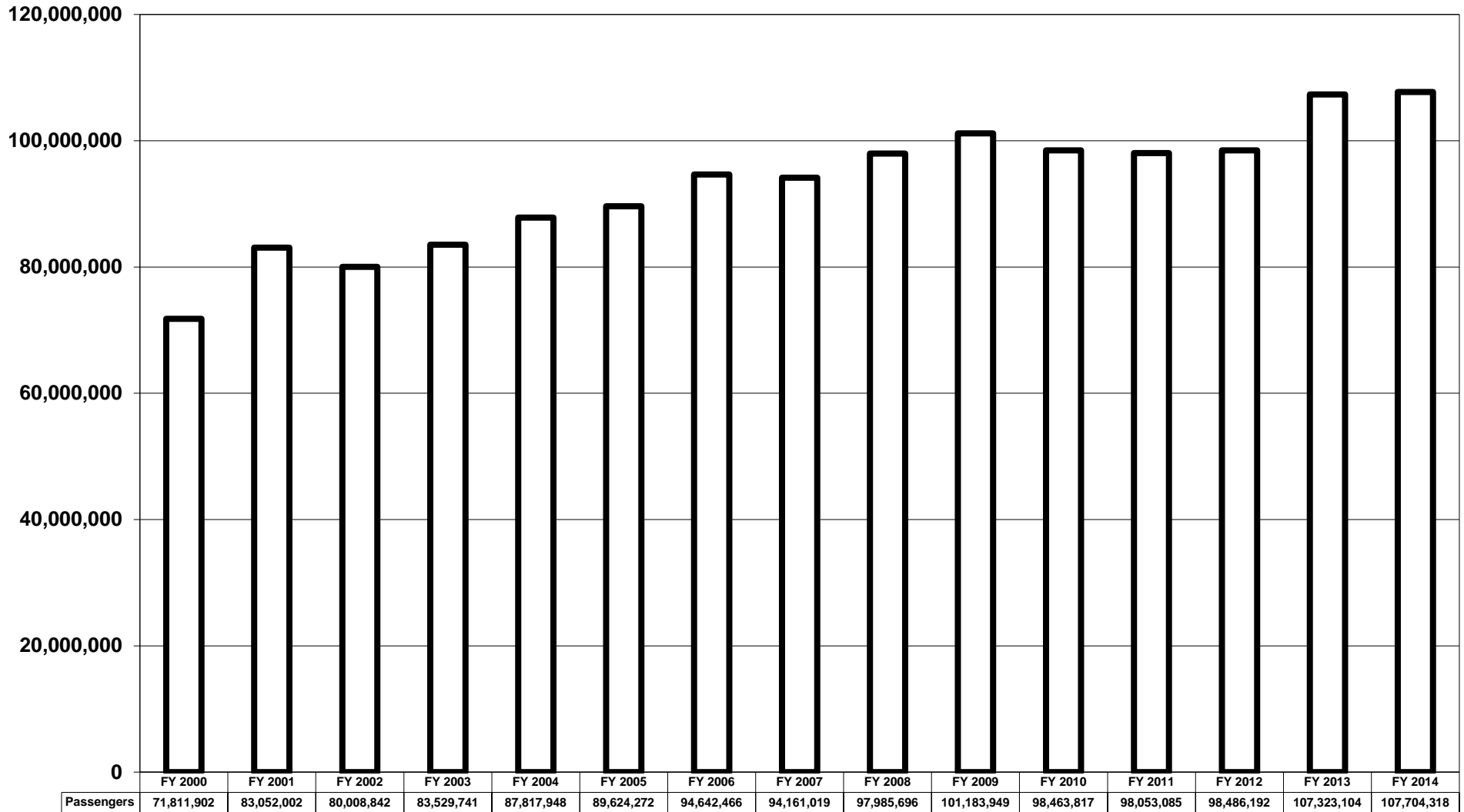
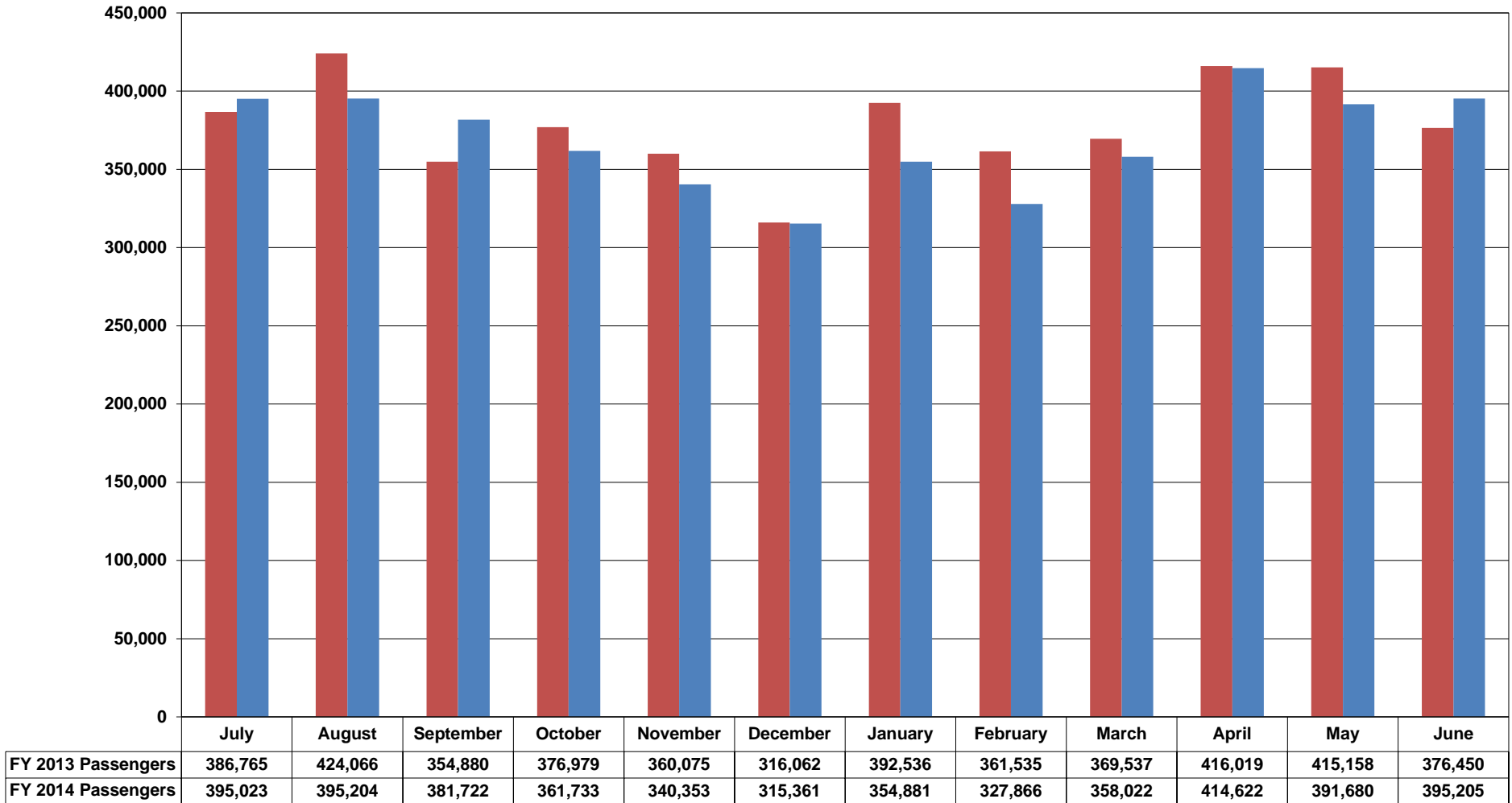


Figure 7: VRE Monthly Passenger Trips, FY 2013 - 2014



■ FY 2013 Passengers ■ FY 2014 Passengers

Figure 8: VRE Annual Passenger Trips, FY 2000 - FY 2014

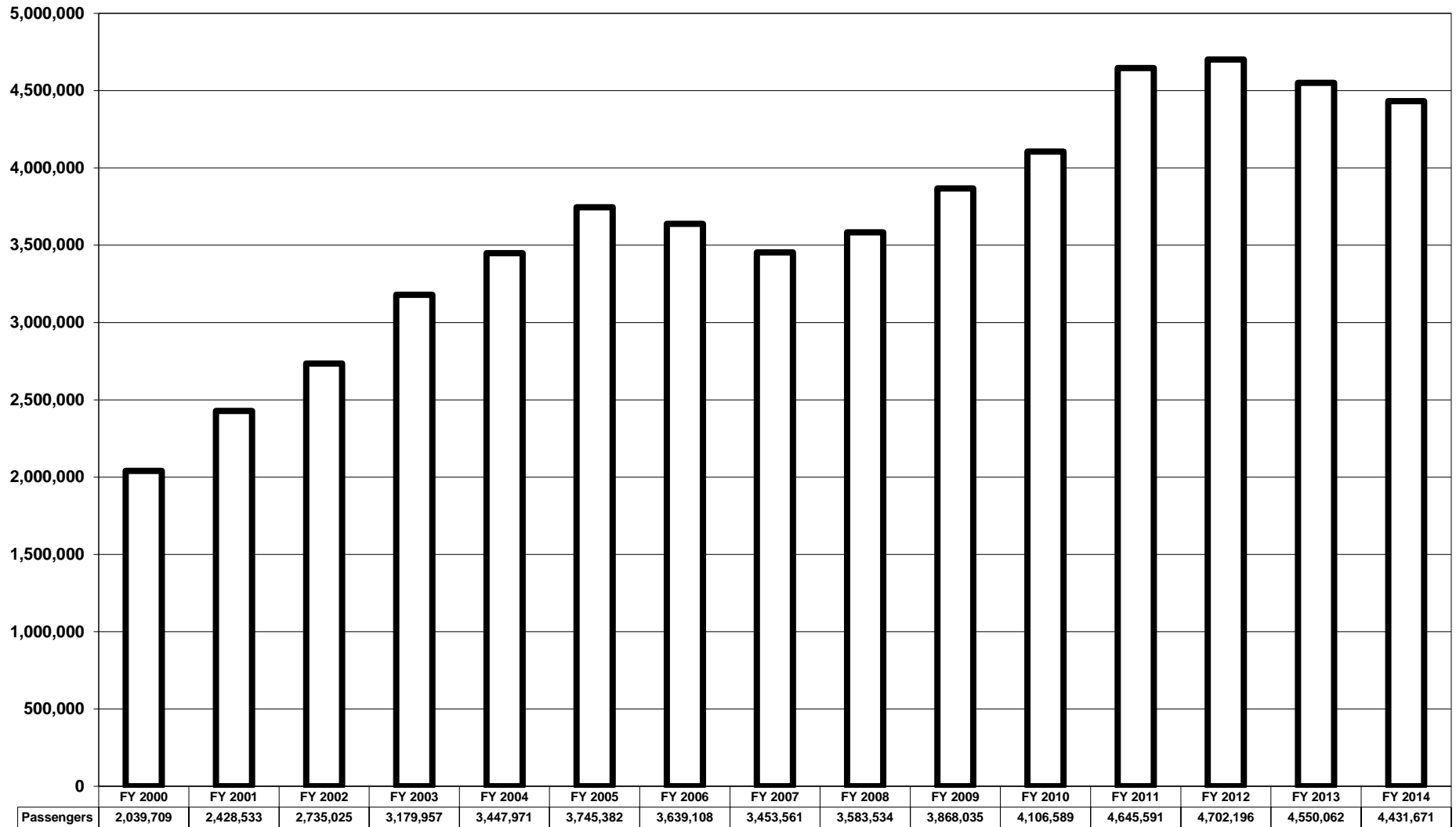


Figure 9: Northern Virginia Metrobus Average Daily Passenger Trips, FY 2013 - FY 2014						
	Weekday FY 13	Saturday FY 13	Sunday FY 13	Weekday FY 14	Saturday FY 14	Sunday FY 14
Ballston Terminal Services						
1A,B,C, E,F,Z	4,501	2,825	1,785	4,596	2,970	2,039
2A,B,C,G	3,399	1,894	689	3,808	1,859	677
10B	2,317	1,609	914	2,454	1,711	1,085
22A,B	1,338	505		1,494	491	
23A,C	3,775	2,408	1,424	3,941	2,495	1,506
25A,C,D,E (also serve Pentagon Terminal)	1,346	353	373	1,346	385	364
25B	1,314	551		1,286	610	
38B	3,718	2,206	1,597	3,785	2,323	1,701
Subtotal	21,707	12,352	6,783	22,709	12,845	7,373
Rosslyn Terminal Services						
3A,B,E	2,474	1,011	493	2,349	1,019	528
4A,B,E,H	1,955	739	411	1,816	744	427
5A	1,219	795	765	1,252	793	796
Subtotal	5,648	2,544	1,668	5,416	2,556	1,751
Pentagon Terminal Services						
7A,B,C,E,F,H,P,W,X, Y	4,945	1,610	1,119	4,820	1,494	963
7M	1,802			1,623		
8S,W,X,Z	1,141			1,165		
9A,E	1,620	1,075	706	1,628	1,105	707
10A,E,R,S	2,343	1,298	810	2,228	1,293	789
13F,G		124	90		121	70
16A,B,D,E,J,P	5,858	4,202	2,871	5,852	4,381	2,997
16L	196			170		
16G,H,K	3,634	2,444	1,482	3,792	2,552	1,524
17 Series	1,580			1,515		
18 Series	1,640			1,621		
21A,D	534			574		
28F,G	513			535		
29C,E,G,H,X	1,088			1,098		
Subtotal	26,894	10,752	7,078	26,619	10,947	7,049
Other Terminal Services						
REX	3,402	2,138	885	3,395	2,203	891
11Y	482			457		
15K,L	452			434		
15M	172			217		
24T	173			155		
TAGS Shuttle	368			322		
28A,X	5,300	4,122	3,271	5,734	4,577	3,516
29K,N	2,338	1,119		2,225	1,192	
2T	785	474	254	667	493	252
3T	698	287		738	244	
3Y	428			444		
9S	1,133			1,070		
16X (was 16F)	939			924		
16Y	1,509			1,686		
26A				180		
28T	606			645		
Subtotal	18,783	8,141	4,411	19,294	8,710	4,659
Metrobus Total-Virginia*	73,032	33,789	19,940	74,038	35,058	20,832

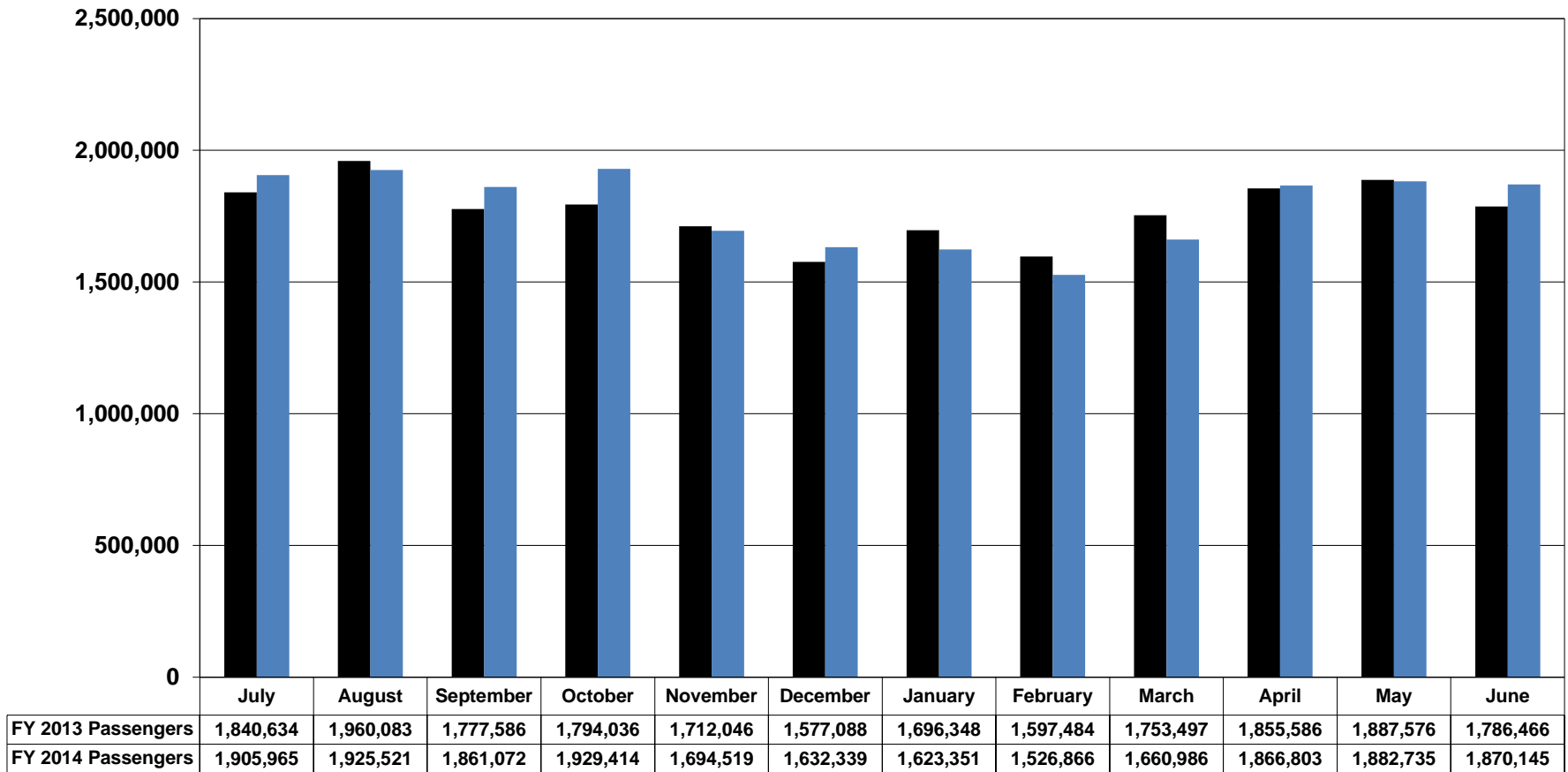
* Excludes Holidays

Figure 10: Northern Virginia Metrobus Annual Passenger Trips, FY 2013 - FY 2014

	Weekday FY 13	Saturday FY 13	Sunday FY 13	Weekday FY 14	Saturday FY 14	Sunday FY 14
Ballston Terminal Services						
1A,B,C, E,F,Z	1,120,660	158,201	103,530	1,135,197	169,262	116,241
2A,B,C,G	846,321	106,089	39,983	840,995	105,974	38,578
10B	576,925	90,102	53,027	606,066	97,541	61,869
22A,B	333,094	28,293		369,075	27,980	
23A,C	940,029	134,820	82,589	973,343	142,242	85,840
25A,C,D,E (also serve Pentagon Terminal)	335,095	19,757	21,644	332,424	21,957	20,750
25B	327,080	30,881		317,675	34,794	
38B	925,834	123,544	92,652	934,838	132,415	96,964
Subtotal	5,405,038	691,687	393,425	5,509,613	732,165	420,242
Rosslyn Terminal Services						
3A,B,E	616,060	56,598	28,569	580,088	58,058	30,099
4A,B,E,H	486,745	41,376	23,819	448,504	42,416	24,358
5A	303,518	44,516	44,366	309,147	45,206	45,369
Subtotal	1,406,323	142,490	96,754	1,337,739	145,680	99,826
Pentagon Terminal Services						
7A,B,C,E,F,H,P,W,X, Y	1,231,275	90,531	64,904	1,190,483	85,394	54,886
7M	448,783			400,876		
8S,W,X,Z	284,149			287,649		
9A,E	403,268	60,188	40,944	402,056	63,013	40,315
10A,E	583,370	72,688	46,974	550,340	73,718	44,950
13F,G		6,929	5,245		6,918	3,977
16A,B,D,E,J,P	1,458,634	235,292	166,499	1,445,367	249,725	170,828
16L	48,775			41,950		
16G,H,K	904,928	136,853	85,941	936,600	145,459	86,850
17 Series	393,367			374,143		
18 Series	408,302			400,301		
21A,D	132,997			141,703		
28F,G	127,803			132,050		
29C,E,G,H,X	271,023			271,256		
Subtotal	6,696,674	602,481	410,507	6,574,774	624,227	401,806
Other Terminal Services						
REX	847,153	119,731	51,351	838,582	125,594	50,796
11Y	120,126			112,853		
15K,L	112,588			107,197		
15M	42,767			53,620		
24T	42,967			38,295		
TAGS Shuttle	91,637			79,553		
28A,X	1,319,614	230,850	189,739	1,416,352	260,914	200,390
29K,N	582,072	62,687		549,642	67,968	
2T	195,346	26,553	14,739	164,735	28,086	14,366
3T	173,686	16,096		182,329	13,936	
3Y	106,466			109,629		
9S	282,142			264,252		
16X (was 16F)	233,769			228,347		
16Y	375,705			416,502		
26A				44,515		
28T	150,996			159,234		
Subtotal	4,677,034	455,917	255,829	4,765,637	496,498	265,552
Metrobus Total-Virginia*	18,185,069	1,892,575	1,156,515	18,187,763	1,998,570	1,187,426

* Excludes Holidays

**Figure 11: Metrobus Northern Virginia Passenger Trips
Monthly Totals, FY 2013 - 2014**



■ FY 2013 Passengers ■ FY 2014 Passengers

**Figure 12: Metrobus Northern Virginia Annual Passenger Trips,
FY 2000 - FY 2014**

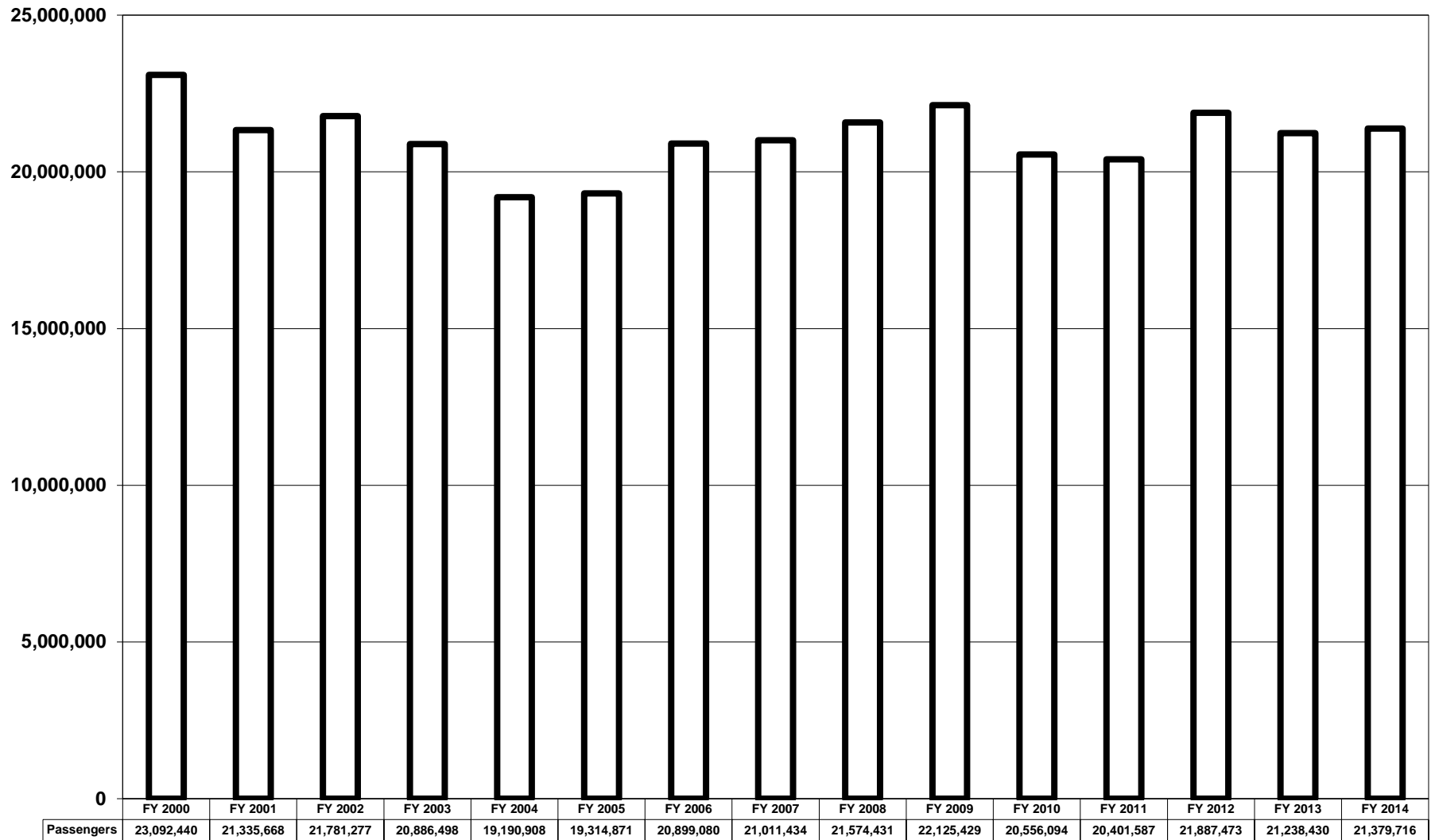


Figure 13: ART Annual Passenger Trips, FY 2000 - FY 2014

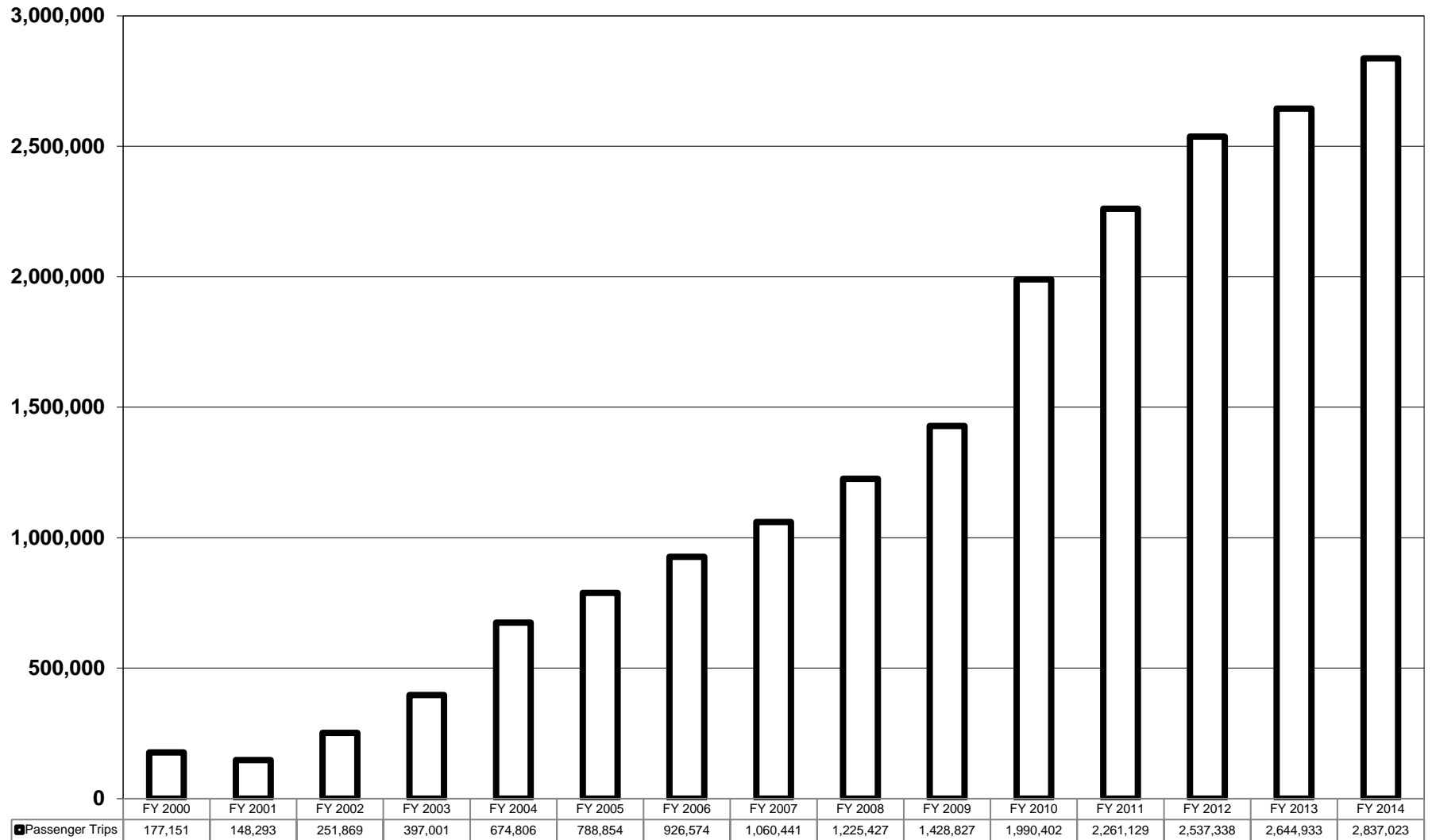


Figure 14: CUE Annual Passenger Trips, FY 2000 - FY 2014

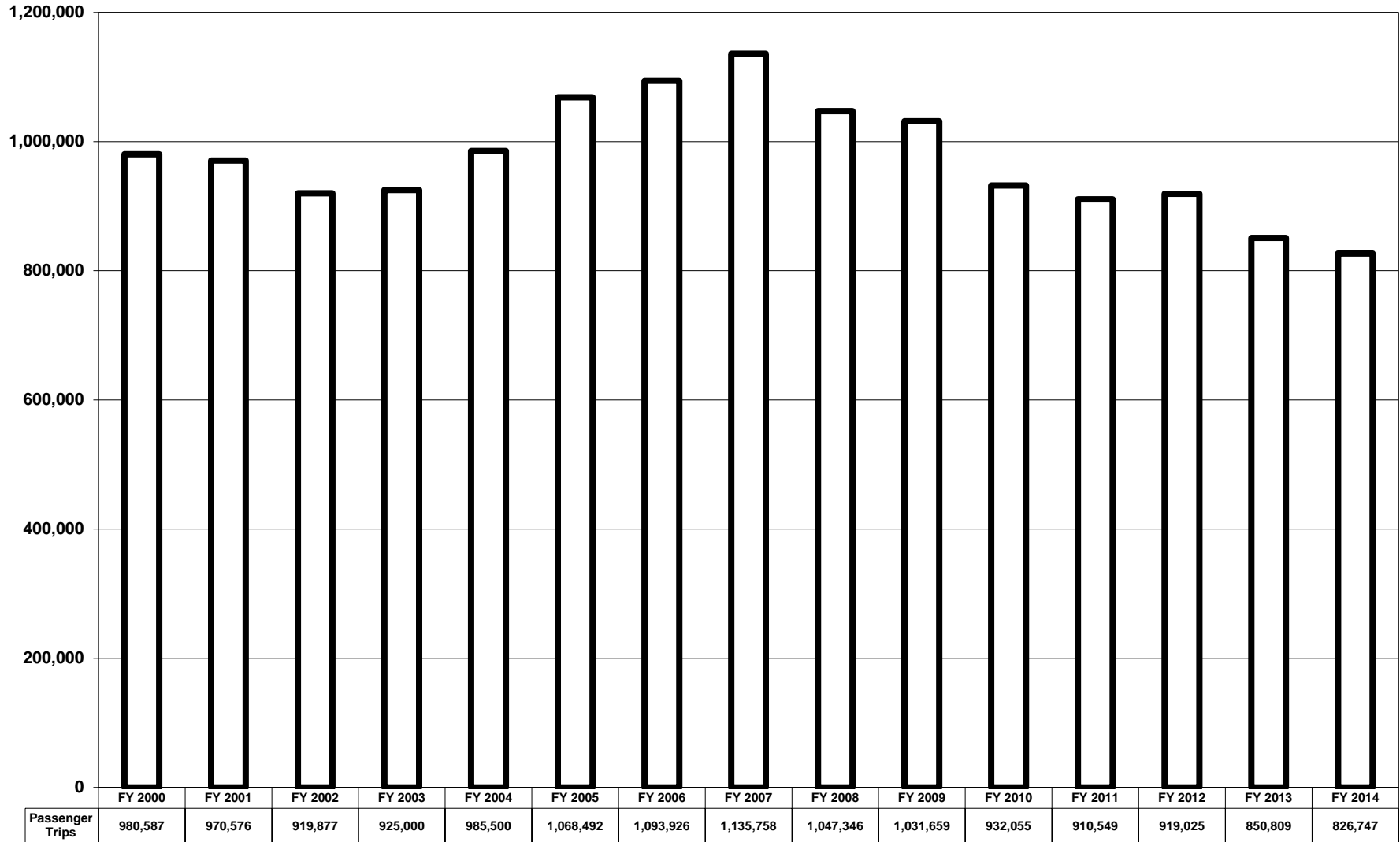


Figure 15: DASH Annual Passenger Trips, FY 2000 - FY 2014
(in thousands)

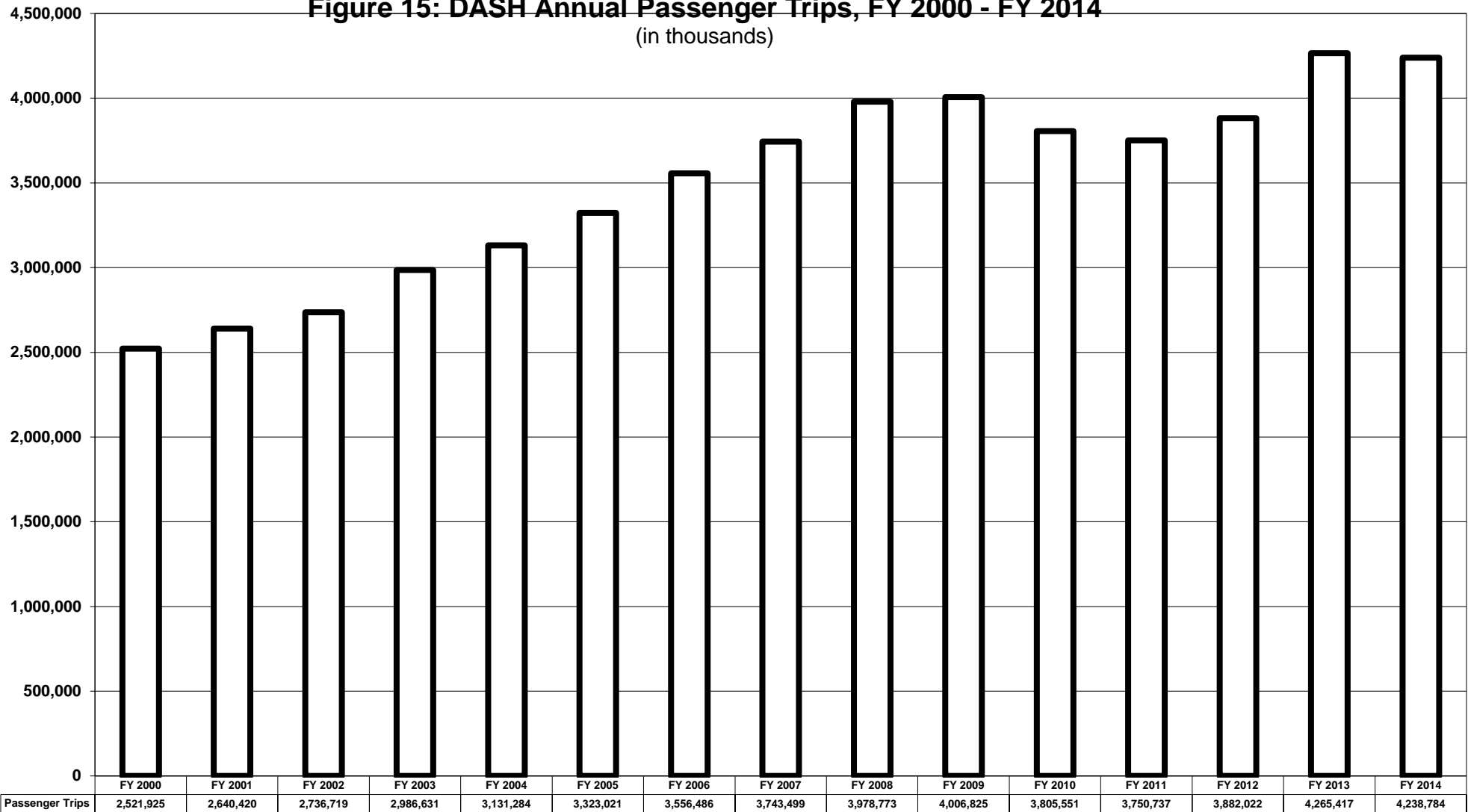


Figure 16: Fairfax Connector Annual Passenger Trips, FY 2000- FY 2014

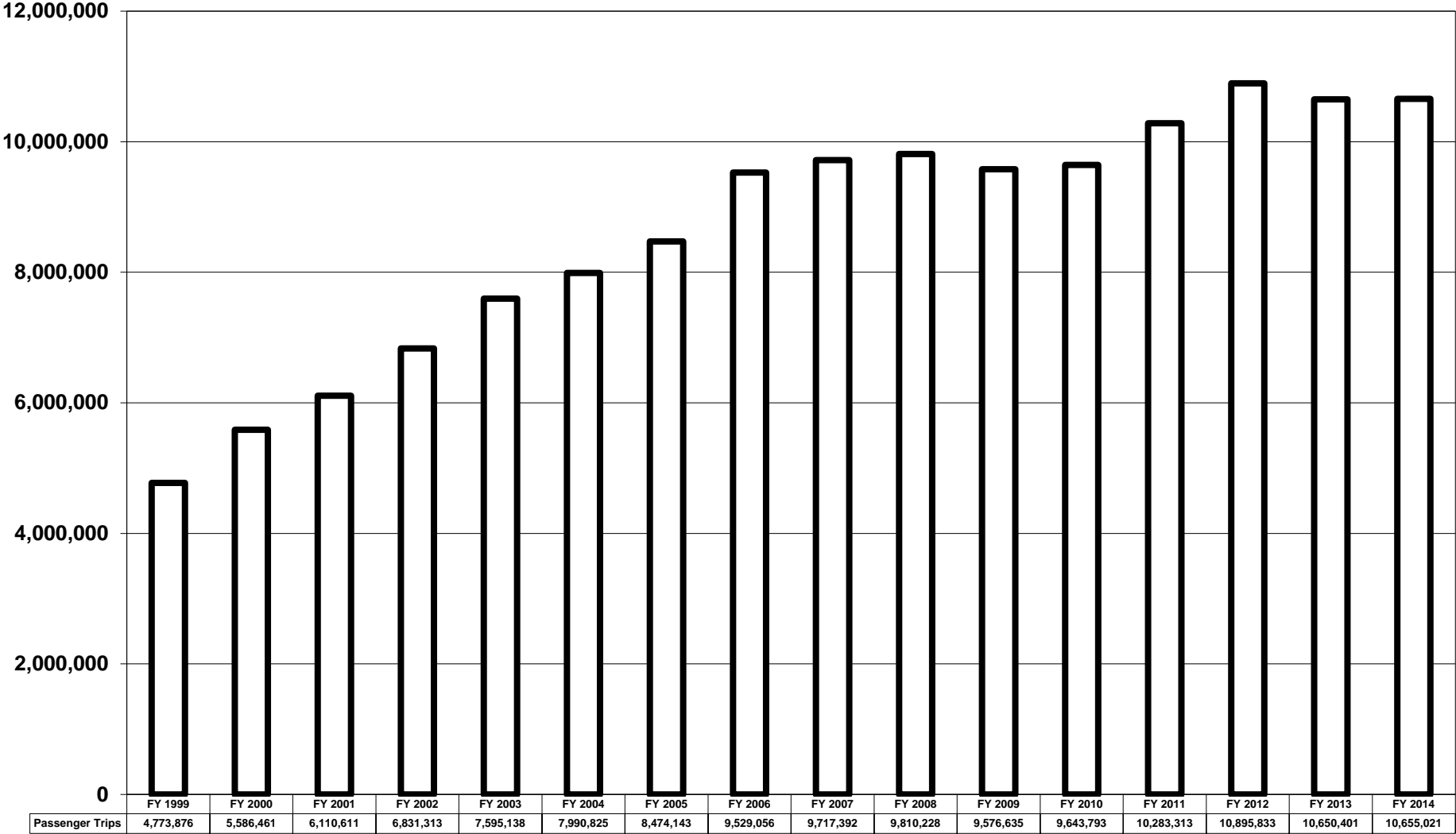
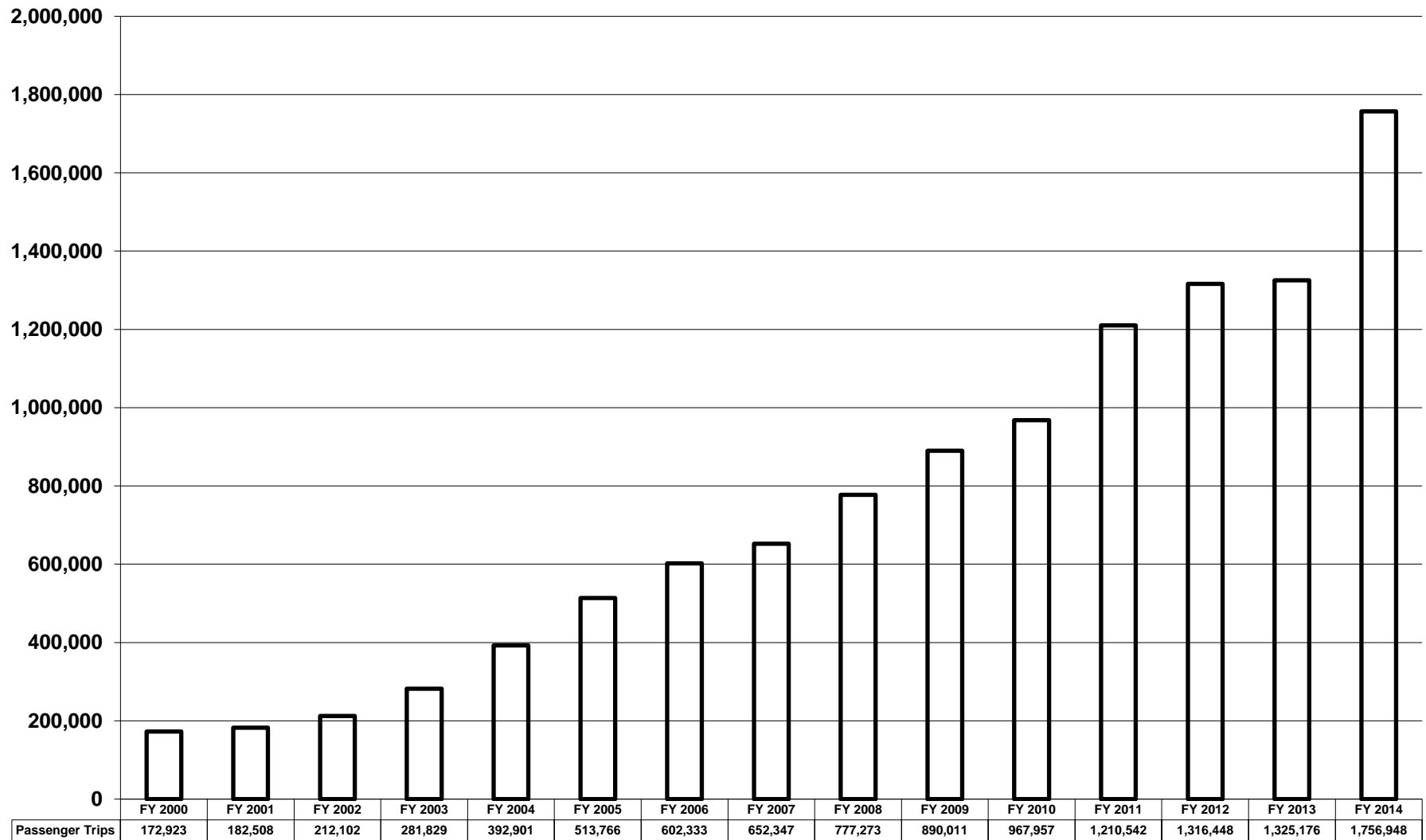


Figure 17: Loudoun County Transit Annual Passenger Trips, FY 2000 - FY 2014



**Figure 18: PRTC Omni Ride / Omni Link (Combined)
Annual Passenger Trips, FY 2000 - FY 2014**

