

FY 2013 TRANSIT PERFORMANCE UPDATE
List of Figures

Figure	Title
1	Public Transit Systems Operating in Northern Virginia - Operating Statistics and Performance Indicators, FY 2013
2	Northern Virginia Average Weekday and Annual Public Transit Passenger Trips, FY 2012-2013
3	FY2012-2013 Metrorail Ridership Summary, Average Daily Passenger Trips by Station
3A	FY2012-2013 Metrorail Ridership Summary, Average Daily Passenger Trips by Station (Weekday)
3B	FY2012-2013 Metrorail Ridership Summary, Average Daily Passenger Trips by Station (Saturday)
3C	FY2012-2013 Metrorail Ridership Summary, Average Daily Passenger Trips by Station (Sunday)
4	FY2012-2013 Metrorail Ridership Summary, Annual Passenger Trips by Station
4A	FY2012-2013 Metrorail Ridership Summary, Annual Passenger Trips by Station (Weekday)
4B	FY2012-2013 Metrorail Ridership Summary, Annual Passenger Trips by Station (Saturday)
4C	FY2012-2013 Metrorail Ridership Summary, Annual Passenger Trips by Station (Sunday)
5	Metrorail Monthly Northern Virginia Passenger Trips, FY2012-2013
6	Metrorail Annual Northern Virginia Passenger Trips, FY1999-2013
7	VRE Monthly Passenger Trips, FY2012-2013
8	VRE Annual Passenger Trips, FY1999-2013
9	Northern Virginia Metrobus Average Daily Passenger Trips, FY2012-2013
10	Northern Virginia Metrobus Annual Passenger Trips, FY2012-2013
11	Metrobus Northern Virginia Passenger Trips, Monthly Totals, FY2012-2013
12	Metrobus Northern Virginia Annual Passenger Trips, FY1999-2013
13	ART Annual Passenger Trips, FY1999-2013
14	CUE Annual Passenger Trips, FY1999-2013
15	DASH Annual Passenger Trips, FY1999-2013
16	Fairfax Connector Annual Passenger Trips, FY1999-2013
17	Loudoun County Transit Annual Passenger Trips, FY1999-2013
18	PRTC Omni Ride / Omni Link (Combined) Annual Passenger Trips, FY1999-2013

**Figure 1: Public Transit Systems Operating in Northern Virginia
Operating Statistics and Performance Indicators, FY 2013**

	Fairfax Connector	Potomac and Rappahannock Transportation Commission Omni Ride / Omni Link	Virginia Railway Express (VRE)	Alexandria DASH**	City of Fairfax CUE	Arlington Transit (ART)	Loudoun County Transit	Washington Metropolitan Area Transit Authority Metrobus (Northern Virginia) Metrorail (Northern Virginia)	
Unlinked Passenger Trips (UPT)	10,650,401	3,287,153	4,550,062	4,265,417	850,809	2,644,933	1,325,176	21,238,430	107,323,104
Vehicle Revenue Miles (VRM)	9,515,092	3,218,369	2,081,168	1,473,735	441,979	1,149,715	1,719,809	10,577,652	29,741,872
Vehicle Revenue Hours (VRH)	619,558	165,947	66,522	168,838	33,792	108,553	51,048	813,871	1,276,990
Passenger Miles Traveled (PMT)	80,190,090	57,376,637	149,745,124	10,407,617	3,088,437	5,554,359	42,267,152	66,550,018	608,526,703
Fleet Size (Vehicles Available for Annual Maximum Service)	263	153	111	79	12	47	65	1487*	1108*
Average Fleet Age (years)	3.5	7.4	13	6.7	8.0	4.40	7	6.8*	22.9*
Average Weekday Unlinked Trips	37,614	13,307	18,878	14,507	3,074	9,426	5,479	73,032	326,761
Average Trip Length (miles)	9.78	21.44	33.10	2.40	not available	2.70	35.56	3.13*	5.67*
On Time Performance	95.9%	not available	95.5%	92.16%	86.0%	90.4%	95.0%	76.7%*	91.9%*
Operating Costs	\$72,033,351	\$28,885,735	\$80,637,108	\$13,765,513	\$2,899,811	\$8,891,075	\$10,157,454	\$124,451,581	\$262,101,715

Source: Information obtained directly from individual transit systems, as reported to NTD in unaudited annual reports.

* WMATA sytemwide data.

** Includes King Street Trolley.

Note: NVTC formula for estimating NoVa share of Virginia Metrorail ridership revised in FY13. Where indicated, FY12 numbers have been adjusted to enable a year-over-year comparison.

Figure 2: Northern Virginia Average Weekday and Annual Public Transit Passenger Trips, FY 2012 - 2013

System	Average Weekday Passenger Trips, FY 2012	Average Weekday Passenger Trips, FY 2013	Annual Passenger Trips, FY 2012	Annual Passenger Trips, FY 2013
Metrorail Virginia*	342,473	326,761	113,074,728	107,323,104
Metrobus Virginia	75,135	73,032	21,887,473	21,238,430
Fairfax Connector	38,053	37,614	10,895,833	10,650,401
VRE	18,873	18,878	4,702,196	4,550,062
DASH	13,325	14,507	4,309,179	4,265,417
PRTC Omni Ride /				
Omni Link	12,874	13,307	3,444,640	3,287,153
CUE	3,215	3,074	919,025	850,809
ART	9,041	9,426	2,537,338	2,644,933
Loudoun County Transit	5,322	5,479	1,316,448	1,325,176
Total	518,311	502,078	163,086,860	156,135,485

Note: Ridership on WMATA reimbursable services such as REX, PikeRide, and TAGS is included in the Metrobus Virginia ridership figure.

*NVTC formula for estimating NoVa share of Virginia Metrorail ridership revised in FY13. FY12 ridership adjusted based on FY13 formula.

**Figure 3: FY 2012-FY2013 Metrorail Ridership Summary
Average Daily Passenger Trips by Station**

Station	Weekday FY 2012**	Saturday FY 2012**	Sunday FY 2012**	Weekday FY 2013	Saturday FY 2013	Sunday FY 2013
Stations in Alexandria*						
Blue/Yellow Line Stations						
Braddock Road	8,891	3,622	2,313	8,606	3,469	2,254
Van Dorn Street	7,329	3,231	1,823	6,820	3,064	1,927
Eisenhower Avenue	4,093	2,657	1,665	3,883	2,382	1,460
King Street	17,828	9,635	6,355	17,627	9,610	6,475
Total Alexandria:	38,141	19,145	12,156	36,937	18,526	12,115
Stations in Arlington						
Orange Line Stations						
East Falls Church	8,382	5,633	3,372	8,241	5,231	3,052
Ballston	23,948	10,134	5,623	23,239	10,327	6,138
Virginia Square	7,814	2,828	1,635	7,495	2,814	1,678
Clarendon	9,426	5,476	2,670	9,558	5,882	2,910
Courthouse	14,954	6,145	3,618	15,049	6,412	3,755
Rosslyn	33,313	13,027	9,109	31,123	12,540	8,795
Blue/Yellow Line Stations						
Arlington Cemetery	2,892	4,203	3,880	2,649	4,170	3,662
Pentagon	34,480	5,107	3,079	32,579	4,841	3,009
Pentagon City	32,750	22,664	14,494	31,216	21,994	14,421
Crystal City	27,818	11,445	7,444	25,324	11,062	7,511
National Airport	12,075	8,038	11,665	12,283	8,111	11,726
Total Arlington:	207,852	94,701	66,587	198,757	93,383	66,657
Stations in Fairfax County*						
Orange Line Stations						
Vienna	27,798	11,336	6,215	26,372	9,556	5,313
Dunn Loring	10,455	4,311	2,401	9,919	3,783	2,146
West Falls Church	21,645	4,978	3,011	20,707	4,784	2,777
Blue/Yellow Line Stations						
Huntington	17,983	7,180	4,754	17,078	6,809	4,509
Franconia-Springfield	18,599	8,039	4,472	16,992	7,560	4,783
Total Fairfax:	96,480	35,843	20,853	91,068	32,492	19,528
Total Virginia:	342,473	149,690	99,596	326,761	144,401	98,301

*Van Dorn Street is paid for by Alexandria and Fairfax County on a 50/50 basis

**NVTC formula for estimating NoVa share of Virginia Metrorail ridership revised in FY13. FY12 ridership adjusted based on FY13 formula.

**Figure 3A: FY 2012-2013 Metrorail Ridership Summary
Average Daily Passenger Trips by Station (Weekday)**

Station	Weekday FY 2012**	Weekday FY 2013	Total Change FY 12-13	Percentage Change FY 12-13
Stations in Alexandria*				
Blue/Yellow Line Stations				
Braddock Road	8,891	8,606	-285	-3.2%
Van Dorn Street	7,329	6,820	-509	-7.0%
Eisenhower Avenue	4,093	3,883	-210	-5.1%
King Street	17,828	17,627	-200	-1.1%
Total Alexandria:	38,141	36,937	-1,204	-3.2%
Stations in Arlington				
Orange Line Stations				
East Falls Church	8,382	8,241	-141	-1.7%
Ballston	23,948	23,239	-709	-3.0%
Virginia Square	7,814	7,495	-319	-4.1%
Clarendon	9,426	9,558	132	1.4%
Courthouse	14,954	15,049	95	0.6%
Rosslyn	33,313	31,123	-2,190	-6.6%
Blue/Yellow Line Stations				
Arlington Cemetery	2,892	2,649	-243	-8.4%
Pentagon	34,480	32,579	-1,901	-5.5%
Pentagon City	32,750	31,216	-1,535	-4.7%
Crystal City	27,818	25,324	-2,494	-9.0%
National Airport	12,075	12,283	208	1.7%
Total Arlington:	207,852	198,757	-9,095	-4.4%
Stations in Fairfax County*				
Orange Line Stations				
Vienna	27,798	26,372	-1,426	-5.1%
Dunn Loring	10,455	9,919	-537	-5.1%
West Falls Church	21,645	20,707	-938	-4.3%
Blue/Yellow Line Stations				
Huntington	17,983	17,078	-904	-5.0%
Franconia-Springfield	18,599	16,992	-1,608	-8.6%
Total Fairfax:	96,480	91,068	-5,412	-5.6%
Total Virginia:	342,473	326,761	-15,712	-4.6%

*Van Dorn Street is paid for by Alexandria and Fairfax County on a 50/50 basis

**Figure 3B: FY 2012-2013 Metrorail Ridership Summary
Average Daily Passenger Trips by Station (Saturday)**

Station	Saturday FY 2012**	Saturday FY 2013	Total Change FY 12-13	Percentage Change FY 12-13
Stations in Alexandria*				
Blue/Yellow Line Stations				
Braddock Road	3,622	3,469	-153	-4.2%
Van Dorn Street	3,231	3,064	-167	-5.2%
Eisenhower Avenue	2,657	2,382	-275	-10.3%
King Street	9,635	9,610	-25	-0.3%
Total Alexandria:	19,145	18,526	-619	-3.2%
Stations in Arlington				
Orange Line Stations				
East Falls Church	5,633	5,231	-403	-7.1%
Ballston	10,134	10,327	193	1.9%
Virginia Square	2,828	2,814	-14	-0.5%
Clarendon	5,476	5,882	405	7.4%
Courthouse	6,145	6,412	267	4.4%
Rosslyn	13,027	12,540	-487	-3.7%
Blue/Yellow Line Stations				
Arlington Cemetery	4,203	4,170	-32	-0.8%
Pentagon	5,107	4,841	-266	-5.2%
Pentagon City	22,664	21,994	-670	-3.0%
Crystal City	11,445	11,062	-384	-3.4%
National Airport	8,038	8,111	72	0.9%
Total Arlington:	94,701	93,383	-1,318	-1.4%
Stations in Fairfax County*				
Orange Line Stations				
Vienna	11,336	9,556	-1,781	-15.7%
Dunn Loring	4,311	3,783	-528	-12.2%
West Falls Church	4,978	4,784	-194	-3.9%
Blue/Yellow Line Stations				
Huntington	7,180	6,809	-370	-5.2%
Franconia-Springfield	8,039	7,560	-479	-6.0%
Total Fairfax:	35,843	32,492	-3,352	-9.4%
Total Virginia:	149,690	144,401	-5,289	-3.5%

*Van Dorn Street is paid for by Alexandria and Fairfax County on a 50/50 basis

**Figure 3C: FY 2012-2013 Metrorail Ridership Summary
Average Daily Passenger Trips by Station (Sunday)**

Station	Sunday FY 2012**	Sunday FY 2013	Total Change FY 12-13	Percentage Change FY 12-13
Stations in Alexandria*				
Blue/Yellow Line Stations				
Braddock Road	2,313	2,254	-59	-2.6%
Van Dorn Street	1,823	1,927	104	5.7%
Eisenhower Avenue	1,665	1,460	-206	-12.3%
King Street	6,355	6,475	121	1.9%
Total Alexandria:	12,156	12,115	-40	-0.3%
Stations in Arlington				
Orange Line Stations				
East Falls Church	3,372	3,052	-319	-9.5%
Ballston	5,623	6,138	516	9.2%
Virginia Square	1,635	1,678	43	2.6%
Clarendon	2,670	2,910	240	9.0%
Courthouse	3,618	3,755	137	3.8%
Rosslyn	9,109	8,795	-314	-3.4%
Blue/Yellow Line Stations				
Arlington Cemetery	3,880	3,662	-218	-5.6%
Pentagon	3,079	3,009	-69	-2.3%
Pentagon City	14,494	14,421	-73	-0.5%
Crystal City	7,444	7,511	68	0.9%
National Airport	11,665	11,726	61	0.5%
Total Arlington:	66,587	66,657	70	0.1%
Stations in Fairfax County*				
Orange Line Stations				
Vienna	6,215	5,313	-902	-14.5%
Dunn Loring	2,401	2,146	-256	-10.6%
West Falls Church	3,011	2,777	-234	-7.8%
Blue/Yellow Line Stations				
Huntington	4,754	4,509	-245	-5.2%
Franconia-Springfield	4,472	4,783	312	7.0%
Total Fairfax:	20,853	19,528	-1,325	-6.4%
Total Virginia:	99,596	98,301	-1,295	-1.3%

*Van Dorn Street is paid for by Alexandria and Fairfax County on a 50/50 basis

**Figure 4: FY 2012-2013 Metrorail Ridership Summary
Annual Passenger Trips by Station**

Station	Weekday FY 2012**	Saturday FY 2012**	Sunday FY 2012**	Weekday FY 2013	Saturday FY 2013	Sunday FY 2013
Stations in Alexandria*						
Blue/Yellow Line Stations						
Braddock Road	2,318,967	193,573	121,139	2,237,148	179,971	113,880
Van Dorn Street	1,911,580	172,774	96,100	1,773,552	159,370	97,343
Eisenhower Avenue	1,067,044	142,216	86,273	1,010,139	122,972	74,665
King Street	4,649,670	515,262	332,403	4,582,439	499,964	328,343
Total Alexandria:	9,947,261	1,023,825	635,915	9,603,279	962,276	614,231
Stations in Arlington						
Orange Line Stations						
East Falls Church	2,186,542	304,369	175,961	2,143,079	272,742	154,384
Ballston	6,246,705	540,826	294,723	6,040,274	534,544	308,448
Virginia Square	2,038,137	151,047	85,773	1,947,480	147,052	85,304
Clarendon	2,458,845	292,492	140,223	2,484,083	306,619	147,132
Courthouse	3,900,575	328,435	190,912	3,911,813	334,043	189,702
Rosslyn	8,688,230	696,524	482,667	8,092,084	651,212	443,681
Blue/Yellow Line Stations						
Arlington Cemetery	752,528	227,322	203,628	690,697	217,641	184,966
Pentagon	8,995,667	271,168	161,884	8,468,948	250,370	151,757
Pentagon City	8,542,889	1,208,149	756,850	8,116,862	1,142,593	733,621
Crystal City	7,254,075	613,491	392,297	6,583,327	573,680	380,018
National Airport	3,150,931	428,621	607,336	3,197,651	418,652	593,754
Total Arlington:	54,215,125	5,062,444	3,492,255	51,676,299	4,849,148	3,372,766
Stations in Fairfax County*						
Orange Line Stations						
Vienna	7,252,192	603,960	326,485	6,856,756	499,752	272,528
Dunn Loring	2,727,895	229,641	126,091	2,578,785	197,813	110,325
West Falls Church	5,646,441	262,760	158,917	5,383,206	250,040	143,127
Blue/Yellow Line Stations						
Huntington	4,690,914	382,812	248,465	4,441,261	353,344	228,940
Franconia-Springfield	4,851,743	430,577	236,675	4,420,591	392,720	240,663
Total Fairfax:	25,169,184	1,909,750	1,096,634	23,680,598	1,693,668	995,585
TOTAL VIRGINIA:	89,331,570	7,996,020	5,224,804	84,960,176	7,505,092	4,982,582

*Van Dorn Street is paid for by Alexandria and Fairfax County on a 50/50 basis

**NVTC formula for estimating NoVa share of Virginia Metrorail ridership revised in FY13. FY12 ridership adjusted based on FY13 formula.

**Figure 4A: FY 2012-2013 Metrorail Ridership Summary
Annual Passenger Trips by Station (Weekday)**

Station	Weekday FY 2012**	Weekday FY 2013	Total Change FY 12-13	Percentage Change FY 12-13
Stations in Alexandria*				
Blue/Yellow Line Stations				
Braddock Road	2,318,967	2,237,148	-81,819	-3.5%
Van Dorn Street	1,911,580	1,773,552	-138,027	-7.2%
Eisenhower Avenue	1,067,044	1,010,139	-56,905	-5.3%
King Street	4,649,670	4,582,439	-67,231	-1.4%
Total Alexandria:	9,947,261	9,603,279	-343,983	-3.5%
Stations in Arlington				
Orange Line Stations				
East Falls Church	2,186,542	2,143,079	-43,464	-2.0%
Ballston	6,246,705	6,040,274	-206,431	-3.3%
Virginia Square	2,038,137	1,947,480	-90,657	-4.4%
Clarendon	2,458,845	2,484,083	25,237	1.0%
Courthouse	3,900,575	3,911,813	11,238	0.3%
Rosslyn	8,688,230	8,092,084	-596,146	-6.9%
Blue/Yellow Line Stations				
Arlington Cemetery	752,528	690,697	-61,831	-8.2%
Pentagon	8,995,667	8,468,948	-526,719	-5.9%
Pentagon City	8,542,889	8,116,862	-426,027	-5.0%
Crystal City	7,254,075	6,583,327	-670,748	-9.2%
National Airport	3,150,931	3,197,651	46,720	1.5%
Total Arlington:	54,215,125	51,676,299	-2,538,826	-4.7%
Stations in Fairfax County*				
Orange Line Stations				
Vienna	7,252,192	6,856,756	-395,436	-5.5%
Dunn Loring	2,727,895	2,578,785	-149,110	-5.5%
West Falls Church	5,646,441	5,383,206	-263,235	-4.7%
Blue/Yellow Line Stations				
Huntington	4,690,914	4,441,261	-249,653	-5.3%
Franconia-Springfield	4,851,743	4,420,591	-431,152	-8.9%
Total Fairfax:	25,169,184	23,680,598	-1,488,586	-5.9%
Total Virginia:	89,331,570	84,960,176	-4,371,394	-4.9%

*Van Dorn Street is paid for by Alexandria and Fairfax County on a 50/50 basis

**Figure 4B: FY 2012-2013 Metrorail Ridership Summary
Annual Passenger Trips by Station (Saturday)**

Station	Saturday FY 2012**	Saturday FY 2013	Total Change FY 12-13	Percentage Change FY 12-13
Stations in Alexandria*				
Blue/Yellow Line Stations				
Braddock Road	193,573	179,971	-13,602	-7.0%
Van Dorn Street	172,774	159,370	-13,405	-7.8%
Eisenhower Avenue	142,216	122,972	-19,244	-13.5%
King Street	515,262	499,964	-15,298	-3.0%
Total Alexandria:	1,023,825	962,276	-61,549	-6.0%
Stations in Arlington				
Orange Line Stations				
East Falls Church	304,369	272,742	-31,627	-10.4%
Ballston	540,826	534,544	-6,282	-1.2%
Virginia Square	151,047	147,052	-3,995	-2.6%
Clarendon	292,492	306,619	14,127	4.8%
Courthouse	328,435	334,043	5,608	1.7%
Rosslyn	696,524	651,212	-45,312	-6.5%
Blue/Yellow Line Stations				
Arlington Cemetery	227,322	217,641	-9,681	-4.3%
Pentagon	271,168	250,370	-20,798	-7.7%
Pentagon City	1,208,149	1,142,593	-65,556	-5.4%
Crystal City	613,491	573,680	-39,811	-6.5%
National Airport	428,621	418,652	-9,968	-2.3%
Total Arlington:	5,062,444	4,849,148	-213,296	-4.2%
Stations in Fairfax County*				
Orange Line Stations				
Vienna	603,960	499,752	-104,208	-17.3%
Dunn Loring	229,641	197,813	-31,828	-13.9%
West Falls Church	262,760	250,040	-12,721	-4.8%
Blue/Yellow Line Stations				
Huntington	382,812	353,344	-29,467	-7.7%
Franconia-Springfield	430,577	392,720	-37,858	-8.8%
Total Fairfax:	1,909,750	1,693,668	-216,082	-11.3%
Total Virginia:	7,996,020	7,505,092	-490,928	-6.1%

*Van Dorn Street is paid for by Alexandria and Fairfax County on a 50/50 basis

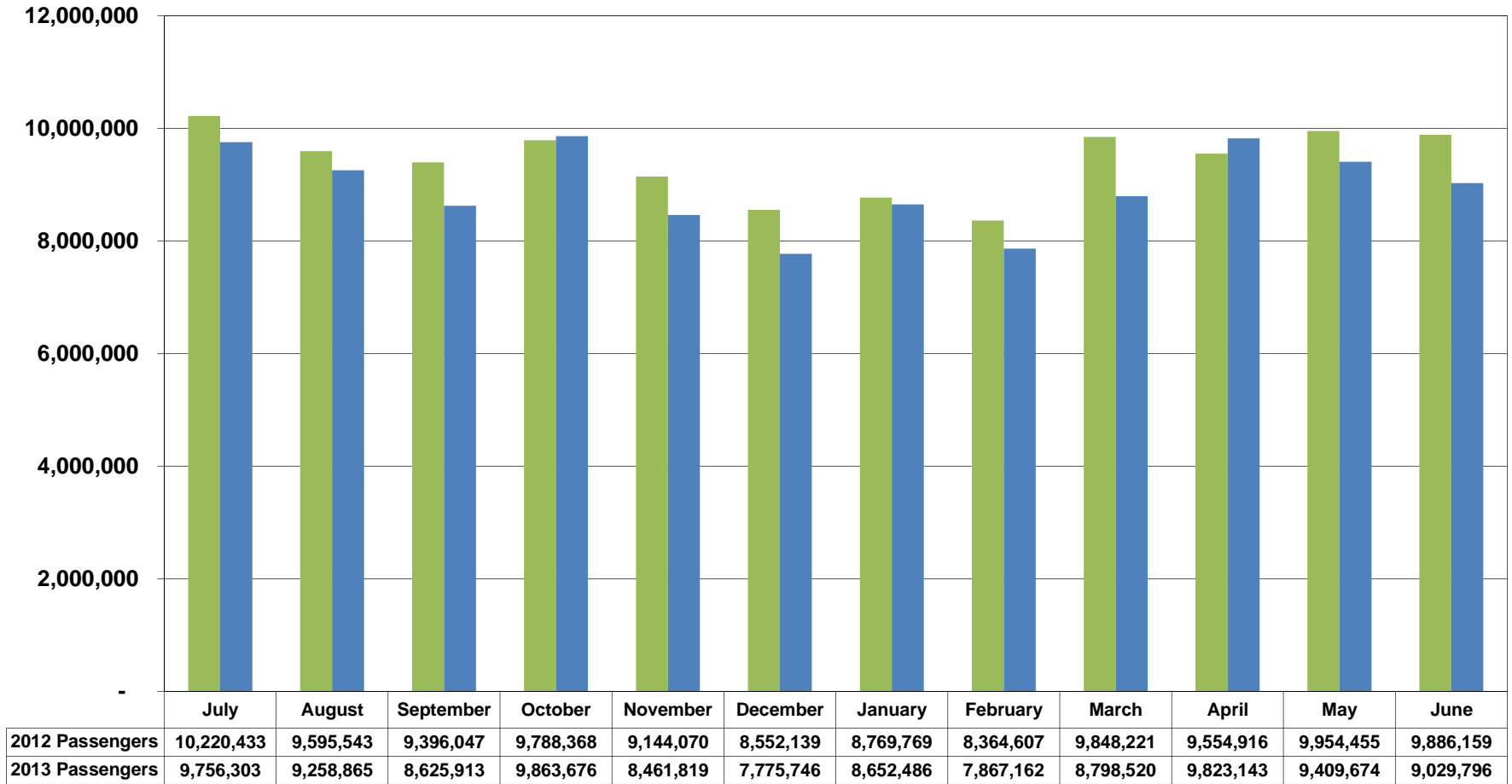
**Figure 4C: FY 2012-2013 Metrorail Ridership Summary
Annual Passenger Trips by Station (Sunday)**

Station	Sunday FY 2012**	Sunday FY 2013	Total Change FY 12-13	Percentage Change FY 12-13
Stations in Alexandria*				
Blue/Yellow Line Stations				
Braddock Road	121,139	113,880	-7,260	-6.0%
Van Dorn Street	96,100	97,343	1,243	1.3%
Eisenhower Avenue	86,273	74,665	-11,608	-13.5%
King Street	332,403	328,343	-4,060	-1.2%
Total Alexandria:	635,915	614,231	-21,684	-3.4%
Stations in Arlington				
Orange Line Stations				
East Falls Church	175,961	154,384	-21,577	-12.3%
Ballston	294,723	308,448	13,725	4.7%
Virginia Square	85,773	85,304	-469	-0.5%
Clarendon	140,223	147,132	6,909	4.9%
Courthouse	190,912	189,702	-1,211	-0.6%
Rosslyn	482,667	443,681	-38,986	-8.1%
Blue/Yellow Line Stations				
Arlington Cemetery	203,628	184,966	-18,662	-9.2%
Pentagon	161,884	151,757	-10,127	-6.3%
Pentagon City	756,850	733,621	-23,229	-3.1%
Crystal City	392,297	380,018	-12,280	-3.1%
National Airport	607,336	593,754	-13,583	-2.2%
Total Arlington:	3,492,255	3,372,766	-119,489	-3.4%
Stations in Fairfax County*				
Orange Line Stations				
Vienna	326,485	272,528	-53,957	-16.5%
Dunn Loring	126,091	110,325	-15,766	-12.5%
West Falls Church	158,917	143,127	-15,790	-9.9%
Blue/Yellow Line Stations				
Huntington	248,465	228,940	-19,525	-7.9%
Franconia-Springfield	236,675	240,663	3,988	1.7%
Total Fairfax:	1,096,634	995,585	-101,049	-9.2%
Total Virginia:	5,224,804	4,982,582	-242,223	-4.6%

*Van Dorn Street is paid for by Alexandria and Fairfax County on a 50/50 basis

Figure 5: Metrorail Monthly Northern Virginia Passenger Trips, FY2012 - FY2013

Note: NVTC formula for estimating NoVa share of Virginia Metrorail ridership revised in FY13. FY12 ridership adjusted based on FY13 formula.



■ 2012 Passengers ■ 2013 Passengers

Figure 6: Metrorail Annual Northern Virginia Passenger Trips, FY 1999 - 2013

Note: NVTC formula for estimating NoVa share of Virginia Metrorail ridership revised in FY13.

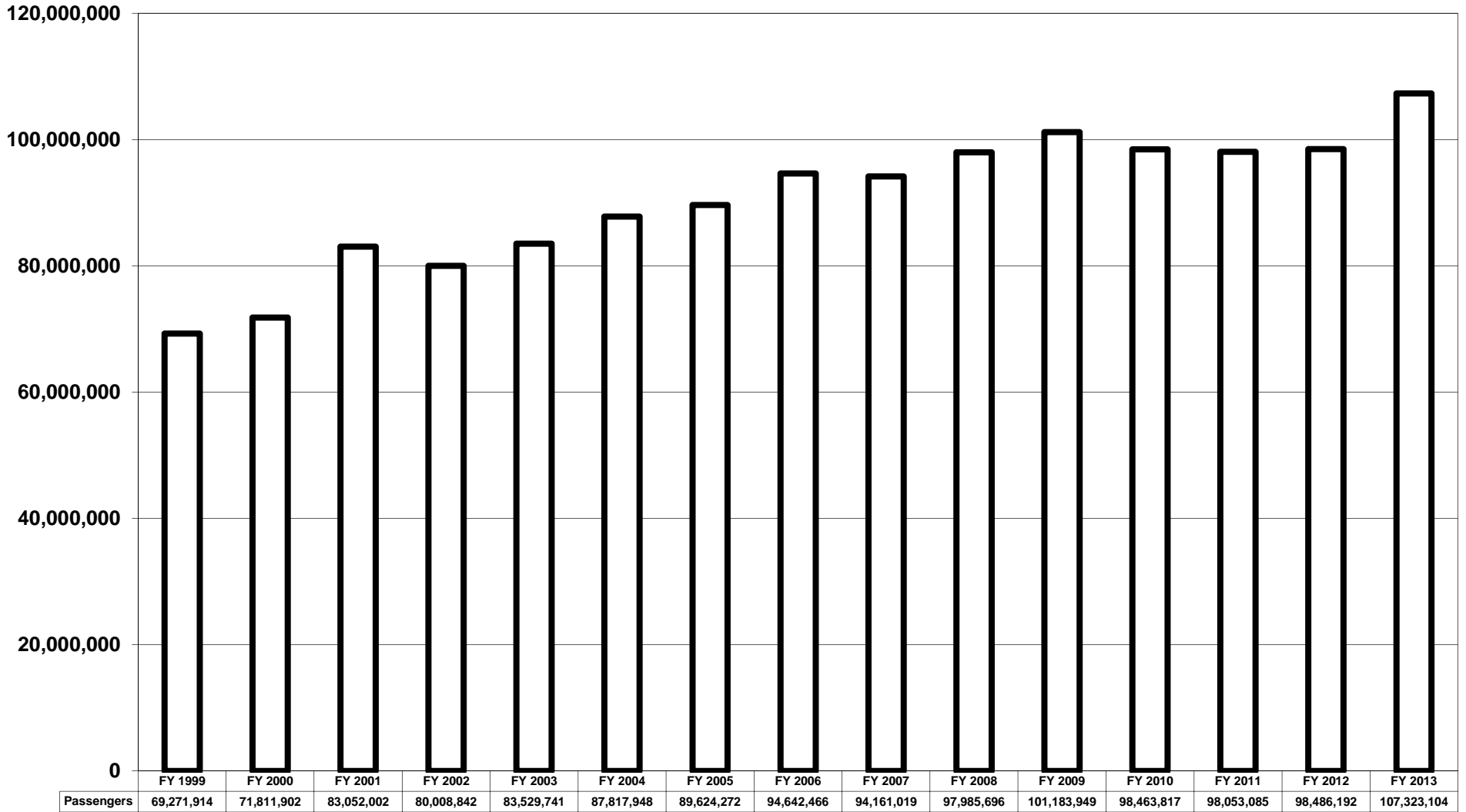
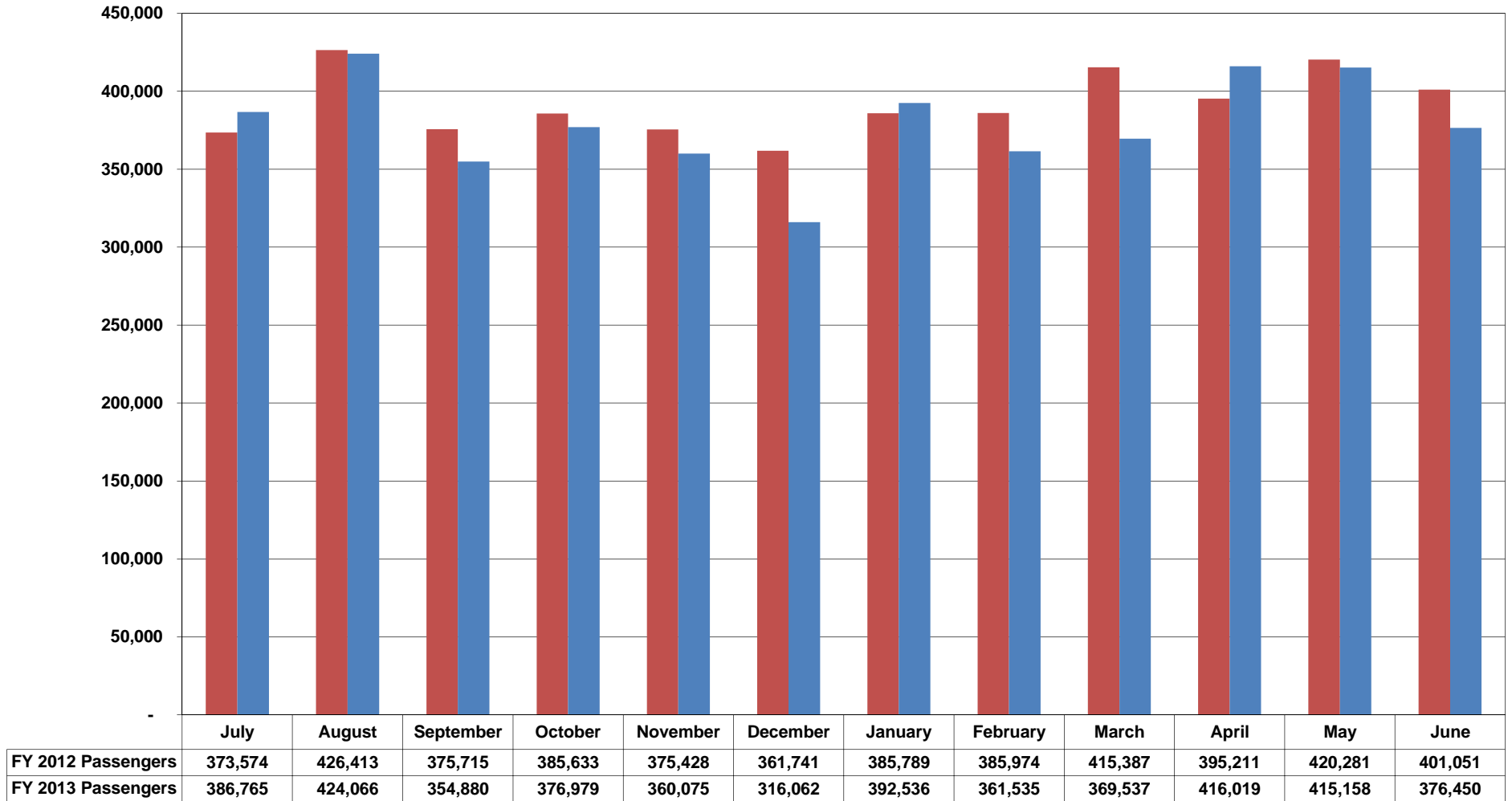


Figure 7: VRE Monthly Passenger Trips, FY 2012 - 2013



■ FY 2012 Passengers ■ FY 2013 Passengers

Figure 8: VRE Annual Passenger Trips, FY 1999 - FY 2013

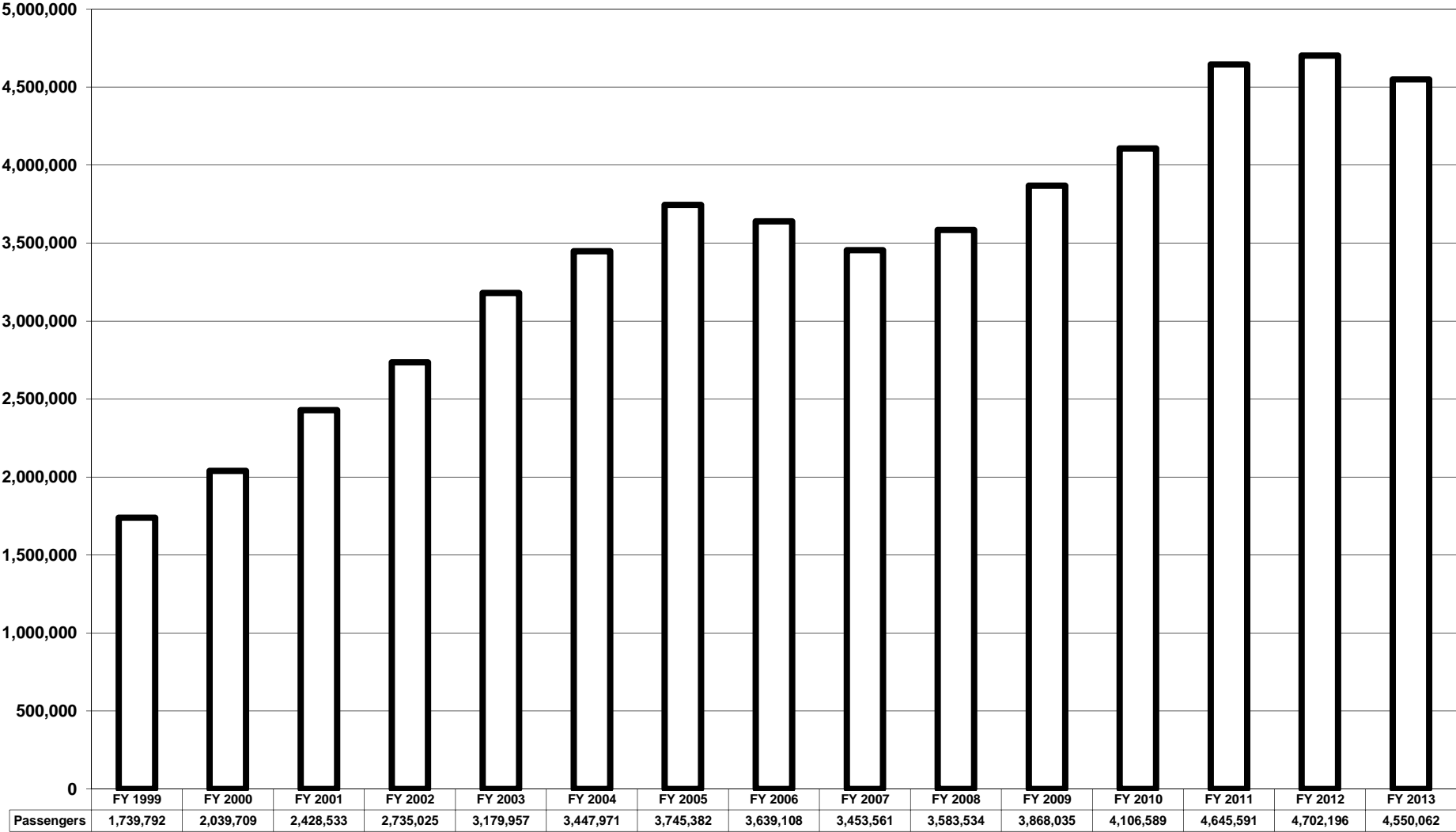


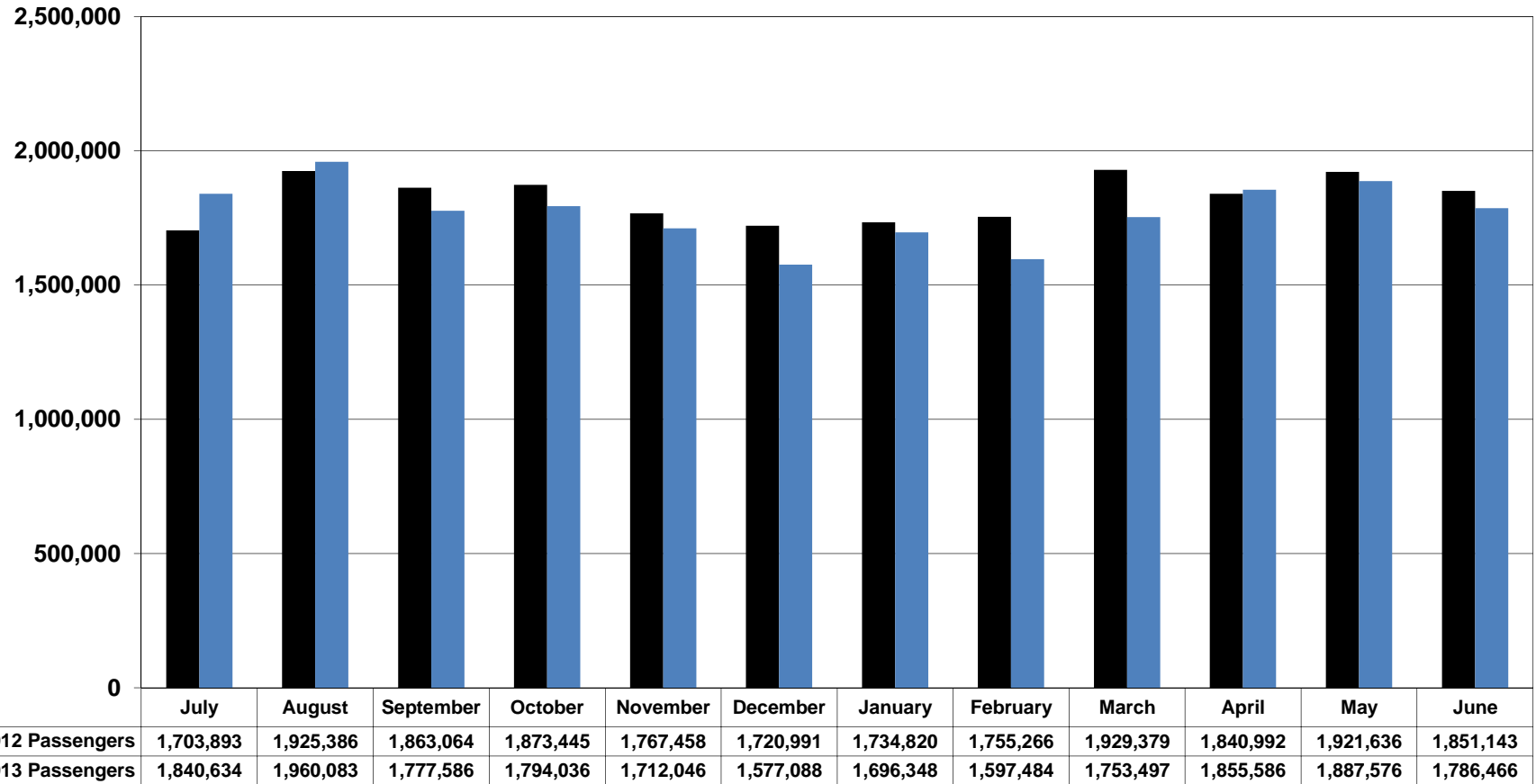
Figure 9: Northern Virginia Metrobus Average Daily Passenger Trips, FY 2012 - FY 2013

	Weekday FY 12	Saturday FY 12	Sunday FY 12	Weekday FY 13	Saturday FY 13	Sunday FY 13
Ballston Terminal Services						
1A,B,C, E,F,Z	4,770	2,565	1,829	4,501	2,825	1,785
2A,B,C,G	3,389	1,704	654	3,399	1,894	689
10B	2,326	1,488	947	2,317	1,609	914
22A,B	1,678	491		1,338	505	
23A,C	3,699	2,063	1,430	3,775	2,408	1,424
25A,C,D,E (also serve Pentagon Terminal)	1,384	320	354	1,346	353	373
25B	1,433	501		1,314	551	
38B	3,760	1,801	1,440	3,718	2,206	1,597
Subtotal	22,439	10,932	6,653	21,707	12,352	6,783
Rosslyn Terminal Services						
3A,B,E	2,498	879	489	2,474	1,011	493
4A,B,E,H	2,083	622	416	1,955	739	411
5A	1,237	718	726	1,219	795	765
Subtotal	5,818	2,219	1,631	5,648	2,544	1,668
Pentagon Terminal Services						
7A,B,C,E,F,H,P,W,X, Y	4,948	1,447	1,104	4,945	1,610	1,119
7M	1,615			1,802		
8S,W,X,Z	1,249			1,141		
9A,E	1,751	996	730	1,620	1,075	706
10A,E	2,457	1,223	785	2,343	1,298	810
13F,G		121	85		124	90
16A,B,D,E,J,P	5,959	3,742	2,877	5,858	4,202	2,871
16L	194			196		
16G,H,K	3,859	2,243	1,472	3,634	2,444	1,482
17 Series	1,514			1,580		
18 Series	1,646			1,640		
21A,D	586			534		
28F,G	648			513		
29C,E,G,H,X	1,097			1,088		
Subtotal	27,523	9,771	7,053	26,894	10,752	7,078
Other Terminal Services						
REX	3,544	1,968	915	3,402	2,138	885
11Y	433			482		
15K,L	491			452		
15M	198			172		
24T	162			173		
TAGS Shuttle	472			368		
28A,X	5,422	3,732	3,243	5,300	4,122	3,271
29K,N	2,389	1,004		2,338	1,119	
2T	800	460	303	785	474	254
3T	767	282		698	287	
3Y	392			428		
9S	1,350			1,133		
16X (was 16F)	924			939		
16Y	1,381			1,509		
28T	632			606		
Subtotal	19,356	7,446	4,460	18,783	8,141	4,411
Metrobus Total-Virginia*	75,136	30,369	19,798	73,032	33,789	19,940

Figure 10: Northern Virginia Metrobus Annual Passenger Trips, FY 2012 - FY 2013

	Weekday FY 12	Saturday FY 12	Sunday FY 12	Weekday FY 13	Saturday FY 13	Sunday FY 13
Ballston Terminal Services						
1A,B,C, E,F,Z	1,197,159	148,762	104,266	1,120,660	158,201	103,530
2A,B,C,G	850,633	98,829	37,263	846,321	106,089	39,983
10B	583,922	86,323	53,980	576,925	90,102	53,027
22A,B	421,202	28,454		333,094	28,293	
23A,C	928,455	119,655	81,482	940,029	134,820	82,589
25A,C,D,E (also serve Pentagon Terminal)	347,332	18,539	20,162	335,095	19,757	21,644
25B	359,575	29,057		327,080	30,881	
38B	943,861	104,438	82,091	925,834	123,544	92,652
Subtotal	5,632,139	634,057	379,244	5,405,038	691,687	393,425
Rosslyn Terminal Services						
3A,B,E	627,058	51,003	27,886	616,060	56,598	28,569
4A,B,E,H	522,799	36,068	23,696	486,745	41,376	23,819
5A	310,437	41,654	41,397	303,518	44,516	44,366
Subtotal	1,460,294	128,725	92,979	1,406,323	142,490	96,754
Pentagon Terminal Services						
7A,B,C,E,F,H,P,W,X, Y	1,242,039	83,918	62,951	1,231,275	90,531	64,904
7M	365,080			448,783		
8S,W,X,Z	313,385			284,149		
9A,E	439,426	57,784	41,637	403,268	60,188	40,944
10A,E	616,647	70,908	44,744	583,370	72,688	46,974
13F,G		7,037	4,854		6,929	5,245
16A,B,D,E,J,P	1,495,647	217,033	163,962	1,458,634	235,292	166,499
16L	48,819			48,775		
16G,H,K	968,643	130,066	83,883	904,928	136,853	85,941
17 Series	380,096			393,367		
18 Series	413,134			408,302		
21A,D	147,100			132,997		
28F,G	162,590			127,803		
29C,E,G,H,X	275,261			271,023		
Subtotal	6,867,867	566,746	402,031	6,696,674	602,481	410,507
Other Terminal Services						
REX	889,441	114,129	52,140	847,153	119,731	51,351
11Y	108,771			120,126		
15K,L	123,241			112,588		
15M	49,575			42,767		
24T	40,635			42,967		
TAGS Shuttle	118,512			91,637		
28A,X	1,361,010	216,481	184,823	1,319,614	230,850	189,739
29K,N	599,618	58,215		582,072	62,687	
2T	200,830	26,695	17,269	195,346	26,553	14,739
3T	192,490	16,342		173,686	16,096	
3Y	98,323			106,466		
9S	338,857			282,142		
16X (was 16F)	231,903			233,769		
16Y	346,630			375,705		
28T	158,619			150,996		
Subtotal	4,858,455	431,862	254,232	4,677,034	455,917	255,829
Metrobus Total-Virginia*	18,818,755	1,761,390	1,128,486	18,185,069	1,892,575	1,156,515

**Figure 11: Metrobus Northern Virginia Passenger Trips
Monthly Totals, FY2012 - 2013**



■ FY 2012 Passengers ■ FY 2013 Passengers

**Figure 12: Metrobus Northern Virginia Annual Passenger Trips,
FY 1998 - FY 2013**

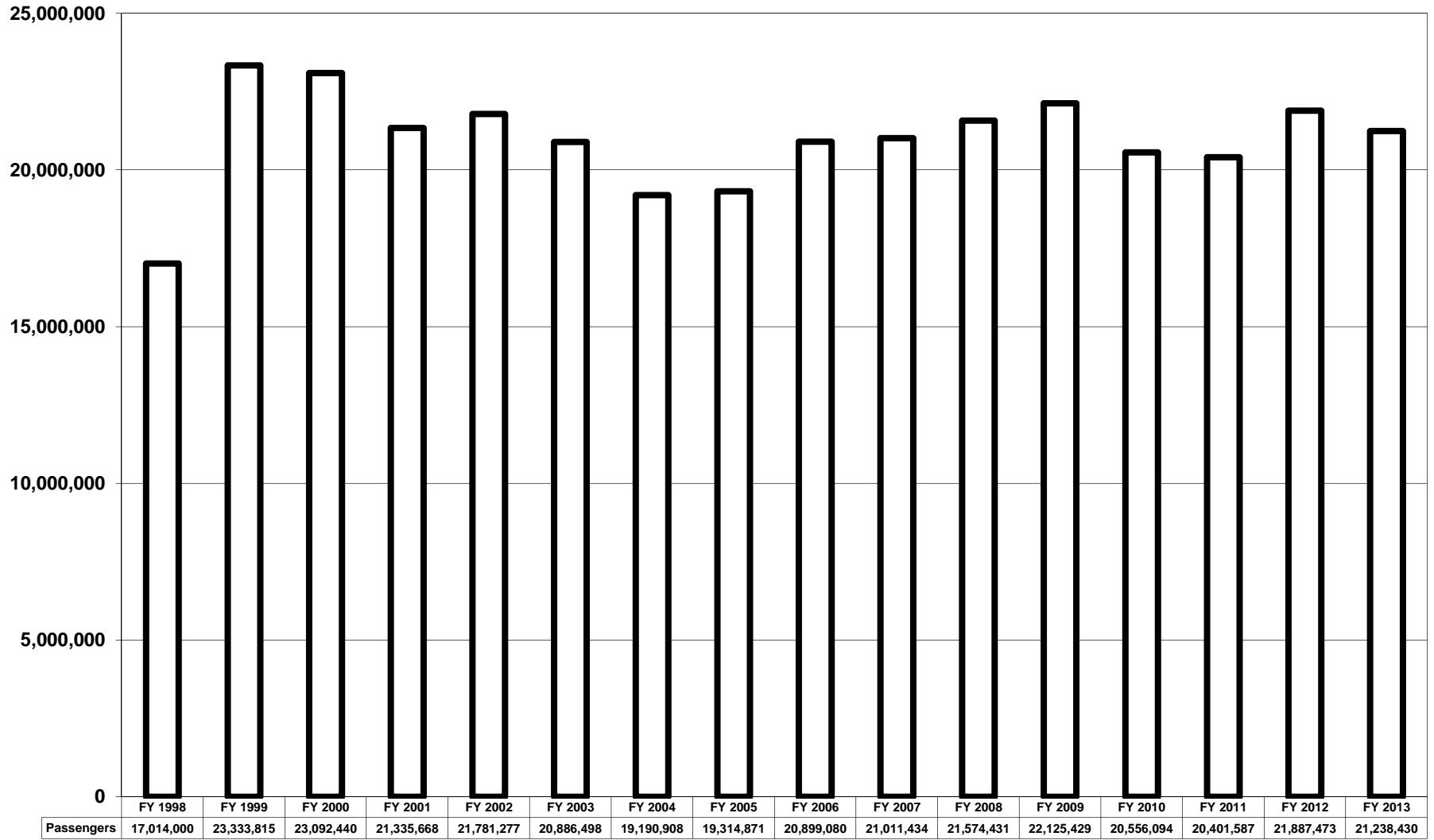


Figure 13: ART Annual Passenger Trips, FY 1999 - FY 2013

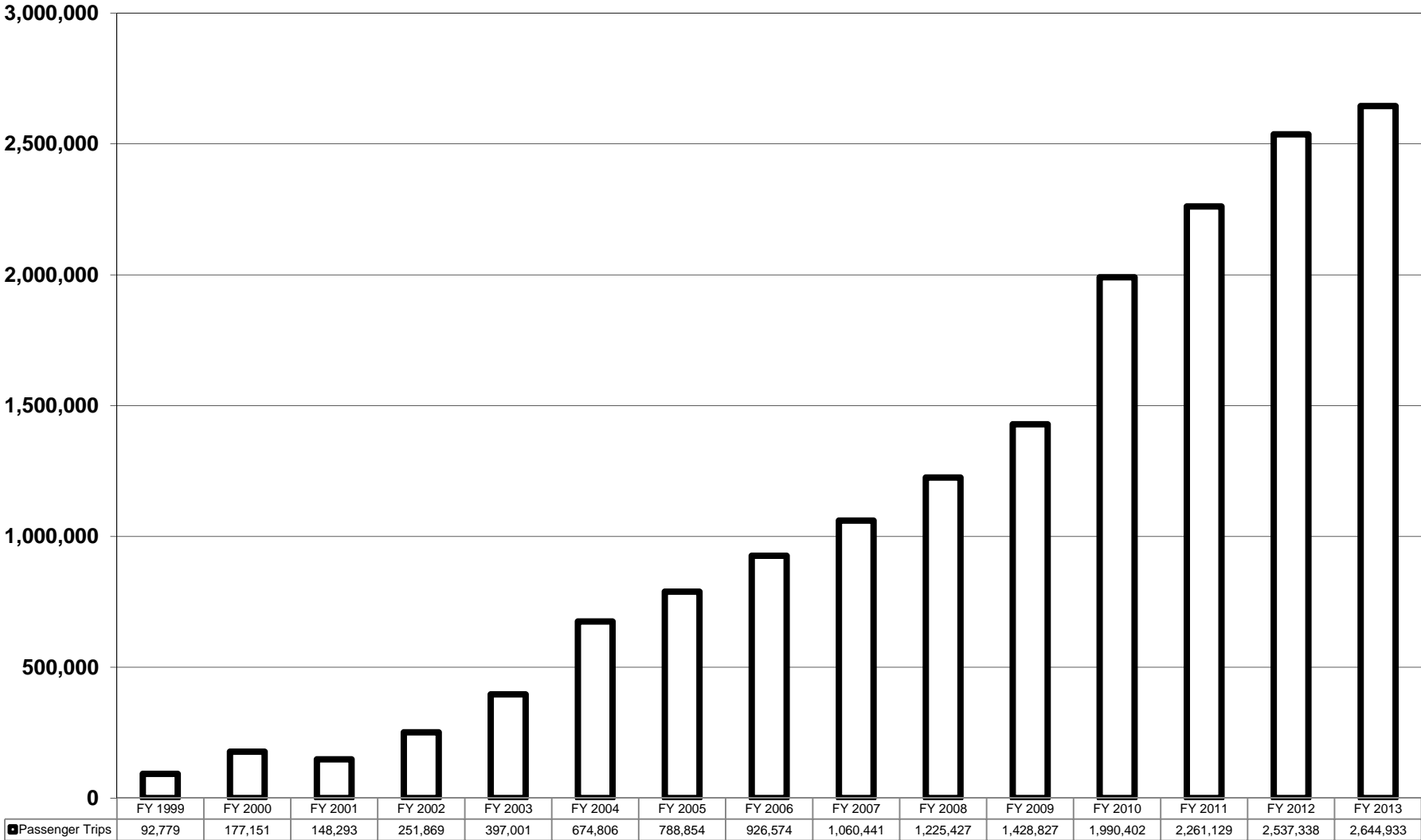


Figure 14: CUE Annual Passenger Trips, FY 1999 - FY 2013

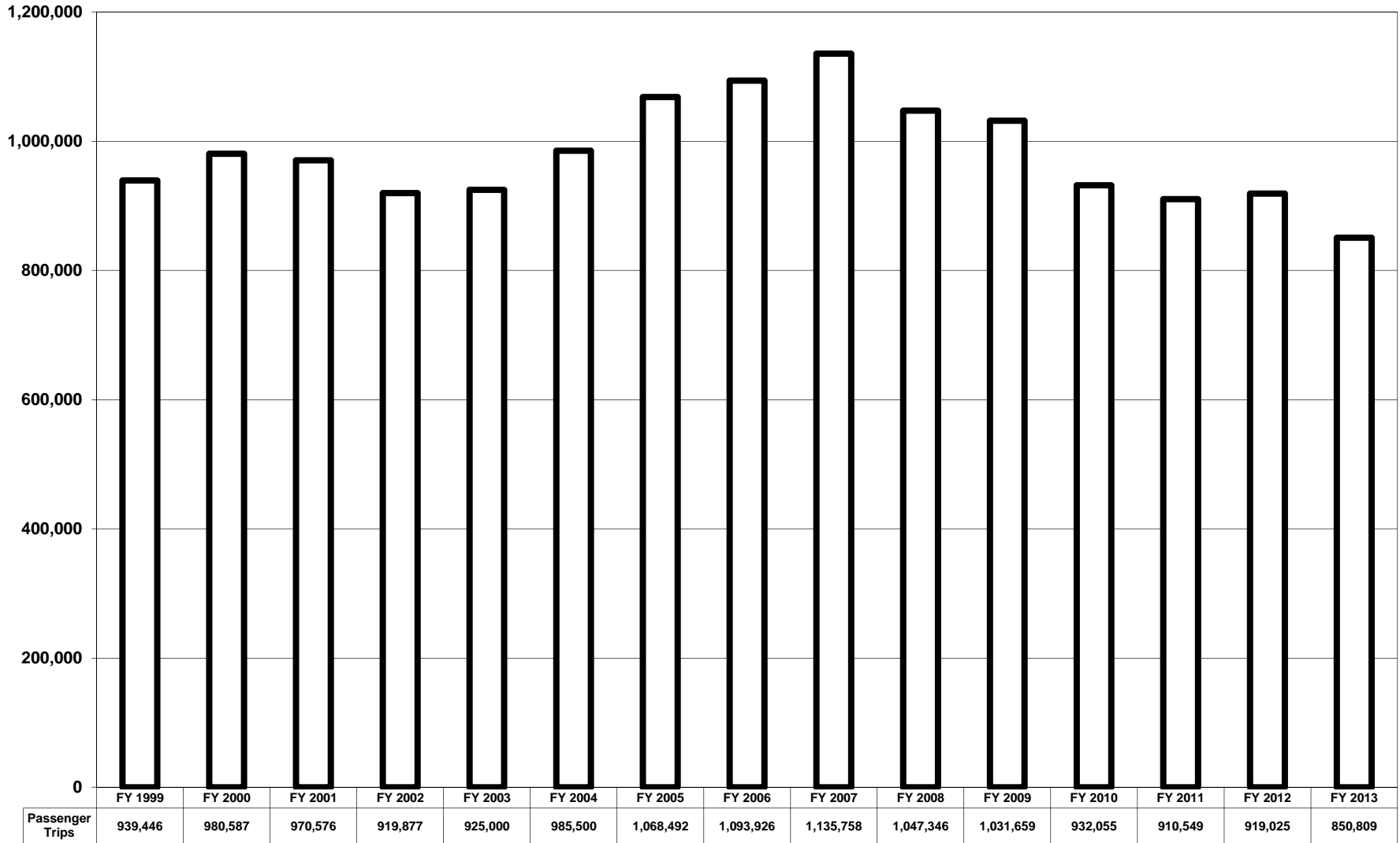
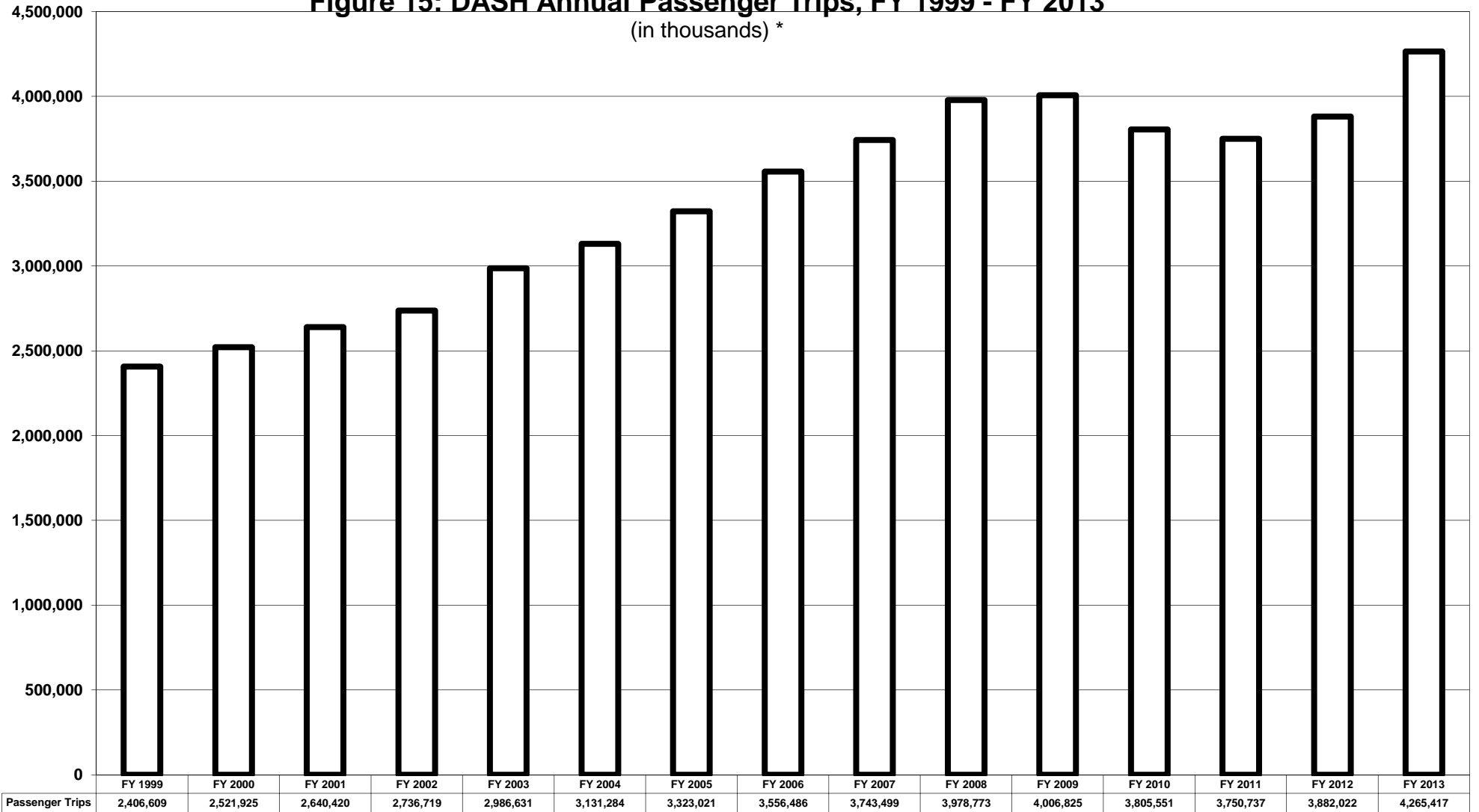


Figure 15: DASH Annual Passenger Trips, FY 1999 - FY 2013

(in thousands) *



* Includes full year of operation for the King Street Trolley, previously separately reported.

Figure 16: Fairfax Connector Annual Passenger Trips, FY 1999- FY 2013

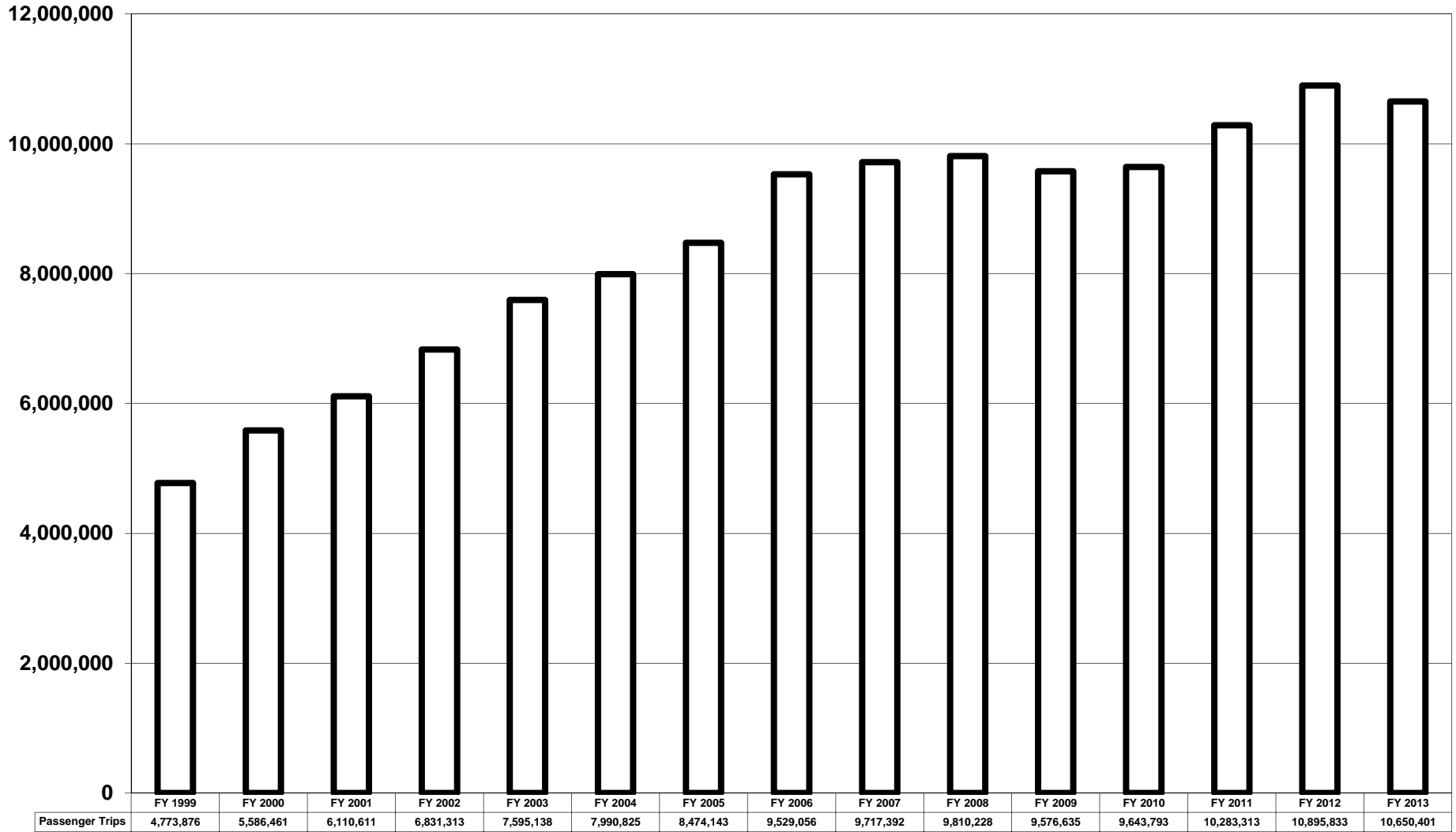
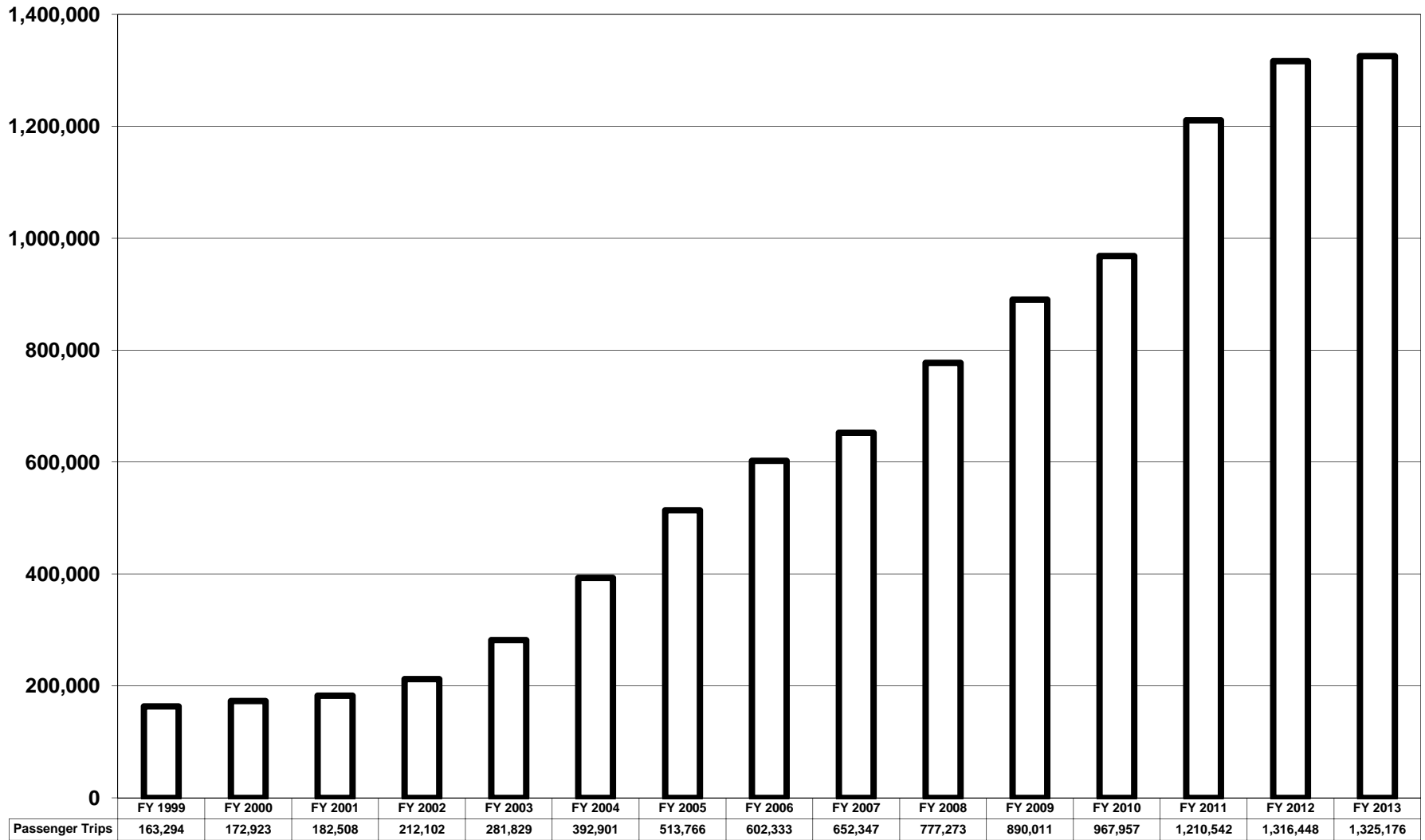


Figure 17: Loudoun County Transit Annual Passenger Trips, FY 1999 - FY 2013



**Figure 18: PRTC Omni Ride / Omni Link (Combined)
Annual Passenger Trips, FY 1999 - FY 2013**

