

FY 2012 TRANSIT PERFORMANCE UPDATE

List of Figures

Figure	Title
1	Public Transit Systems Operating in Northern Virginia - Operating Statistics and Performance Indicators, FY 2012
2	Northern Virginia Average Weekday and Annual Public Transit Passenger Trips, FY 2011-2012
3	FY2011-2012 Metrorail Ridership Summary, Average Daily Passenger Trips by Station
3A	FY2011-2012 Metrorail Ridership Summary, Average Daily Passenger Trips by Station (Weekday)
3B	FY2011-2012 Metrorail Ridership Summary, Average Daily Passenger Trips by Station (Saturday)
3C	FY2011-2012 Metrorail Ridership Summary, Average Daily Passenger Trips by Station (Sunday)
4	FY2011-2012 Metrorail Ridership Summary, Annual Passenger Trips by Station
4A	FY2011-2012 Metrorail Ridership Summary, Annual Passenger Trips by Station (Weekday)
4B	FY2011-2012 Metrorail Ridership Summary, Annual Passenger Trips by Station (Saturday)
4C	FY2011-2012 Metrorail Ridership Summary, Annual Passenger Trips by Station (Sunday)
5	Metrorail Monthly Northern Virginia Passenger Trips, FY2010-2012
6	Metrorail Annual Northern Virginia Passenger Trips, FY1996-2012
7	VRE Monthly Passenger Trips, FY2011-2012
8	VRE Annual Passenger Trips, FY1994-2012
9	Northern Virginia Metrobus Average Daily Passenger Trips, FY2011-2012
10	Northern Virginia Metrobus Annual Passenger Trips, FY2011-2012
11	Metrobus Northern Virginia Passenger Trips, Monthly Totals, FY2011-2012
12	Metrobus Northern Virginia Annual Passenger Trips, FY1996-2012
13	ART Annual Passenger Trips, FY1994-2012
14	CUE Annual Passenger Trips, FY1994-2012
15	DASH Annual Passenger Trips, FY1984-2012
16	Fairfax Connector Annual Passenger Trips, FY1994-2012
17	Loudoun County Transit Annual Passenger Trips, FY1995-2012
18	PRTC Omni Ride Annual Passenger Trips, FY1994-2012
19	PRTC Omni Link Annual Passenger Trips, FY1995-2012

Note: Data incomplete for Figure 1 as of 1.29.13

Figure 1: Public Transit Systems Operating in Northern Virginia Operating Statistics and Performance Indicators, FY 2012

Note: Data incomplete for Figure 1 as of 1.29.13

	Fairfax Connector	Potomac and Rappahannock Transportation Commission		Virginia Railway Express (VRE)	Alexandria DASH **	City of Fairfax CUE	Arlington Transit (ART)	Loudoun County Transit	Washington Metropolitan Area Transit Authority	
		Omni Ride	Omni Link						Metrobus (Northern Virginia)	Metrorail (Northern Virginia)
Unlinked Passenger Trips (UPT)	10,895,833	2,365,366	1,079,274	4,702,196	3,882,022	919,025	2,537,338	1,316,448	21,887,473	98,486,192
Vehicle Revenue Miles (VRM)	8,670,827	2,376,124	821,561	2,032,007	1,453,844	450,738	1,128,974	1,696,374	10,068,347	24,463,111
Passenger Miles Traveled (PMT)		60,182,383		151,270,107	9,472,134	3,335,905	5,328,910	41,988,758	67,794,112	547,005,422
Fleet Size (Vehicles Available for Annual Maximum Service)	257	23	116	113	77	12	55	61	1480 *	1104 *
Average Fleet Age (years)	5.2	7.48	7.3	13	6.0	7.5	4.49	6	7.5 *	21 *
Average Weekday Unlinked Trips	38,053	9,276	3,598	18,873	13,325	3,215	9,041	5,322	75,136	328,894
Average Trip Length (miles)				32.00	2.40	4.30	2.10	35.56	3.10 *	5.55 *
On Time Performance	96.9%			95.3%	91.21%	95.0%	90.0%	95.0%	75.4% *	90.2% *
Operating Costs				\$61,552,830	\$12,878,260	\$3,127,866	\$8,511,172	\$9,832,027	\$128,881,368	\$245,016,066

Source: Information obtained directly from individual transit systems, as reported to NTD in unaudited annual reports.

* WMATA sytemwide data.

** Includes King Street Trolley, April 22-June 2012; reported by purchased transportation provider Martz Group, July 2011-April 21, 2012.

Figure 2: Northern Virginia Average Weekday and Annual Public Transit Passenger Trips, FY 2011 - 2012

System	Average Weekday Passenger Trips, FY 2011	Average Weekday Passenger Trips, FY 2012	Annual Passenger Trips, FY 2011	Annual Passenger Trips, FY 2012
Metrorail Virginia	328,088	328,894	98,053,085	98,486,192
Metrobus Virginia	69,810	75,136	20,401,587	21,887,473
Fairfax Connector	35,883	38,053	10,283,313	10,895,833
VRE	18,377	18,873	4,645,591	4,702,196
DASH	12,933	13,325	3,750,737	3,882,022
PRTC Omni Ride	8,939	9,276	2,297,425	2,365,366
PRTC Omni Link	3,746	3,598	1,029,274	1,079,274
CUE	3,180	3,215	910,549	919,025
ART	8,056	9,041	2,261,129	2,537,338
Loudoun County Transit	4,897	5,322	1,210,542	1,316,448
Total	493,909	504,733	144,843,232	148,071,167

Note: Ridership on WMATA reimbursable services such as REX, PikeRide, and TAGS is included in the Metrobus Virginia ridership figure.

**Figure 3: FY 2011-FY2012 Metrorail Ridership Summary
Average Daily Passenger Trips by Station**

Station	Weekday FY 2011	Saturday FY 2011	Sunday FY 2011	Weekday FY 2012	Saturday FY 2012	Sunday FY 2012
Stations in Alexandria*						
Blue/Yellow Line Stations						
Braddock Road	8,609	3,667	2,239	8,538	3,479	2,221
Van Dorn Street	7,022	3,236	1,901	7,039	3,103	1,750
Eisenhower Avenue	3,981	2,367	1,341	3,931	2,552	1,599
King Street	15,787	8,659	5,288	17,121	9,253	6,103
Total Alexandria:	35,399	17,930	10,769	36,629	18,386	11,674
Stations in Arlington						
Orange Line Stations						
East Falls Church	7,638	4,525	2,699	8,050	5,410	3,238
Ballston	23,119	10,156	5,695	22,998	9,732	5,400
Virginia Square	7,765	2,981	1,692	7,504	2,716	1,570
Clarendon	8,121	5,133	2,444	9,052	5,259	2,564
Courthouse	14,240	6,553	3,836	14,361	5,901	3,475
Rosslyn	33,010	12,901	8,923	31,992	12,511	8,748
Blue/Yellow Line Stations						
Arlington Cemetery	2,787	4,542	3,846	2,777	4,036	3,726
Pentagon	32,013	4,711	2,840	33,113	4,905	2,957
Pentagon City	31,866	22,204	14,104	31,452	21,765	13,919
Crystal City	28,615	10,344	6,854	26,715	10,991	7,149
National Airport	11,616	7,898	11,496	11,597	7,720	11,202
Total Arlington:	200,790	91,948	64,430	199,611	90,946	63,947
Stations in Fairfax County*						
Orange Line Stations						
Vienna	26,340	11,921	6,705	26,696	10,887	5,969
Dunn Loring	9,923	4,533	2,639	10,041	4,140	2,306
West Falls Church	20,280	5,806	3,465	20,786	4,781	2,892
Blue/Yellow Line Stations						
Huntington	17,067	7,028	4,550	17,270	6,895	4,566
Franconia-Springfield	18,288	8,356	4,776	17,862	7,720	4,294
Total Fairfax:	91,899	37,644	22,136	92,655	34,422	20,026
Total Virginia:	328,088	147,522	97,335	328,894	143,755	95,647

*Van Dorn Street is paid for by Alexandria and Fairfax County on a 50/50 basis

**Figure 3A: FY 2011-2012 Metrorail Ridership Summary
Average Daily Passenger Trips by Station (Weekday)**

Station	Weekday FY 2011	Weekday FY 2012	Total Change FY 11-12	Percentage Change FY 11-12
Stations in Alexandria*				
Blue/Yellow Line Stations				
Braddock Road	8,609	8,538	-70	-0.8%
Van Dorn Street	7,022	7,039	17	0.2%
Eisenhower Avenue	3,981	3,931	-51	-1.3%
King Street	15,787	17,121	1,334	8.5%
Total Alexandria:	35,399	36,629	1,230	3.5%
Stations in Arlington				
Orange Line Stations				
East Falls Church	7,638	8,050	412	5.4%
Ballston	23,119	22,998	-121	-0.5%
Virginia Square	7,765	7,504	-261	-3.4%
Clarendon	8,121	9,052	931	11.5%
Courthouse	14,240	14,361	121	0.9%
Rosslyn	33,010	31,992	-1,018	-3.1%
Blue/Yellow Line Stations				
Arlington Cemetery	2,787	2,777	-10	-0.4%
Pentagon	32,013	33,113	1,100	3.4%
Pentagon City	31,866	31,452	-414	-1.3%
Crystal City	28,615	26,715	-1,900	-6.6%
National Airport	11,616	11,597	-19	-0.2%
Total Arlington:	200,790	199,611	-1,179	-0.6%
Stations in Fairfax County*				
Orange Line Stations				
Vienna	26,340	26,696	356	1.4%
Dunn Loring	9,923	10,041	117	1.2%
West Falls Church	20,280	20,786	506	2.5%
Blue/Yellow Line Stations				
Huntington	17,067	17,270	202	1.2%
Franconia-Springfield	18,288	17,862	-426	-2.3%
Total Fairfax:	91,899	92,655	756	0.8%
Total Virginia:	328,088	328,894	807	0.2%

*Van Dorn Street is paid for by Alexandria and Fairfax County on a 50/50 basis

**Figure 3B: FY 2011-2012 Metrorail Ridership Summary
Average Daily Passenger Trips by Station (Saturday)**

Station	Saturday FY 2011	Saturday FY 2012	Total Change FY 11-12	Percentage Change FY 11-12
Stations in Alexandria*				
Blue/Yellow Line Stations				
Braddock Road	3,667	3,479	-189	-5.1%
Van Dorn Street	3,236	3,103	-133	-4.1%
Eisenhower Avenue	2,367	2,552	184	7.8%
King Street	8,659	9,253	593	6.9%
Total Alexandria:	17,930	18,386	456	2.5%
Stations in Arlington				
Orange Line Stations				
East Falls Church	4,525	5,410	884	19.5%
Ballston	10,156	9,732	-424	-4.2%
Virginia Square	2,981	2,716	-265	-8.9%
Clarendon	5,133	5,259	127	2.5%
Courthouse	6,553	5,901	-651	-9.9%
Rosslyn	12,901	12,511	-390	-3.0%
Blue/Yellow Line Stations				
Arlington Cemetery	4,542	4,036	-506	-11.1%
Pentagon	4,711	4,905	194	4.1%
Pentagon City	22,204	21,765	-439	-2.0%
Crystal City	10,344	10,991	647	6.3%
National Airport	7,898	7,720	-178	-2.3%
Total Arlington:	91,948	90,946	-1,002	-1.1%
Stations in Fairfax County*				
Orange Line Stations				
Vienna	11,921	10,887	-1,034	-8.7%
Dunn Loring	4,533	4,140	-393	-8.7%
West Falls Church	5,806	4,781	-1,026	-17.7%
Blue/Yellow Line Stations				
Huntington	7,028	6,895	-133	-1.9%
Franconia-Springfield	8,356	7,720	-636	-7.6%
Total Fairfax:	37,644	34,422	-3,222	-8.6%
Total Virginia:	147,522	143,755	-3,768	-2.6%

*Van Dorn Street is paid for by Alexandria and Fairfax County on a 50/50 basis

**Figure 3C: FY 2011-2012 Metrorail Ridership Summary
Average Daily Passenger Trips by Station (Sunday)**

Station	Sunday FY 2011	Sunday FY 2012	Total Change FY 11-12	Percentage Change FY 11-12
Stations in Alexandria*				
Blue/Yellow Line Stations				
Braddock Road	2,239	2,221	-18	-0.8%
Van Dorn Street	1,901	1,750	-151	-7.9%
Eisenhower Avenue	1,341	1,599	258	19.2%
King Street	5,288	6,103	815	15.4%
Total Alexandria:	10,769	11,674	905	8.4%
Stations in Arlington				
Orange Line Stations				
East Falls Church	2,699	3,238	539	20.0%
Ballston	5,695	5,400	-295	-5.2%
Virginia Square	1,692	1,570	-122	-7.2%
Clarendon	2,444	2,564	120	4.9%
Courthouse	3,836	3,475	-362	-9.4%
Rosslyn	8,923	8,748	-175	-2.0%
Blue/Yellow Line Stations				
Arlington Cemetery	3,846	3,726	-120	-3.1%
Pentagon	2,840	2,957	116	4.1%
Pentagon City	14,104	13,919	-185	-1.3%
Crystal City	6,854	7,149	295	4.3%
National Airport	11,496	11,202	-294	-2.6%
Total Arlington:	64,430	63,947	-483	-0.7%
Stations in Fairfax County*				
Orange Line Stations				
Vienna	6,705	5,969	-737	-11.0%
Dunn Loring	2,639	2,306	-333	-12.6%
West Falls Church	3,465	2,892	-574	-16.5%
Blue/Yellow Line Stations				
Huntington	4,550	4,566	16	0.3%
Franconia-Springfield	4,776	4,294	-482	-10.1%
Total Fairfax:	22,136	20,026	-2,109	-9.5%
Total Virginia:	97,335	95,647	-1,688	-1.7%

*Van Dorn Street is paid for by Alexandria and Fairfax County on a 50/50 basis

**Figure 4: FY 2011-2012 Metrorail Ridership Summary
Annual Passenger Trips by Station**

Station	Weekday FY 2011	Saturday FY 2011	Sunday FY 2011	Weekday FY 2012	Saturday FY 2012	Sunday FY 2012
Stations in Alexandria*						
Blue/Yellow Line Stations						
Braddock Road	2,237,006	191,424	116,598	2,227,020	185,898	116,336
Van Dorn Street	1,825,047	168,866	99,229	1,835,785	165,924	92,290
Eisenhower Avenue	1,034,395	123,599	69,820	1,024,736	136,577	82,852
King Street	4,105,206	451,432	274,758	4,465,311	494,832	319,223
Total Alexandria:	9,201,655	935,322	560,405	9,552,852	983,231	610,701
Stations in Arlington						
Orange Line Stations						
East Falls Church	1,985,175	234,992	139,919	2,099,846	292,301	168,984
Ballston	6,007,162	528,735	296,354	5,999,023	519,383	283,037
Virginia Square	2,017,501	154,929	87,830	1,957,325	145,058	82,372
Clarendon	2,110,331	266,405	127,028	2,361,352	280,894	134,664
Courthouse	3,699,594	341,230	200,610	3,745,917	315,412	183,343
Rosslyn	8,574,321	672,999	470,188	8,343,742	668,907	463,529
Blue/Yellow Line Stations						
Arlington Cemetery	725,043	236,818	202,382	722,690	218,309	195,554
Pentagon	8,318,806	245,741	150,408	8,638,989	260,416	155,465
Pentagon City	8,287,838	1,157,321	733,945	8,204,164	1,160,246	726,841
Crystal City	7,435,004	542,236	358,017	6,966,451	589,166	376,743
National Airport	3,022,298	413,115	598,100	3,025,997	411,626	583,255
Total Arlington:	52,183,073	4,794,522	3,364,783	52,065,495	4,861,718	3,353,787
Stations in Fairfax County*						
Orange Line Stations						
Vienna	6,845,761	623,505	349,609	6,964,642	580,013	313,540
Dunn Loring	2,579,538	236,760	137,578	2,619,734	220,536	121,092
West Falls Church	5,270,591	304,246	184,661	5,422,560	252,342	152,616
Blue/Yellow Line Stations						
Huntington	4,436,506	367,065	236,858	4,504,919	367,633	238,613
Franconia-Springfield	4,753,480	437,106	250,061	4,659,371	413,505	227,291
Total Fairfax:	23,885,876	1,968,681	1,158,767	24,171,226	1,834,029	1,053,152
TOTAL VIRGINIA:	85,270,604	7,698,525	5,083,955	85,789,573	7,678,977	5,017,641

*Van Dorn Street is paid for by Alexandria and Fairfax County on a 50/50 basis

**Figure 4A: FY 2011-2012 Metrorail Ridership Summary
Annual Passenger Trips by Station (Weekday)**

Station	Weekday FY 2011	Weekday FY 2012	Total Change FY 11-12	Percentage Change FY 11-12
Stations in Alexandria*				
Blue/Yellow Line Stations				
Braddock Road	2,237,006	2,227,020	-9,986	-0.4%
Van Dorn Street	1,825,047	1,835,785	10,739	0.6%
Eisenhower Avenue	1,034,395	1,024,736	-9,659	-0.9%
King Street	4,105,206	4,465,311	360,104	8.8%
Total Alexandria:	9,201,655	9,552,852	351,197	3.8%
Stations in Arlington				
Orange Line Stations				
East Falls Church	1,985,175	2,099,846	114,671	5.8%
Ballston	6,007,162	5,999,023	-8,139	-0.1%
Virginia Square	2,017,501	1,957,325	-60,176	-3.0%
Clarendon	2,110,331	2,361,352	251,021	11.9%
Courthouse	3,699,594	3,745,917	46,324	1.3%
Rosslyn	8,574,321	8,343,742	-230,580	-2.7%
Blue/Yellow Line Stations				
Arlington Cemetery	725,043	722,690	-2,353	-0.3%
Pentagon	8,318,806	8,638,989	320,182	3.8%
Pentagon City	8,287,838	8,204,164	-83,674	-1.0%
Crystal City	7,435,004	6,966,451	-468,553	-6.3%
National Airport	3,022,298	3,025,997	3,699	0.1%
Total Arlington:	52,183,073	52,065,495	-117,578	-0.2%
Stations in Fairfax County*				
Orange Line Stations				
Vienna	6,845,761	6,964,642	118,882	1.7%
Dunn Loring	2,579,538	2,619,734	40,195	1.6%
West Falls Church	5,270,591	5,422,560	151,969	2.9%
Blue/Yellow Line Stations				
Huntington	4,436,506	4,504,919	68,412	1.5%
Franconia-Springfield	4,753,480	4,659,371	-94,109	-2.0%
Total Fairfax:	23,885,876	24,171,226	285,350	1.2%
Total Virginia:	85,270,604	85,789,573	518,969	0.6%

*Van Dorn Street is paid for by Alexandria and Fairfax County on a 50/50 basis

**Figure 4B: FY 2011-2012 Metrorail Ridership Summary
Annual Passenger Trips by Station (Saturday)**

Station	Saturday FY 2011	Saturday FY 2012	Total Change FY 11-12	Percentage Change FY 11-12
Stations in Alexandria*				
Blue/Yellow Line Stations				
Braddock Road	191,424	185,898	-5,526	-2.9%
Van Dorn Street	168,866	165,924	-2,943	-1.7%
Eisenhower Avenue	123,599	136,577	12,978	10.5%
King Street	451,432	494,832	43,399	9.6%
Total Alexandria:	935,322	983,231	47,909	5.1%
Stations in Arlington				
Orange Line Stations				
East Falls Church	234,992	292,301	57,309	24.4%
Ballston	528,735	519,383	-9,352	-1.8%
Virginia Square	154,929	145,058	-9,871	-6.4%
Clarendon	266,405	280,894	14,489	5.4%
Courthouse	341,230	315,412	-25,818	-7.6%
Rosslyn	672,999	668,907	-4,093	-0.6%
Blue/Yellow Line Stations				
Arlington Cemetery	236,818	218,309	-18,509	-7.8%
Pentagon	245,741	260,416	14,675	6.0%
Pentagon City	1,157,321	1,160,246	2,925	0.3%
Crystal City	542,236	589,166	46,930	8.7%
National Airport	413,115	411,626	-1,489	-0.4%
Total Arlington:	4,794,522	4,861,718	67,196	1.4%
Stations in Fairfax County*				
Orange Line Stations				
Vienna	623,505	580,013	-43,492	-7.0%
Dunn Loring	236,760	220,536	-16,224	-6.9%
West Falls Church	304,246	252,342	-51,904	-17.1%
Blue/Yellow Line Stations				
Huntington	367,065	367,633	568	0.2%
Franconia-Springfield	437,106	413,505	-23,601	-5.4%
Total Fairfax:	1,968,681	1,834,029	-134,653	-6.8%
Total Virginia:	7,698,525	7,678,977	-19,548	-0.3%

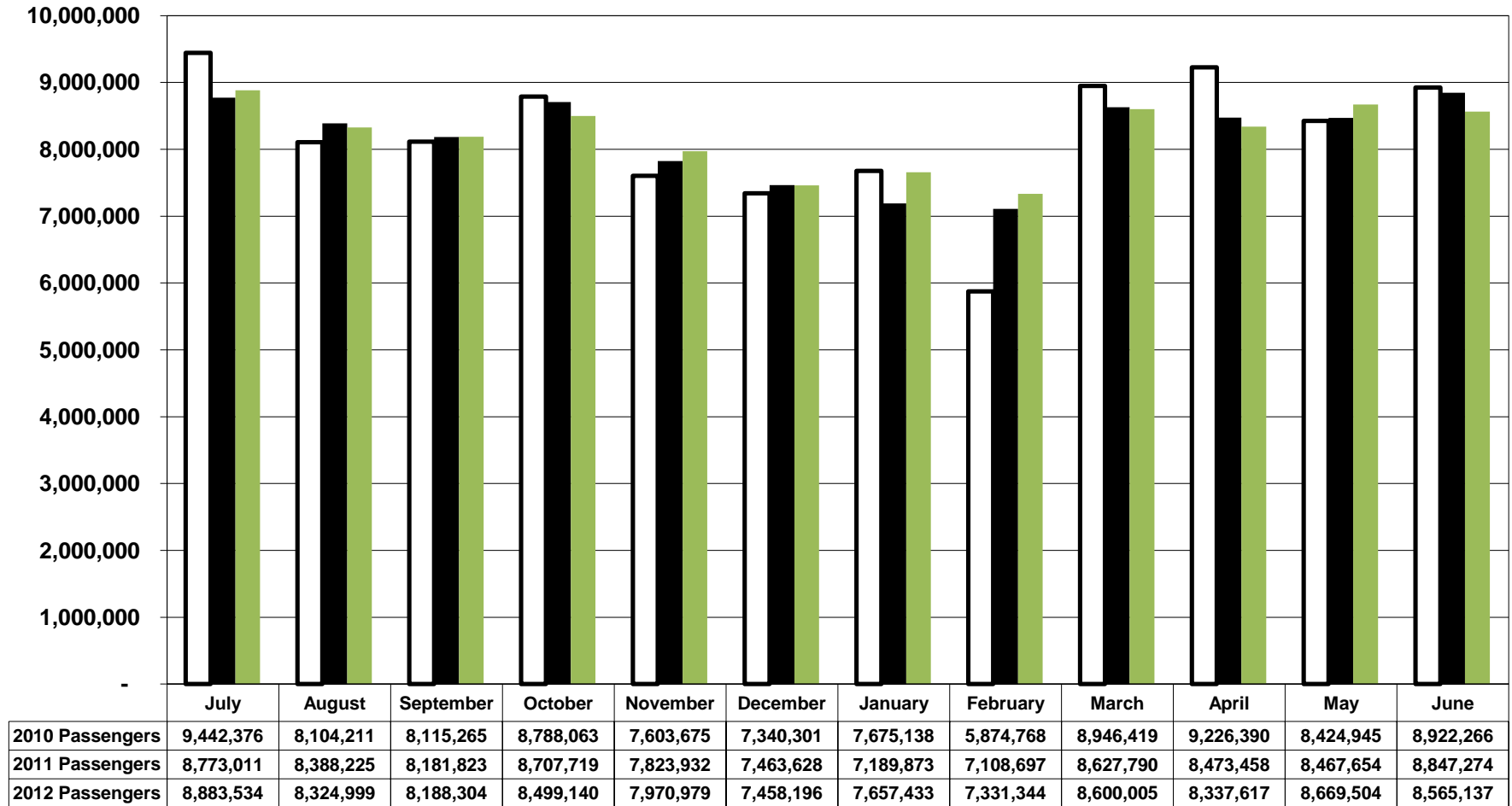
*Van Dorn Street is paid for by Alexandria and Fairfax County on a 50/50 basis

**Figure 4C: FY 2011-2012 Metrorail Ridership Summary
Annual Passenger Trips by Station (Sunday)**

Station	Sunday FY 2011	Sunday FY 2012	Total Change FY 11-12	Percentage Change FY 11-12
Stations in Alexandria*				
Blue/Yellow Line Stations				
Braddock Road	116,598	116,336	-262	-0.2%
Van Dorn Street	99,229	92,290	-6,939	-7.0%
Eisenhower Avenue	69,820	82,852	13,032	18.7%
King Street	274,758	319,223	44,465	16.2%
Total Alexandria:	560,405	610,701	50,296	9.0%
Stations in Arlington				
Orange Line Stations				
East Falls Church	139,919	168,984	29,065	20.8%
Ballston	296,354	283,037	-13,318	-4.5%
Virginia Square	87,830	82,372	-5,458	-6.2%
Clarendon	127,028	134,664	7,635	6.0%
Courthouse	200,610	183,343	-17,268	-8.6%
Rosslyn	470,188	463,529	-6,658	-1.4%
Blue/Yellow Line Stations				
Arlington Cemetery	202,382	195,554	-6,828	-3.4%
Pentagon	150,408	155,465	5,057	3.4%
Pentagon City	733,945	726,841	-7,104	-1.0%
Crystal City	358,017	376,743	18,726	5.2%
National Airport	598,100	583,255	-14,845	-2.5%
Total Arlington:	3,364,783	3,353,787	-10,996	-0.3%
Stations in Fairfax County*				
Orange Line Stations				
Vienna	349,609	313,540	-36,069	-10.3%
Dunn Loring	137,578	121,092	-16,486	-12.0%
West Falls Church	184,661	152,616	-32,045	-17.4%
Blue/Yellow Line Stations				
Huntington	236,858	238,613	1,755	0.7%
Franconia-Springfield	250,061	227,291	-22,770	-9.1%
Total Fairfax:	1,158,767	1,053,152	-105,615	-9.1%
Total Virginia:	5,083,955	5,017,641	-66,314	-1.3%

*Van Dorn Street is paid for by Alexandria and Fairfax County on a 50/50 basis

Figure 5: Metrorail Monthly Northern Virginia Passenger Trips, FY2010 - FY2012



2010 Passengers
 2011 Passengers
 2012 Passengers

Figure 6: Metrorail Annual Northern Virginia Passenger Trips, FY 1996 - 2012

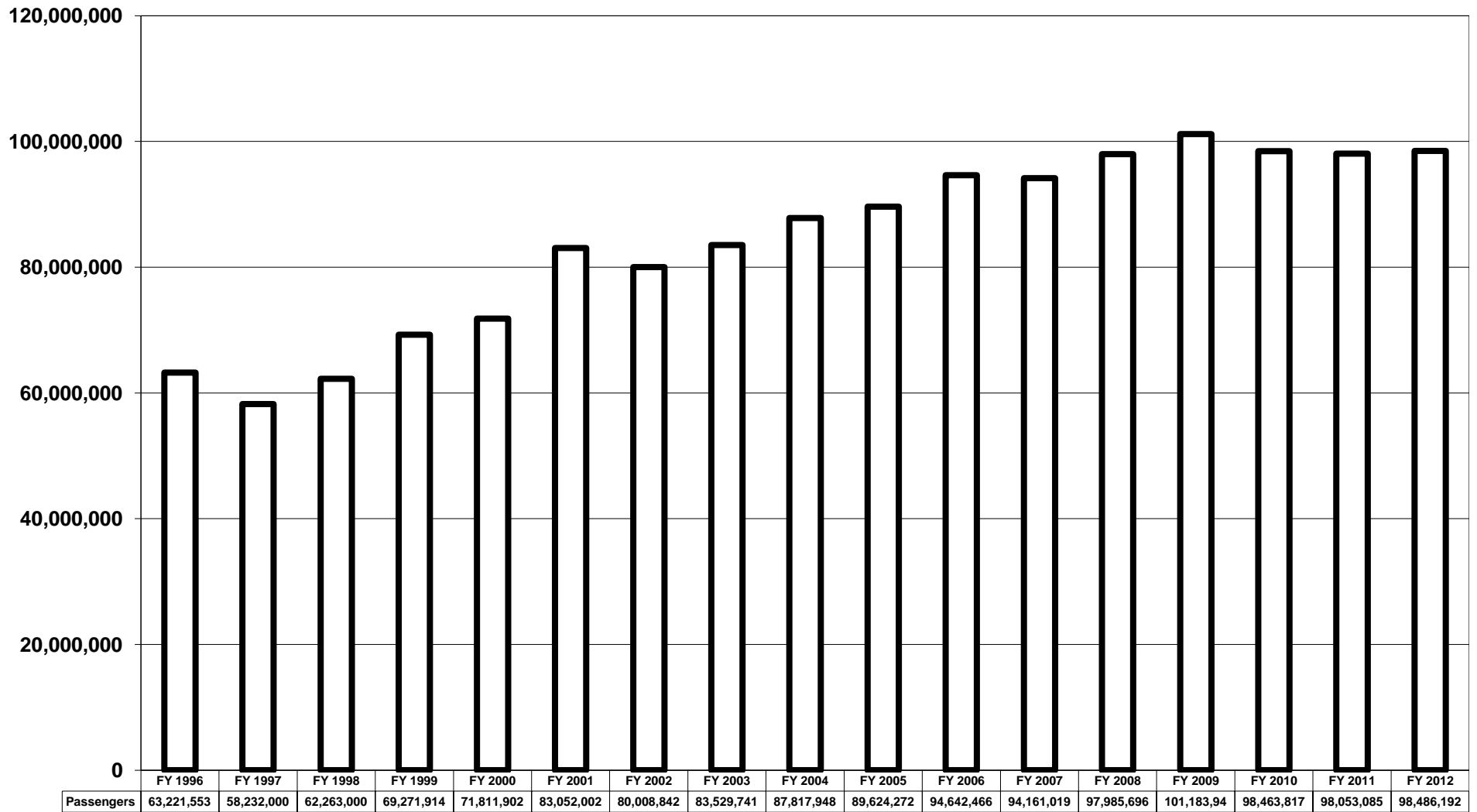
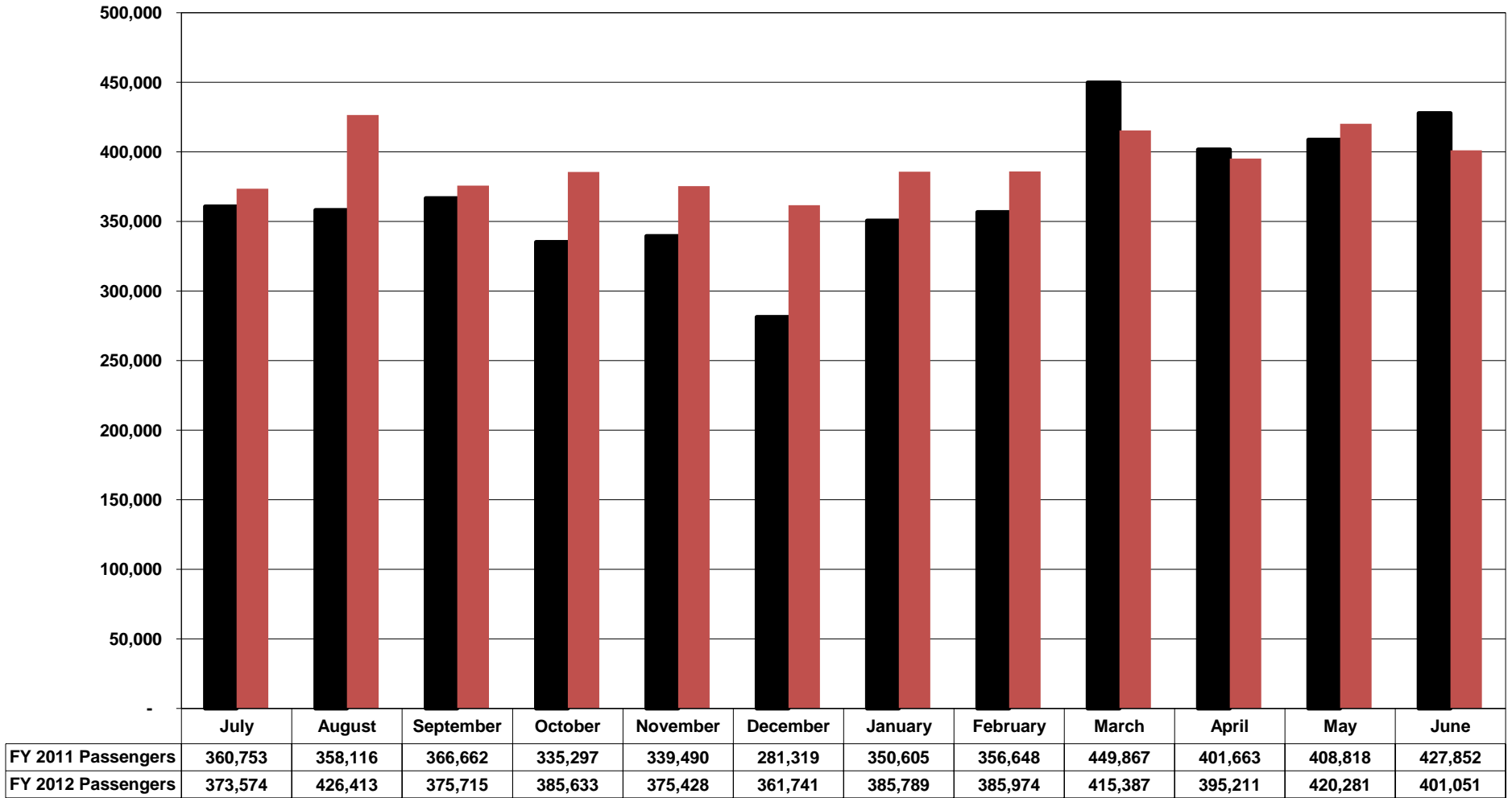


Figure 7: VRE Monthly Passenger Trips, FY 2011 - 2012



■ FY 2011 Passengers ■ FY 2012 Passengers

Figure 8: VRE Annual Passenger Trips, FY 1994 - FY 2012

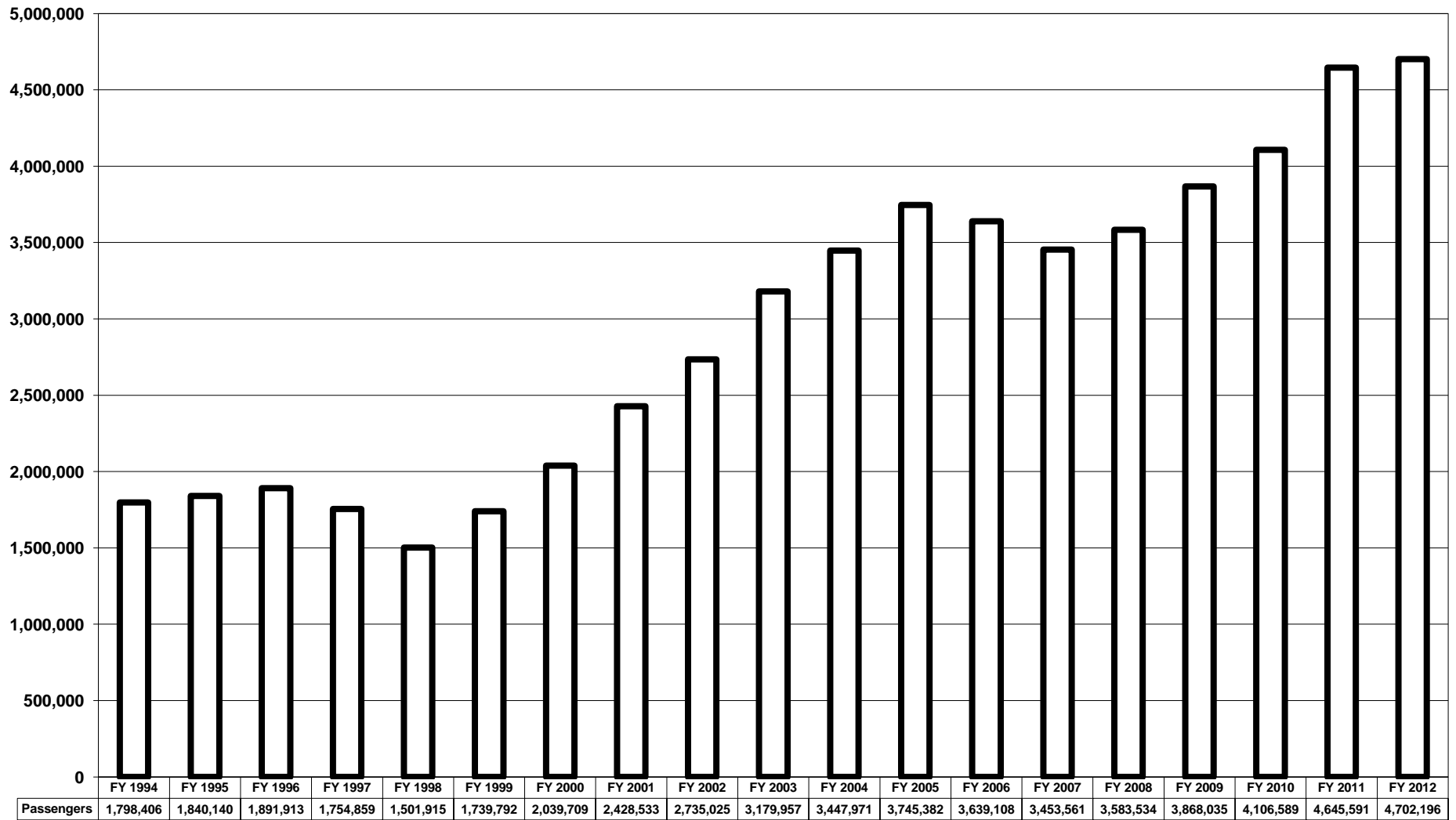


Figure 9: Northern Virginia Metrobus Average Daily Passenger Trips, FY 2011 - FY 2012

	Weekday FY 11	Saturday FY 11	Sunday FY 11	Weekday FY 12	Saturday FY 12	Sunday FY 12
Ballston Terminal Services						
1A,B,C, E,F,Z	4,655	2,853	1,803	4,770	2,565	1,829
2A,B,C,G	3,257	1,764	628	3,389	1,704	654
10B	2,375	1,597	945	2,326	1,488	947
22A,B	1,485	529		1,678	491	
23A,C	3,421	2,116	1,400	3,699	2,063	1,430
25A,C,D,E (also serve Pentagon Terminal)	1,387	378	308	1,384	320	354
25B	1,365	520		1,433	501	
38B	3,645	1,999	1,350	3,760	1,801	1,440
Subtotal	21,590	11,755	6,434	22,439	10,932	6,653
Rosslyn Terminal Services						
3A,B,E	2,382	899	451	2,498	879	489
4A,B,E,H	2,018	689	376	2,083	622	416
5A	<i>Not previously tracked</i>			1,237	718	726
Subtotal	4,399	1,589	827	5,818	2,219	1,631
Pentagon Terminal Services						
7A,B,C,E,F,H,P,W,X, Y	4,755	1,539	1,145	4,948	1,447	1,104
7M	<i>New service in FY12</i>			1,615		
8S,W,X,Z	1,257			1,249		
9A,E	1,668	1,012	644	1,751	996	730
10A,E	2,396	1,385	788	2,457	1,223	785
13F,G	402	114	84		121	85
16A,B,D,E,J,P	5,858	4,198	2,744	5,959	3,742	2,877
16L	197			194		
16G,H,K	3,786	2,428	1,536	3,859	2,243	1,472
17 Series	1,449			1,514		
18 Series	1,511			1,646		
21A,D	549			586		
28F,G	792			648		
29C,E,G,H,X	1,072			1,097		
Subtotal	25,692	10,677	6,940	27,523	9,771	7,053
Other Terminal Services						
REX	3,494	1,912	774	3,544	1,968	915
11Y	426			433		
15K,L	446			491		
15M	153			198		
24T	156			162		
TAGS Shuttle	586			472		
28A,X	5,002	3,843	3,011	5,422	3,732	3,243
29K,N	2,105	1,031		2,389	1,004	
2T	735	493	263	800	460	303
3T	747	293		767	282	
3Y	359			392		
9S	1,409			1,350		
16F	649			924		2
16Y	1,290			1,381		
28T	572			632		
Subtotal	18,128	7,573	4,049	19,356	7,446	4,462
Metrobus Total-Virginia*	69,810	31,593	18,250	75,136	30,369	19,800

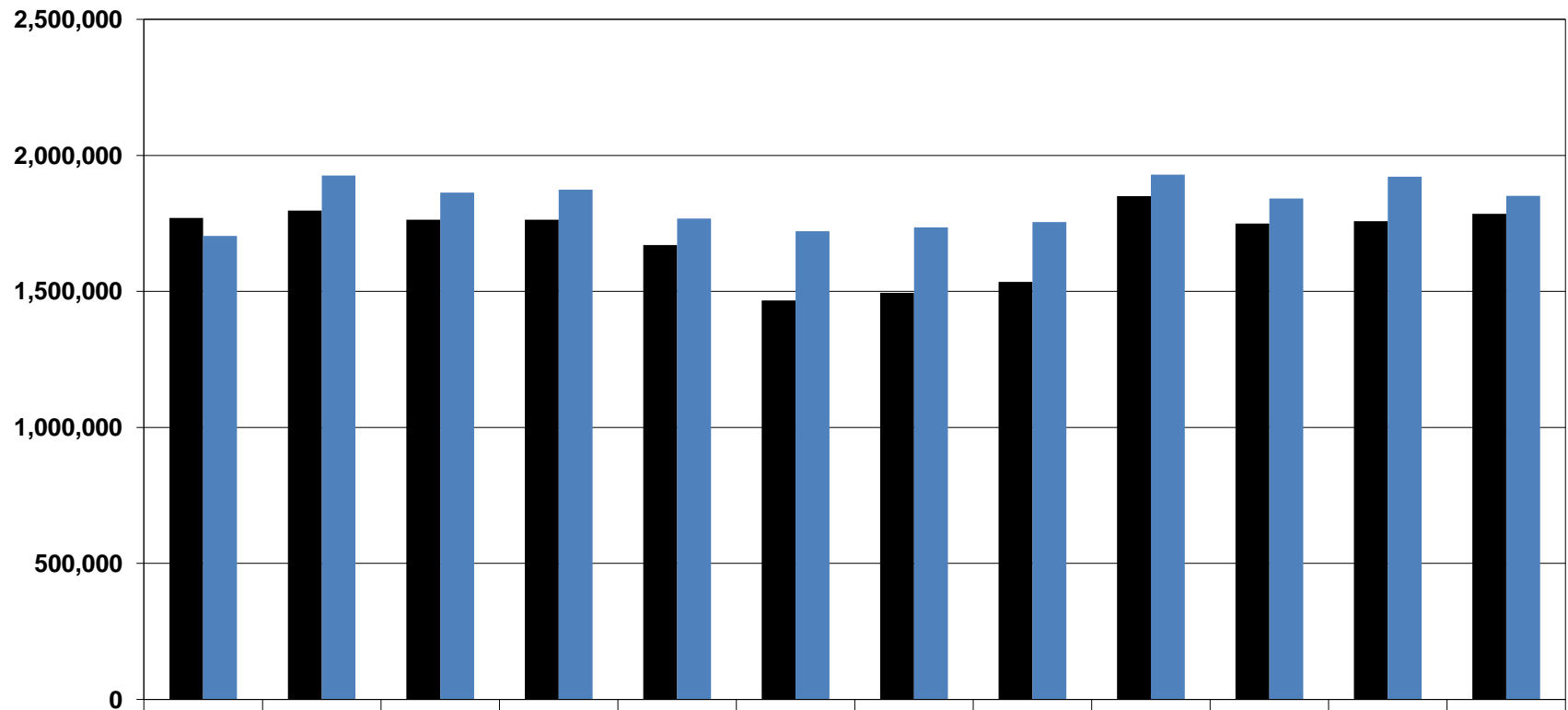
*Holidays included in FY11, but excluded in FY12.

Figure 10: Northern Virginia Metrobus Annual Passenger Trips, FY 2011 - FY 2012

	Weekday FY 11	Saturday FY 11	Sunday FY 11	Weekday FY 12	Saturday FY 12	Sunday FY 12
Ballston Terminal Services						
1A,B,C, E,F,Z	1,177,658	148,359	108,188	1,197,159	148,762	104,266
2A,B,C,G	824,030	91,734	37,651	850,633	98,829	37,263
10B	600,763	83,028	56,708	583,922	86,323	53,980
22A,B	375,771	27,484		421,202	28,454	
23A,C	865,571	110,036	84,001	928,455	119,655	81,482
25A,C,D,E (also serve Pentagon Terminal)	350,943	19,637	18,506	347,332	18,539	20,162
25B	345,356	27,035		359,575	29,057	
38B	922,244	103,930	81,003	943,861	104,438	82,091
Subtotal	5,462,336	611,243	386,057	5,632,139	634,057	379,244
Rosslyn Terminal Services						
3A,B,E	602,581	46,759	27,038	627,058	51,003	27,886
4A,B,E,H	510,462	35,850	22,576	522,799	36,068	23,696
5A	<i>Not previously tracked</i>			310,437	41,654	41,397
Subtotal	1,113,043	82,609	49,614	1,460,294	128,725	92,979
Pentagon Terminal Services						
7A,B,C,E,F,H,P,W,X, Y	1,202,912	79,942	68,616	1,242,039	83,918	62,951
7M	<i>New service in FY12</i>			365,080		
8S,W,X,Z	318,117			313,385		
9A,E	422,044	52,635	38,650	439,426	57,784	41,637
10A,E	606,273	72,034	47,280	616,647	70,908	44,744
13F,G	101,630	5,943	5,043		7,037	4,854
16A,B,D,E,J,P	1,481,958	218,304	164,613	1,495,647	217,033	163,962
16L	49,850			48,819		
16G,H,K	957,862	126,258	92,155	968,643	130,066	83,883
17 Series	366,600			380,096		
18 Series	382,342			413,134		
21A,D	138,851			147,100		
28F,G	200,382			162,590		
29C,E,G,H,X	271,258			275,261		
Subtotal	6,500,079	555,116	416,357	6,867,867	566,746	402,031
Other Terminal Services						
REX	884,016	99,444	46,453	889,441	114,129	52,140
11Y	107,841			108,771		
15K,L	112,817			123,241		
15M	38,777			49,575		
24T	39,524			40,635		
TAGS Shuttle	148,133			118,512		
28A,X	1,265,564	199,849	180,662	1,361,010	216,481	184,823
29K,N	532,508	53,618		599,618	58,215	
2T	186,021	25,639	15,799	200,830	26,695	17,269
3T	189,034	15,249		192,490	16,342	
3Y	90,765			98,323		
9S	356,351			338,857		
16F	164,075			231,903		122
16Y	326,335			346,630		
28T	144,738			158,619		
Subtotal	4,586,499	393,799	242,914	4,858,455	431,862	254,354
Metrobus Total-Virginia*	17,661,957	1,642,767	1,094,942	18,818,755	1,761,390	1,128,608

* Holidays included in FY11, but excluded in FY12.

**Figure 11: Metrobus Northern Virginia Passenger Trips
Monthly Totals, FY2011 - 2012**



	July	August	September	October	November	December	January	February	March	April	May	June
FY 2011 Passengers	1,769,572	1,796,718	1,763,316	1,763,781	1,670,230	1,466,647	1,495,137	1,534,555	1,850,095	1,748,864	1,758,003	1,784,669
FY 2012 Passengers	1,703,893	1,925,386	1,863,064	1,873,445	1,767,458	1,720,991	1,734,820	1,755,266	1,929,379	1,840,992	1,921,636	1,851,143

FY 2011 Passengers
 FY 2012 Passengers

**Figure 12: Metrobus Northern Virginia Annual Passenger Trips,
FY 1996 - FY 2012**

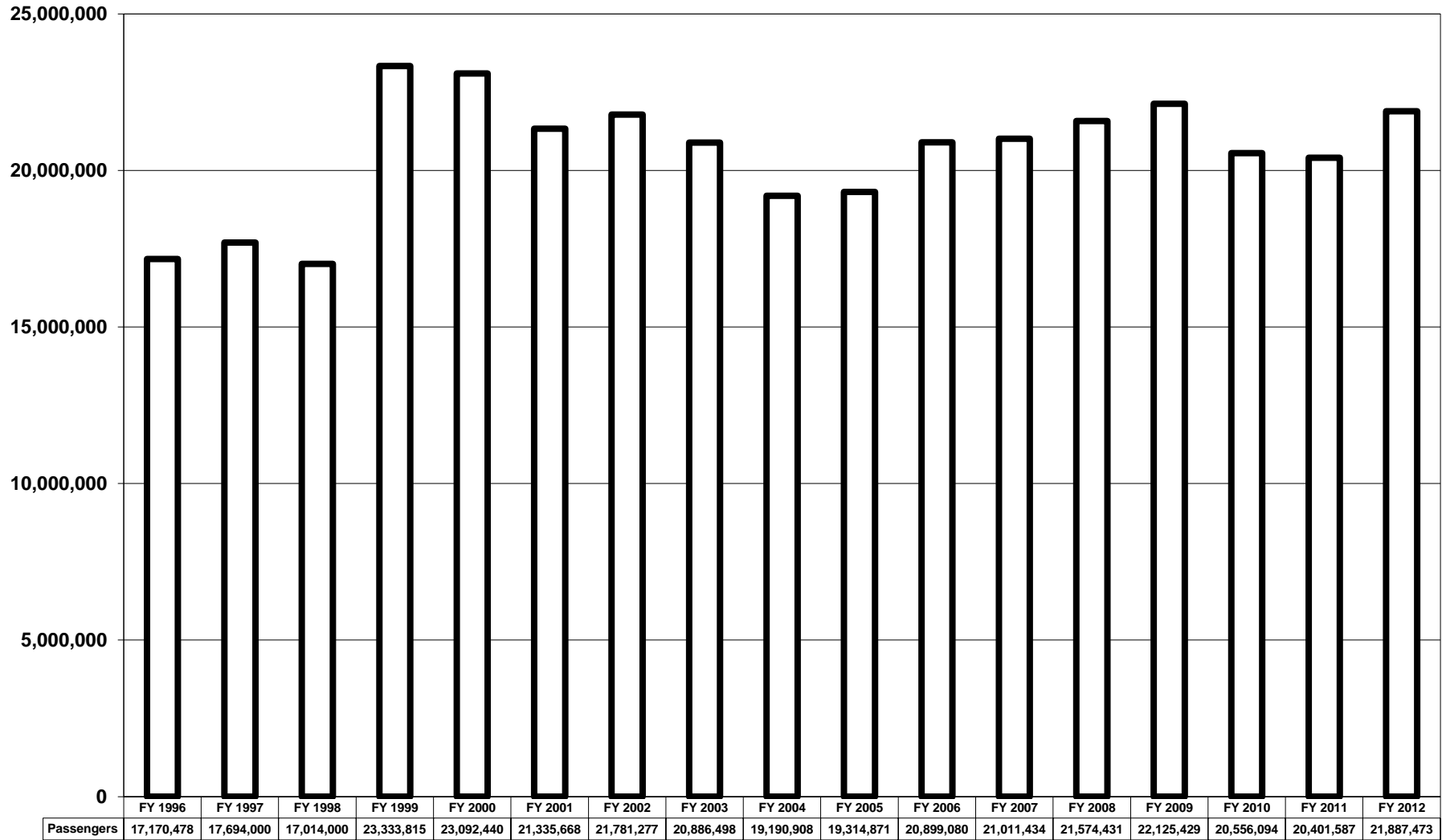


Figure 13: ART Annual Passenger Trips, FY 1994 - FY 2012

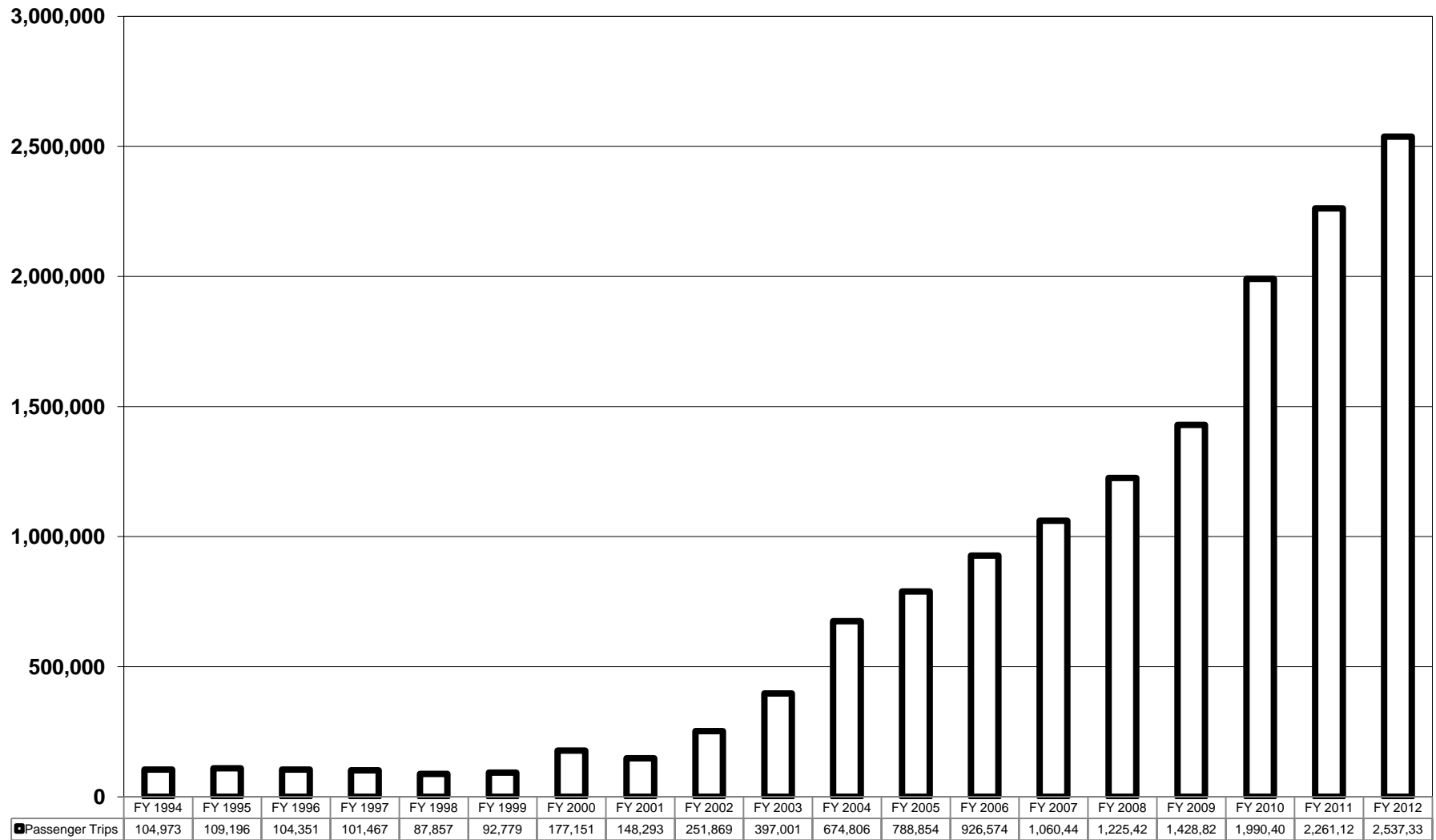


Figure 14: CUE Annual Passenger Trips, FY 1994 - FY 2012

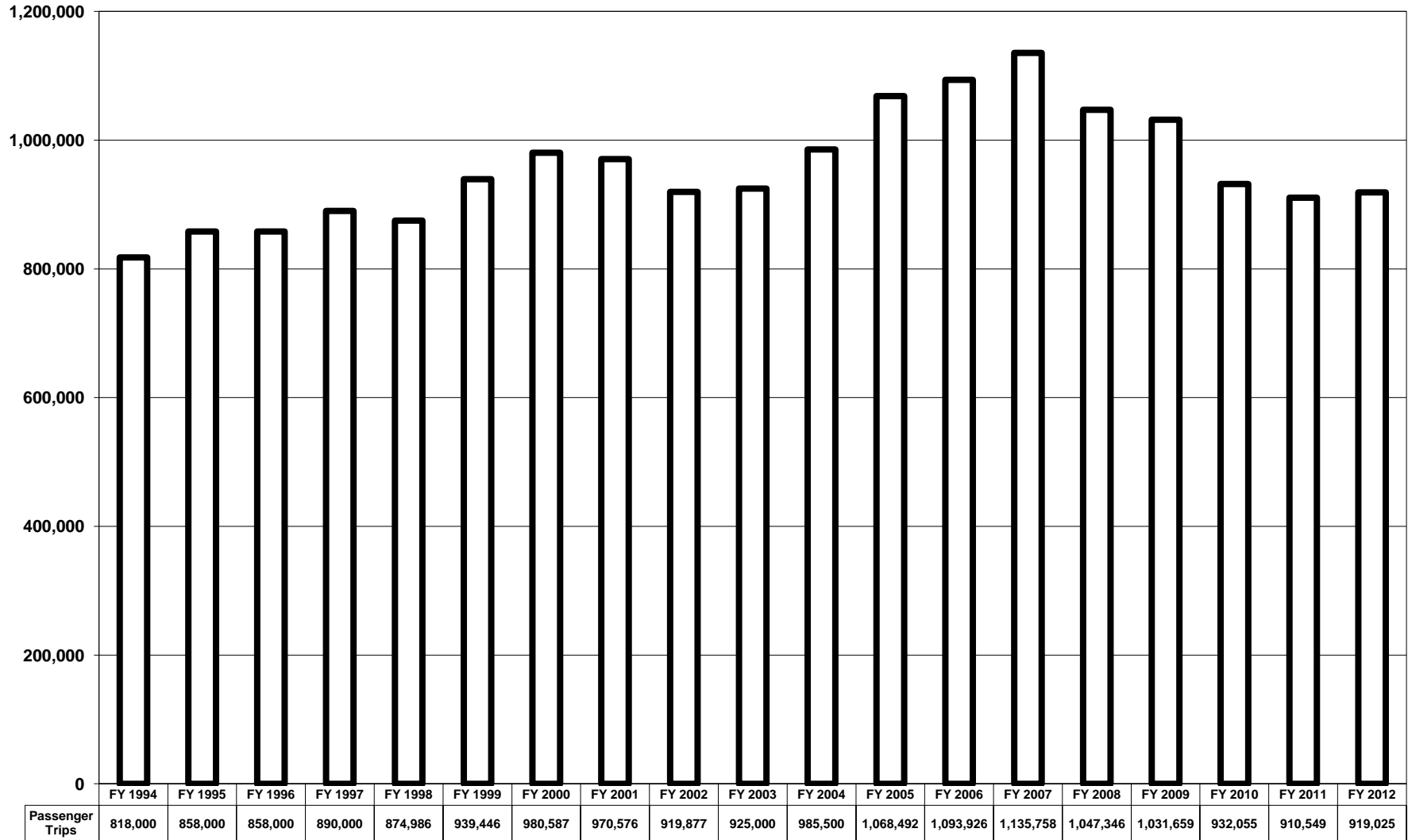
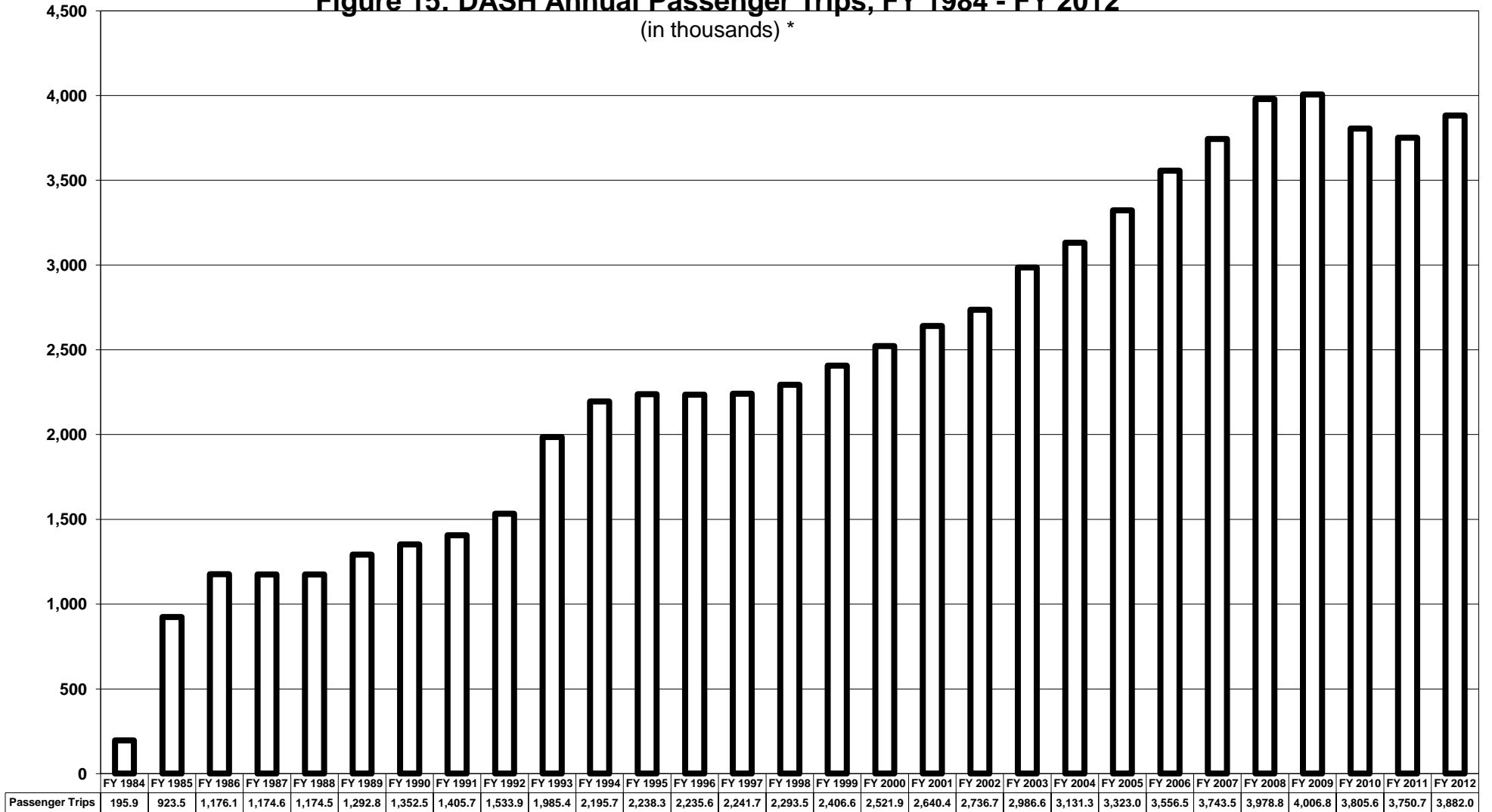


Figure 15: DASH Annual Passenger Trips, FY 1984 - FY 2012

(in thousands) *



* Includes King Street Trolley, April 22-June 2012; reported by purchased transportation provider Martz Group, July 2011-April 21, 2012.

Figure 16: Fairfax Connector Annual Passenger Trips, FY 1994 - FY 2012

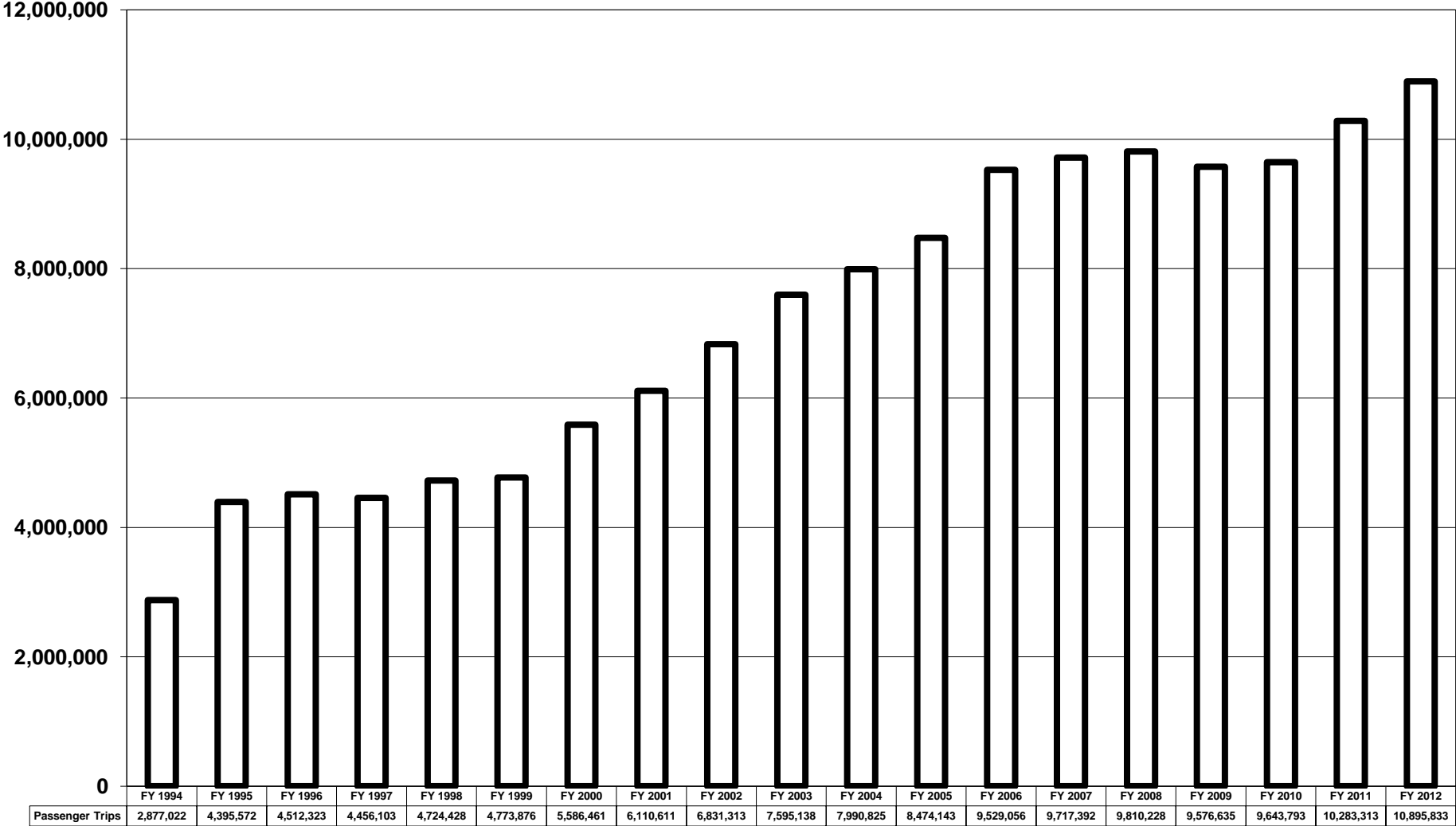


Figure 17: Loudoun County Transit Annual Passenger Trips, FY 1995 - FY 2012

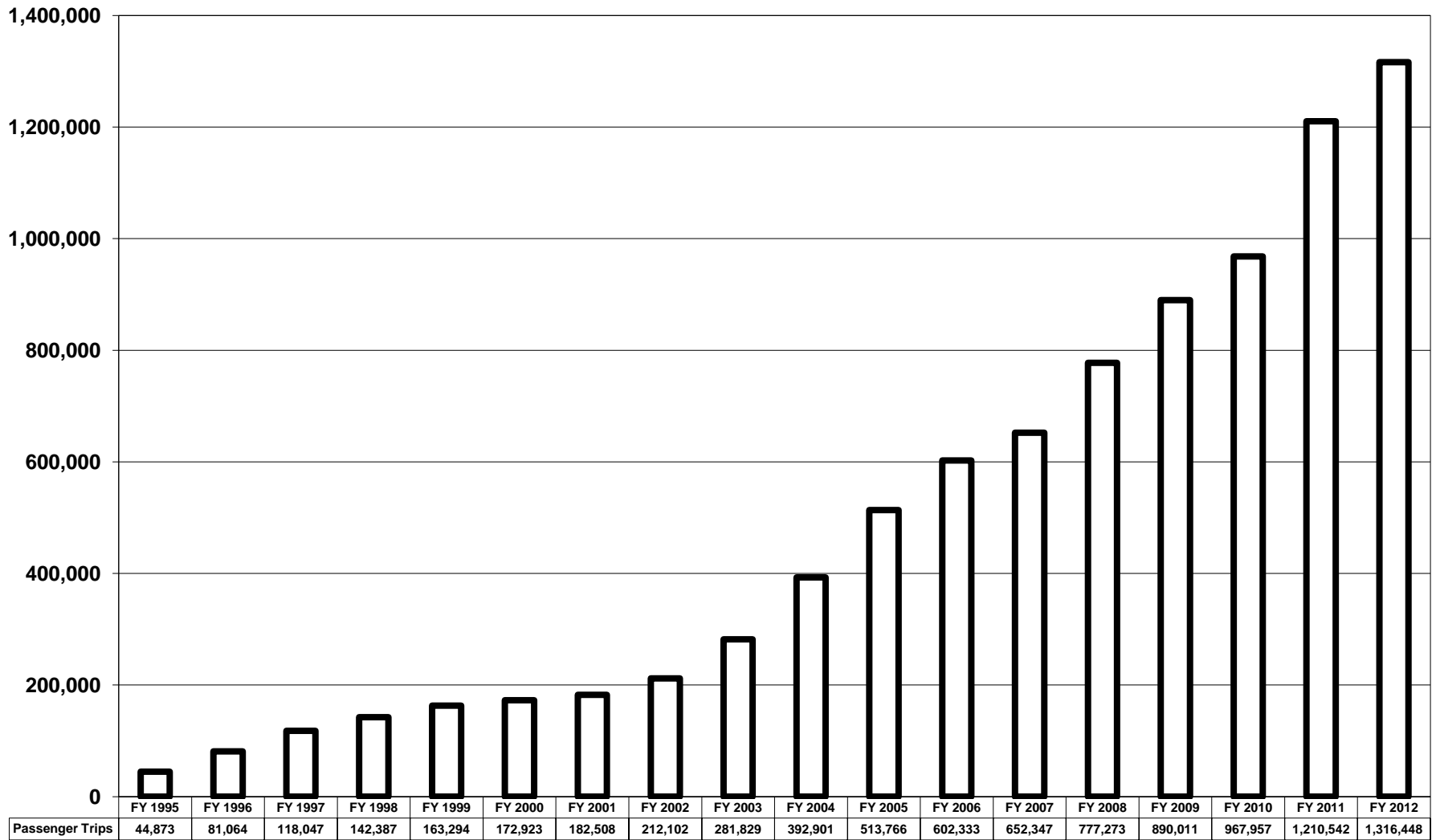


Figure 18: PRTC Omni Ride Annual Passenger Trips, FY 1994 - FY 2012

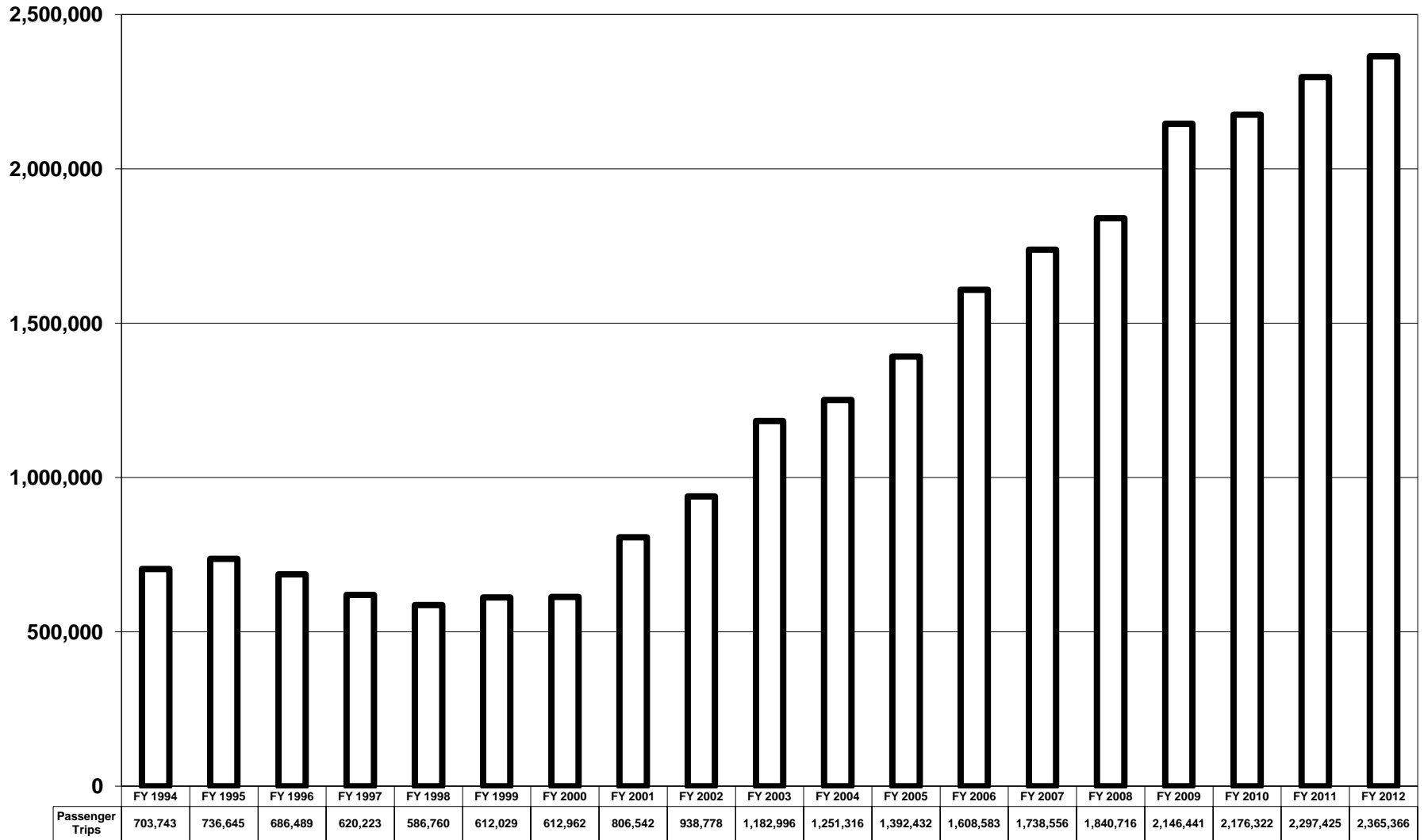


Figure 19: PRTC Omni Link Annual Passenger Trips, FY 1995 - FY 2012

