

**Figure 2: Public Transit Systems Operating in Northern Virginia
Operating Statistics and Performance Indicators, FY 2010**

	Fairfax Connector	Potomac and Rappahannock Transportation Commission		Virginia Railway Express (VRE)	Alexandria DASH	City of Fairfax CUE	Arlington Transit (ART)	Loudoun County Transit	Washington Metro Area Transit Authority	
		Omni Ride	Omni Link						Metrobus (Northern Virginia)	Metrorail (Northern Virginia)
Annual Passenger Trips	9,643,793	2,176,322	1,000,027	4,106,589	3,805,551	932,055	1,990,402	967,957	20,556,094	98,463,817
Vehicle Miles	9,450,711	2,155,742	809,419	2,094,830	1,562,437	447,232	874,936	2,330,625	12,841,331	23,466,873
Passenger Miles	78,925,974	49,837,774	5,230,841	120,532,093	10,802,156	3,879,354	3,383,683	32,145,456	65,327,011	560,672,500
Fleet Size	249	107	22	120	63	12	39	51	1,482	1,128
Average Age of Fleet (years)	6.7	6.5	5.5	20	8.8	5.0	4.4	5	8.7	20
Average Weekday Boardings	34,356	8,602	3,701	16,673	13,544	3,331	7,109	3,997		327,304
Average Trip Length (miles)	8.18	22.90	5.23	29.35	2.84	4.16	1.70	33.21	3.18	5.69
On Time Performance	93%	<i>Not Available</i>		84.4%	93.0%	95.0%	98.0%	95.0%	75.0%	89.2%
Operating Costs	\$54,547,704	\$15,243,567	\$8,792,536	\$52,594,511	\$11,433,000	\$2,850,899	\$6,583,860	\$6,461,873	\$115,961,134	\$226,254,175

Source: Operating Information obtained directly from individual transit systems

* Estimated based on WMATA systemwide data

** WMATA systemwide data

Figure 5: Northern Virginia Average Weekday and Annual Public Transit Passenger Trips, FY 2009 - 2010

System	Average Weekday Passenger Trips, FY 2009	Average Weekday Passenger Trips, FY 2010	Annual Passenger Trips, FY 2009	Annual Passenger Trips, FY 2010
Metrorail Virginia	334,048	327,304	101,183,949	98,463,817
Metrobus Virginia	79,061	72,079	22,125,429	20,556,094
Fairfax Connector	30,278	34,356	9,576,635	9,643,793
VRE	15,754	16,673	3,868,035	4,106,589
DASH	14,033	13,544	4,006,825	3,805,551
PRTC Omni Ride	8,817	8,602	2,146,441	2,176,322
PRTC Omni Link	3,821	3,701	1,025,633	1,000,027
CUE	3,651	3,331	1,031,659	932,055
ART	4,926	7,109	1,428,827	1,990,402
Loudoun County Transit	3,614	3,997	890,011	967,957
Total	498,003	490,696	147,283,444	143,642,607

Note: Ridership on WMATA reimbursable services such as REX, PikeRide, and TAGS is included in the Metrobus Virginia ridership figure.

447232

**Figure 7: FY2009-FY2010 Metrorail Ridership Summary
Average Daily Passenger Trips by Station**

Station	Weekday FY 2009	Saturday FY 2009	Sunday FY 2009	Weekday FY 2010	Saturday FY 2010	Sunday FY 2010
Stations in Alexandria*						
Blue/Yellow Line Stations						
Braddock Road	8,841	3,881	2,316	8,497	3,622	2,202
Van Dorn Street	7,356	3,560	2,099	7,021	3,343	1,988
Eisenhower Avenue	4,514	2,393	1,240	4,488	2,289	1,246
King Street	18,239	9,493	6,126	447,232	9,016	5,965
Total Alexandria:	38,949	19,325	11,781	467,237	18,270	11,401
Stations in Arlington						
Orange Line Stations						
East Falls Church	8,107	4,714	2,825	7,764	4,659	2,818
Ballston	24,179	11,191	6,459	23,619	10,839	6,304
Virginia Square	8,006	3,140	1,806	7,885	3,041	1,763
Clarendon	8,392	5,682	3,125	8,137	5,470	2,935
Courthouse	14,197	6,886	4,097	14,313	7,087	4,208
Rosslyn	33,326	13,299	8,965	32,903	13,242	9,362
Blue/Yellow Line Stations						
Arlington Cemetery	3,020	4,722	4,313	2,982	4,870	4,258
Pentagon	31,264	4,947	3,448	31,010	4,975	3,679
Pentagon City	31,827	23,309	14,247	31,648	22,688	13,755
Crystal City	28,628	10,837	6,929	27,844	10,490	6,729
National Airport	11,289	7,732	10,970	11,295	7,142	10,549
Total Arlington:	202,235	96,458	67,184	199,401	94,502	66,360
Stations in Fairfax County*						
Orange Line Stations						
Vienna	26,559	12,720	7,288	26,254	12,077	6,542
Dunn Loring	10,314	5,109	3,002	10,051	4,737	2,642
West Falls Church	20,295	6,209	4,240	19,953	5,400	3,423
Blue/Yellow Line Stations						
Huntington	16,797	6,695	4,260	16,379	6,428	4,083
Franconia-Springfield	18,899	9,252	5,381	18,393	8,572	4,838
Total Fairfax:	92,864	39,985	24,172	91,030	37,214	21,529
Total Virginia:	334,048	155,769	103,136	757,668	149,986	99,290

*Van Dorn Street is paid for by Alexandria and Fairfax County on a 50/50 basis

**Figure 7A: FY2009-2010 Metrorail Ridership Summary
Average Daily Passenger Trips by Station (Weekday)**

Station	Weekday FY 2009	Weekday FY 2010	Total Change FY 09-10	Percentage Change FY 09-10
Stations in Alexandria*				
Blue/Yellow Line Stations				
Braddock Road	8,841	8,497	-344	-4%
Van Dorn Street	7,356	7,021	-335	-5%
Eisenhower Avenue	4,514	4,488	-26	-1%
King Street	18,239	16,868	-1,371	44723200%
Total Alexandria:	38,949	36,873	-2,076	-5%
Stations in Arlington				
Orange Line Stations				
East Falls Church	8,107	7,764	-343	-4%
Ballston	24,179	23,619	-559	-2%
Virginia Square	8,006	7,885	-121	-2%
Clarendon	8,392	8,137	-255	-3%
Courthouse	14,197	14,313	115	1%
Rosslyn	33,326	32,903	-423	-1%
Blue/Yellow Line Stations				
Arlington Cemetery	3,020	2,982	-38	-1%
Pentagon	31,264	31,010	-254	-1%
Pentagon City	31,827	31,648	-179	-1%
Crystal City	28,628	27,844	-784	-3%
National Airport	11,289	11,295	7	0%
Total Arlington:	202,235	199,401	-2,835	-1%
Stations in Fairfax County*				
Orange Line Stations				
Vienna	26,559	26,254	-305	-1%
Dunn Loring	10,314	10,051	-263	-3%
West Falls Church	20,295	19,953	-342	-2%
Blue/Yellow Line Stations				
Huntington	16,797	16,379	-417	-2%
Franconia-Springfield	18,899	18,393	-506	-3%
Total Fairfax:	92,864	91,030	-1,834	-2%
Total Virginia:	334,048	327,304	-6,744	-2%

*Van Dorn Street is paid for by Alexandria and Fairfax County on a 50/50 basis

**Figure 7B: FY2009- 2010 Metrorail Ridership Summary
Average Daily Passenger Trips by Station (Saturday)**

Station	Saturday FY 2009	Saturday FY 2010	Total Change FY 09-10	Percentage Change FY 09-10
Stations in Alexandria*				
Blue/Yellow Line Stations				
Braddock Road	3,881	3,622	-258	-7%
Van Dorn Street	3,560	3,343	-216	-6%
Eisenhower Avenue	2,393	2,289	-104	-4%
King Street	9,493	9,016	-477	44723200%
Total Alexandria:	19,325	18,270	-1,056	-5%
Stations in Arlington				
Orange Line Stations				
East Falls Church	4,714	4,659	-55	-1%
Ballston	11,191	10,839	-353	-3%
Virginia Square	3,140	3,041	-99	-3%
Clarendon	5,682	5,470	-212	-4%
Courthouse	6,886	7,087	201	3%
Rosslyn	13,299	13,242	-57	0%
Blue/Yellow Line Stations				
Arlington Cemetery	4,722	4,870	148	3%
Pentagon	4,947	4,975	29	1%
Pentagon City	23,309	22,688	-621	-3%
Crystal City	10,837	10,490	-348	-3%
National Airport	7,732	7,142	-590	-8%
Total Arlington:	96,458	94,502	-1,956	-2%
Stations in Fairfax County*				
Orange Line Stations				
Vienna	12,720	12,077	-644	-5%
Dunn Loring	5,109	4,737	-372	-7%
West Falls Church	6,209	5,400	-809	-13%
Blue/Yellow Line Stations				
Huntington	6,695	6,428	-266	-4%
Franconia-Springfield	9,252	8,572	-681	-7%
Total Fairfax:	39,985	37,214	-2,771	-7%
Total Virginia:	155,769	149,986	-5,783	-4%

*Van Dorn Street is paid for by Alexandria and Fairfax County on a 50/50 basis

**Figure 7C: FY2009 - 2010 Metrorail Ridership Summary
Average Daily Passenger Trips by Station (Sunday)**

Station	Sunday FY 2009	Sunday FY 2010	Total Change FY 09-10	Percentage Change FY 09-10
Stations in Alexandria*				
Blue/Yellow Line Stations				
Braddock Road	2,316	2,202	-114	-5%
Van Dorn Street	2,099	1,988	-111	-5%
Eisenhower Avenue	1,240	1,246	6	1%
King Street	6,126	5,965	-161	44723200%
Total Alexandria:	11,781	11,401	-380	-3%
Stations in Arlington				
Orange Line Stations				
East Falls Church	2,825	2,818	-7	0%
Ballston	6,459	6,304	-154	-2%
Virginia Square	1,806	1,763	-43	-2%
Clarendon	3,125	2,935	-190	-6%
Courthouse	4,097	4,208	111	3%
Rosslyn	8,965	9,362	397	4%
Blue/Yellow Line Stations				
Arlington Cemetery	4,313	4,258	-55	-1%
Pentagon	3,448	3,679	231	7%
Pentagon City	14,247	13,755	-492	-3%
Crystal City	6,929	6,729	-200	-3%
National Airport	10,970	10,549	-421	-4%
Total Arlington:	67,184	66,360	-824	-1%
Stations in Fairfax County*				
Orange Line Stations				
Vienna	7,288	6,542	-746	-10%
Dunn Loring	3,002	2,642	-360	-12%
West Falls Church	4,240	3,423	-817	-19%
Blue/Yellow Line Stations				
Huntington	4,260	4,083	-178	-4%
Franconia-Springfield	5,381	4,838	-543	-10%
Total Fairfax:	24,172	21,529	-2,643	-11%
Total Virginia:	103,136	99,290	-3,846	-4%

*Van Dorn Street is paid for by Alexandria and Fairfax County on a 50/50 basis

**Figure 8: FY2008 - 2009 Metrorail Ridership Summary
Annual Passenger Trips by Station**

Station	Weekday FY 2009	Saturday FY 2009	Sunday FY 2009	Weekday FY 2010	Saturday FY 2010	Sunday FY 2010
Stations in Alexandria*						
Blue/Yellow Line Stations						
Braddock Road	2,308,130	201,395	120,151	2,221,249	187,810	113,846
Van Dorn Street	1,921,739	184,598	108,835	1,836,318	173,024	102,352
Eisenhower Avenue	1,178,641	124,039	64,463	447,232	118,928	64,361
King Street	4,764,892	491,999	318,713	4,412,213	466,936	307,850
Total Alexandria:	10,173,402	1,002,031	612,162	8,917,012	946,698	588,408
Stations in Arlington						
Orange Line Stations						
East Falls Church	2,116,861	244,665	146,325	2,030,051	240,577	145,908
Ballston	6,311,539	580,443	335,087	6,170,629	561,555	325,745
Virginia Square	2,089,345	162,969	93,590	2,059,542	157,280	90,884
Clarendon	2,190,729	295,183	162,096	2,125,610	283,975	151,920
Courthouse	3,705,430	357,483	212,157	3,738,370	367,009	216,542
Rosslyn	8,700,032	688,932	463,257	8,597,699	684,555	478,982
Blue/Yellow Line Stations						
Arlington Cemetery	793,616	243,468	222,104	785,547	250,336	219,354
Pentagon	8,161,289	256,529	176,877	8,101,401	256,485	187,017
Pentagon City	8,314,751	1,209,576	739,677	8,280,512	1,178,140	712,173
Crystal City	7,474,900	559,775	358,733	7,277,995	544,067	346,379
National Airport	2,949,834	403,013	570,847	2,956,186	371,577	550,747
Total Arlington:	52,808,325	5,002,035	3,480,750	52,123,542	4,895,557	3,425,649
Stations in Fairfax County*						
Orange Line Stations						
Vienna	6,934,080	660,072	377,992	6,867,724	622,416	336,966
Dunn Loring	2,693,857	264,671	155,671	2,629,375	244,378	135,886
West Falls Church	5,299,690	350,278	221,768	5,218,375	280,050	176,339
Blue/Yellow Line Stations						
Huntington	4,385,050	347,518	221,213	4,282,746	332,304	211,527
Franconia-Springfield	4,937,079	479,825	278,582	4,811,048	441,630	249,800
Total Fairfax:	24,249,756	2,102,364	1,255,225	23,809,268	1,920,779	1,110,518
TOTAL VIRGINIA:	87,231,483	8,106,430	5,348,137	84,849,822	7,763,033	5,124,575

*Van Dorn Street is paid for by Alexandria and Fairfax County on a 50/50 basis

**Figure 8A: FY2009 - 2010 Metrorail Ridership Summary
Annual Passenger Trips by Station (Weekday)**

Station	Weekday FY 2009	Weekday FY 2010	Total Change FY 09-10	Percentage Change FY 09-10
Stations in Alexandria*				
Blue/Yellow Line Stations				
Braddock Road	2,308,130	2,221,249	-86,881	-4%
Van Dorn Street	1,921,739	1,836,318	-85,421	-4%
Eisenhower Avenue	1,178,641	1,173,619	-5,023	0%
King Street	4,764,892	4,412,213	-352,679	44723200%
Total Alexandria:	10,173,402	9,643,399	-530,004	-5%
Stations in Arlington				
Orange Line Stations				
East Falls Church	2,116,861	2,030,051	-86,810	-4%
Ballston	6,311,539	6,170,629	-140,910	-2%
Virginia Square	2,089,345	2,059,542	-29,804	-1%
Clarendon	2,190,729	2,125,610	-65,119	-3%
Courthouse	3,705,430	3,738,370	32,940	1%
Rosslyn	8,700,032	8,597,699	-102,333	-1%
Blue/Yellow Line Stations				
Arlington Cemetery	793,616	785,547	-8,069	-1%
Pentagon	8,161,289	8,101,401	-59,887	-1%
Pentagon City	8,314,751	8,280,512	-34,238	0%
Crystal City	7,474,900	7,277,995	-196,904	-3%
National Airport	2,949,834	2,956,186	6,352	0%
Total Arlington:	52,808,325	52,123,542	-684,783	-1%
Stations in Fairfax County*				
Orange Line Stations				
Vienna	6,934,080	6,867,724	-66,356	-1%
Dunn Loring	2,693,857	2,629,375	-64,482	-2%
West Falls Church	5,299,690	5,218,375	-81,315	-2%
Blue/Yellow Line Stations				
Huntington	4,385,050	4,282,746	-102,304	-2%
Franconia-Springfield	4,937,079	4,811,048	-126,031	-3%
Total Fairfax:	24,249,756	23,809,268	-440,488	-2%
Total Virginia:	87,231,483	85,576,208	-1,655,275	-2%

*Van Dorn Street is paid for by Alexandria and Fairfax County on a 50/50 basis

**Figure 8B: FY2009 - 2010 Metrorail Ridership Summary
Annual Passenger Trips by Station (Saturday)**

Station	Saturday FY 2009	Saturday FY 2010	Total Change FY 09-10	Percentage Change FY 09-10
Stations in Alexandria*				
Blue/Yellow Line Stations				
Braddock Road	201,395	187,810	-13,585	-7%
Van Dorn Street	184,598	173,024	-11,574	-6%
Eisenhower Avenue	124,039	118,928	-5,111	-4%
King Street	491,999	466,936	-25,063	44723200%
Total Alexandria:	1,002,031	946,698	-55,333	-6%
Stations in Arlington				
Orange Line Stations				
East Falls Church	244,665	240,577	-4,087	-2%
Ballston	580,443	561,555	-18,888	-3%
Virginia Square	162,969	157,280	-5,689	-3%
Clarendon	295,183	283,975	-11,207	-4%
Courthouse	357,483	367,009	9,527	3%
Rosslyn	688,932	684,555	-4,377	-1%
Blue/Yellow Line Stations				
Arlington Cemetery	243,468	250,336	6,868	3%
Pentagon	256,529	256,485	-44	0%
Pentagon City	1,209,576	1,178,140	-31,436	-3%
Crystal City	559,775	544,067	-15,707	-3%
National Airport	403,013	371,577	-31,436	-8%
Total Arlington:	5,002,035	4,895,557	-106,478	-2%
Stations in Fairfax County*				
Orange Line Stations				
Vienna	660,072	622,416	-37,655	-6%
Dunn Loring	264,671	244,378	-20,292	-8%
West Falls Church	350,278	280,050	-70,228	-20%
Blue/Yellow Line Stations				
Huntington	347,518	332,304	-15,214	-4%
Franconia-Springfield	479,825	441,630	-38,195	-8%
Total Fairfax:	2,102,364	1,920,779	-181,585	-9%
Total Virginia:	8,106,430	7,763,033	-343,396	-4%

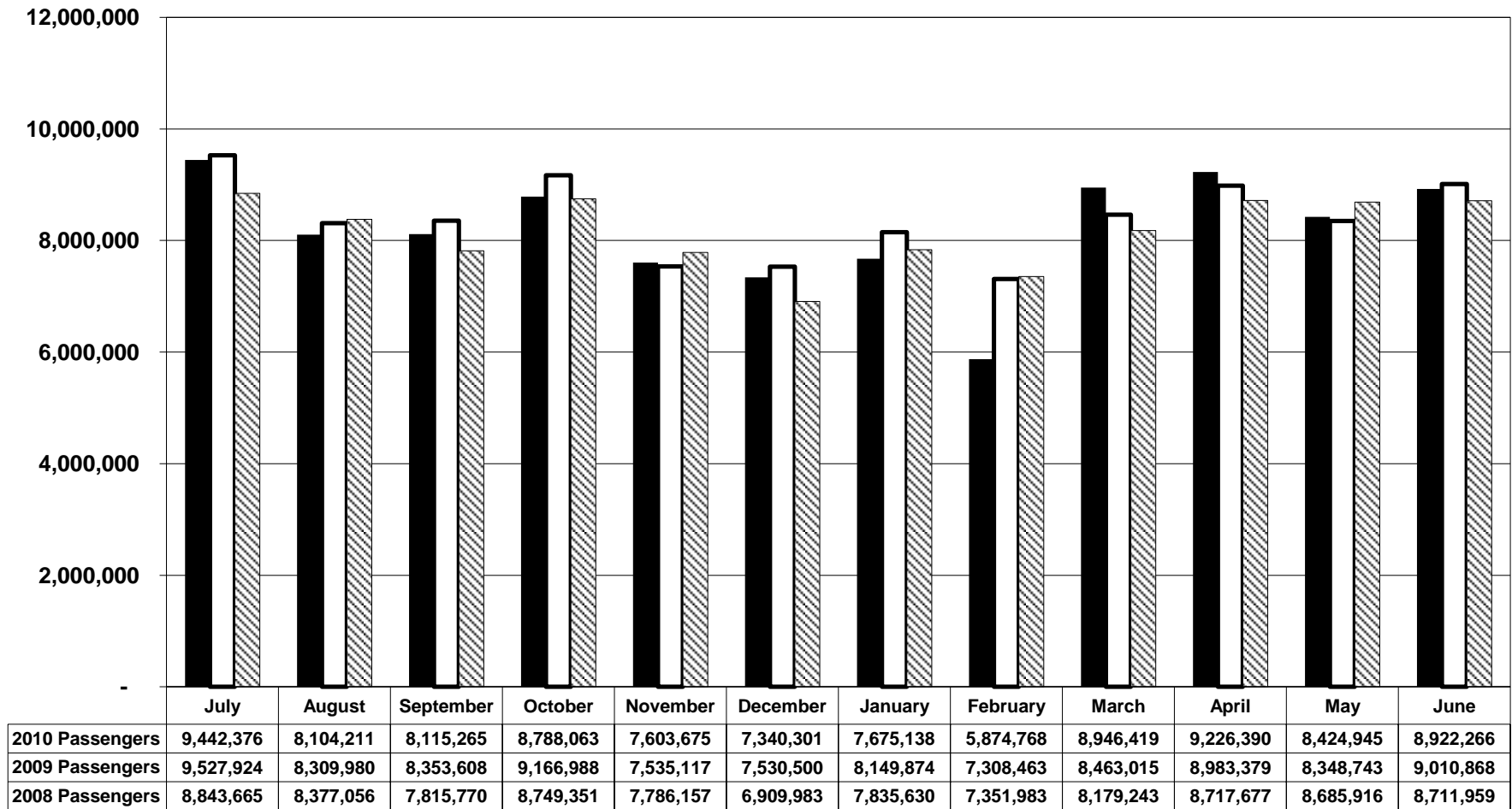
*Van Dorn Street is paid for by Alexandria and Fairfax County on a 50/50 basis

**Figure 8C: FY2009 - 2010 Metrorail Ridership Summary
Annual Passenger Trips by Station (Sunday)**

Station	Sunday FY 2009	Sunday FY 2010	Total Change FY 09-10	Percentage Change FY 09-10
Stations in Alexandria*				
Blue/Yellow Line Stations				
Braddock Road	120,151	113,846	-6,306	-5%
Van Dorn Street	108,835	102,352	-6,482	-6%
Eisenhower Avenue	64,463	64,361	-102	0%
King Street	318,713	307,850	-10,863	44723200%
Total Alexandria:	612,162	588,408	-23,753	-4%
Stations in Arlington				
Orange Line Stations				
East Falls Church	146,325	145,908	-417	0%
Ballston	335,087	325,745	-9,342	-3%
Virginia Square	93,590	90,884	-2,706	-3%
Clarendon	162,096	151,920	-10,176	-6%
Courthouse	212,157	216,542	4,385	2%
Rosslyn	463,257	478,982	15,725	3%
Blue/Yellow Line Stations				
Arlington Cemetery	222,104	219,354	-2,750	-1%
Pentagon	176,877	187,017	10,139	6%
Pentagon City	739,677	712,173	-27,504	-4%
Crystal City	358,733	346,379	-12,354	-3%
National Airport	570,847	550,747	-20,100	-4%
Total Arlington:	3,480,750	3,425,649	-55,101	-2%
Stations in Fairfax County*				
Orange Line Stations				
Vienna	377,992	336,966	-41,026	-11%
Dunn Loring	155,671	135,886	-19,785	-13%
West Falls Church	221,768	176,339	-45,428	-20%
Blue/Yellow Line Stations				
Huntington	221,213	211,527	-9,686	-4%
Franconia-Springfield	278,582	249,800	-28,782	-10%
Total Fairfax:	1,255,225	1,110,518	-144,707	-12%
Total Virginia:	5,348,137	5,124,575	-223,562	-4%

*Van Dorn Street is paid for by Alexandria and Fairfax County on a 50/50 basis

Figure 9: Metrorail Monthly Northern Virginia Passenger Trips, FY2008 - FY2010



2010 Passengers
 2009 Passengers
 2008 Passengers

Figure 10: Metrorail Annual Northern Virginia Passenger Trips, FY 1996 - 2010

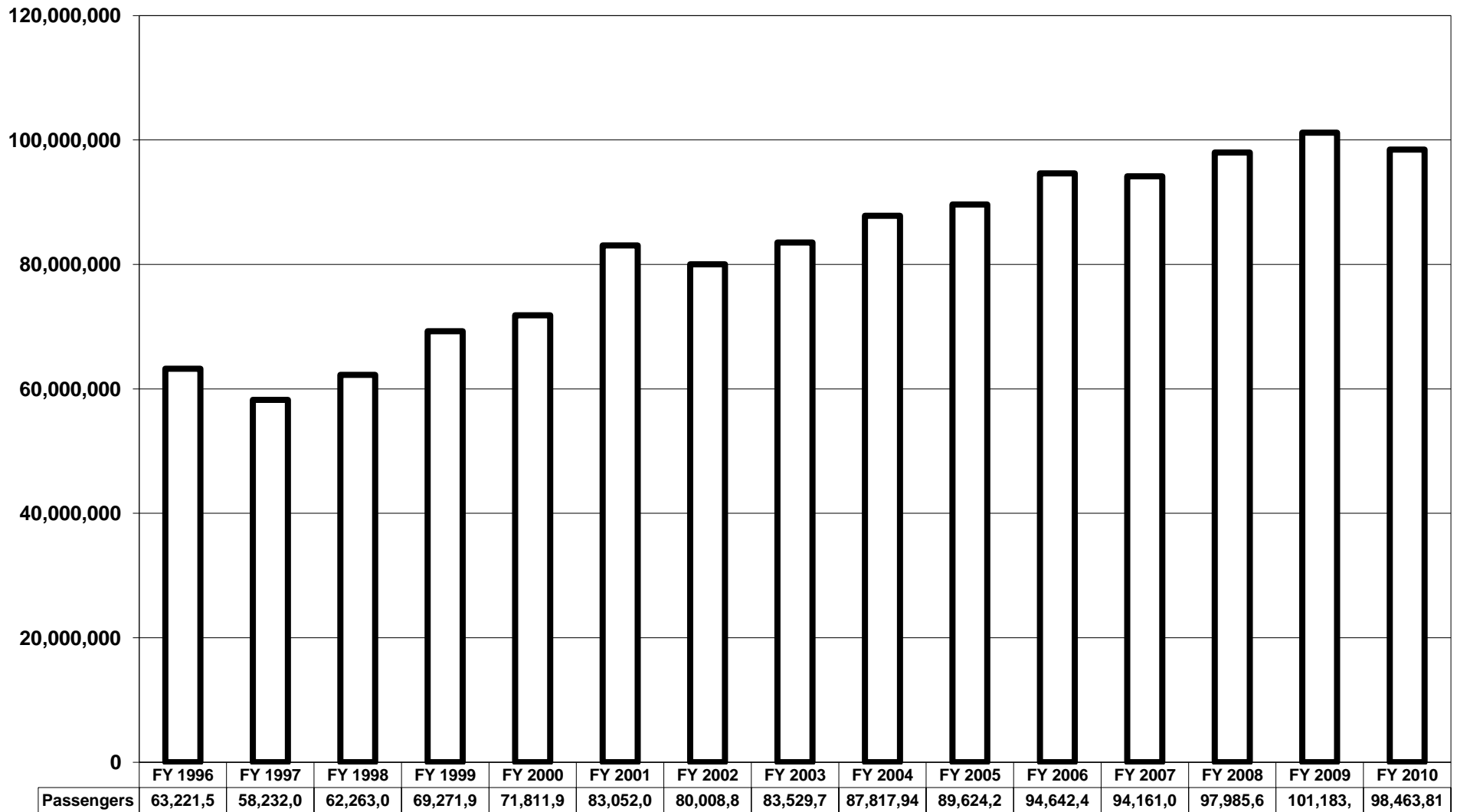
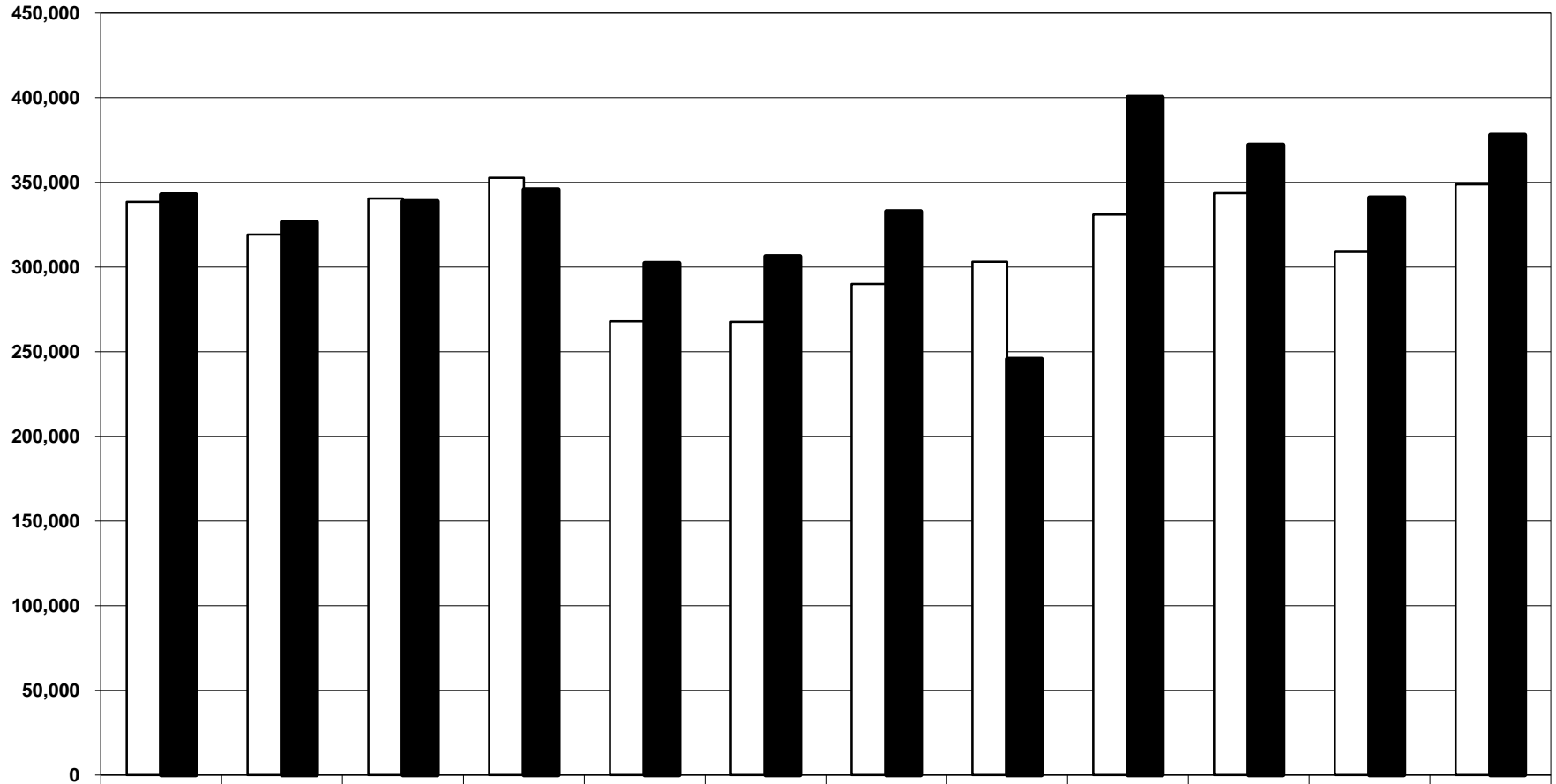


Figure 12: VRE Monthly Passenger Trips, FY 2009 - 2010



	July	August	September	October	November	December	January	February	March	April	May	June
FY 2009 Passengers	338,591	319,222	340,516	352,652	268,071	267,618	289,997	303,116	331,002	343,696	309,040	348,826
FY 2010 Passengers	342,930	326,594	338,791	345,883	302,371	306,319	332,868	245,765	400,309	372,232	341,086	378,082

FY 2009 Passengers
 FY 2010 Passengers

Figure 13: VRE Annual Passenger Trips, FY 1994 - FY 2010

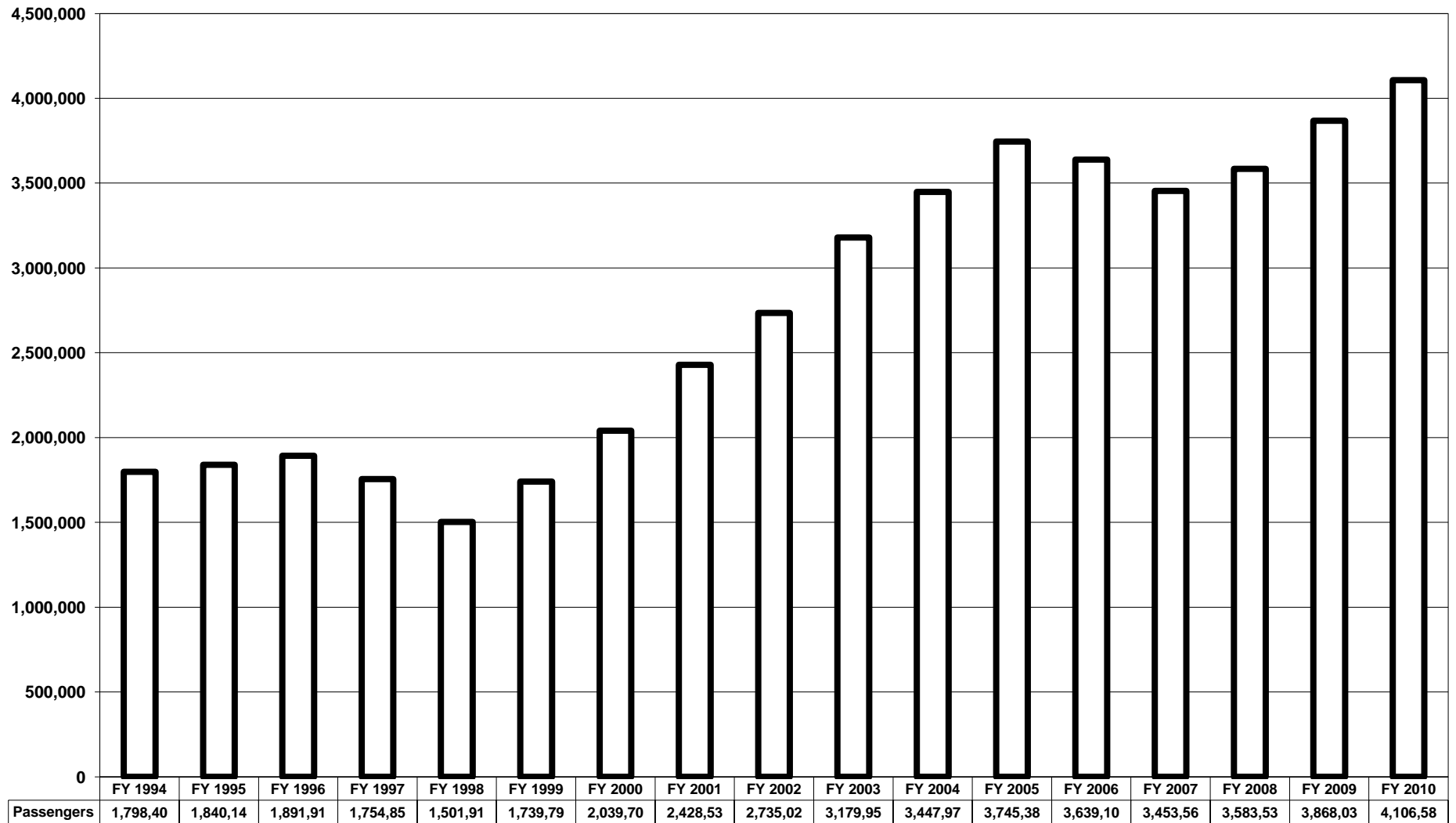


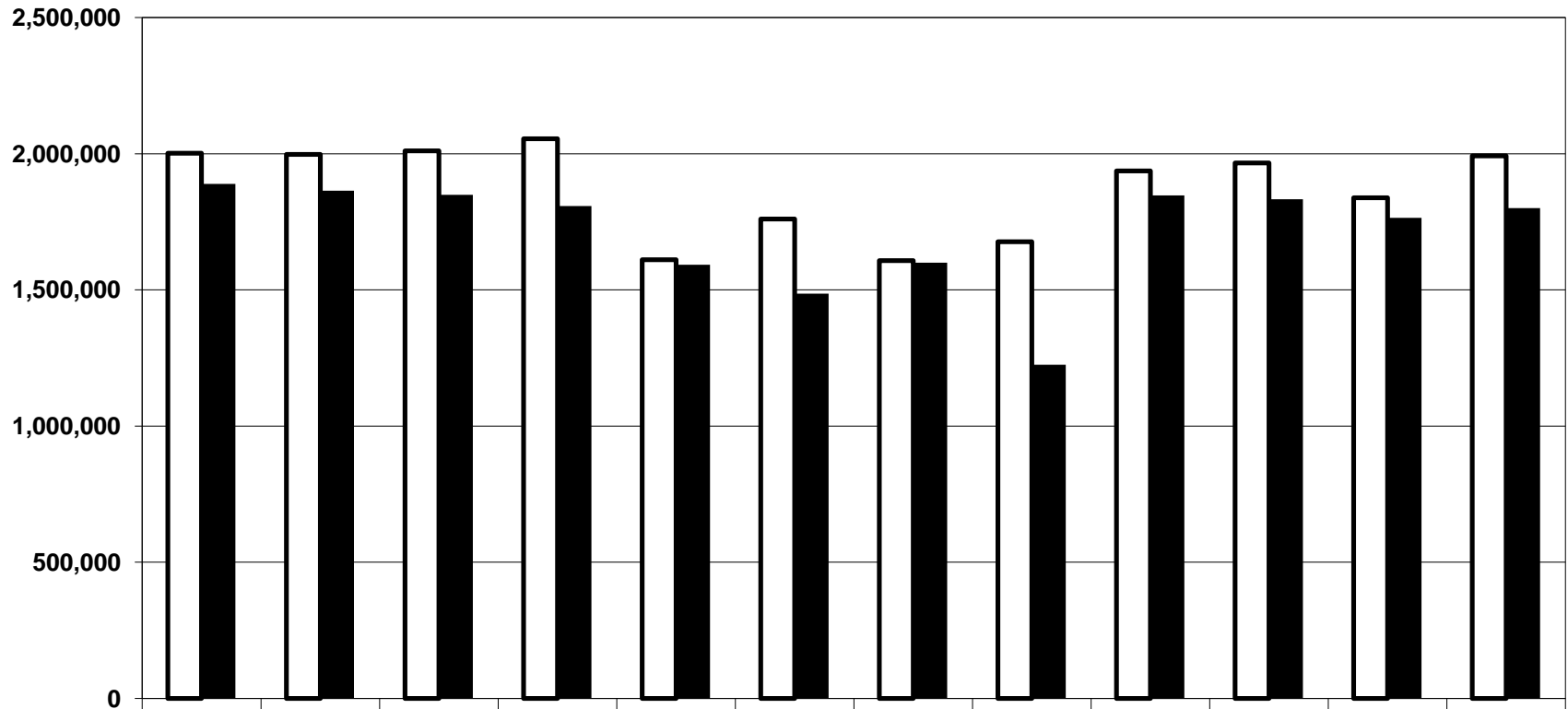
Figure 15: Northern Virginia Metrobus Average Daily Passenger Trips, FY 2009 - FY 2010

	Weekday FY 09	Saturday FY 09	Sunday FY 09	Weekday FY 10	Saturday FY 10	Sunday FY 10
Ballston Terminal Services						
1B,B/C,D,E,F,F/Z,Z/	5,055	3,021	2,108	4,852	2,843	1,892
2A,B,B/C,G	3,693	1,993	720	3,435	1,811	690
10B,B/C,D	2,718	1,822	1,092	2,454	1,702	447,232
22A,B,B/F	2,312	674		1,609	509	
23A,B,C,C/T,T/	3,927	2,453	1,535	3,561	2,163	1,374
24M,P	850			835		
25A,A/F,F/G,J,P,P/R	1,443	364	387	1,391	388	325
25B	1,406	682		1,362	549	
38B	2,841	1,543	882	3,608	1,810	1,278
Subtotal	24,244	12,552	6,724	23,108	11,775	452,792
Rosslyn Terminal Services						
3A,B,C,E,F	2,581	1,003	972	2,447	882	620
4A,B,E,H,S	2,428	742	475	2,113	698	408
Subtotal	5,009	1,745	1,448	4,560	1,579	1,028
Pentagon Terminal Services						
7A,A/C,E,F,H,P,W,X	4,686	1,619	1,167	4,544	1,466	1,158
8S,W,X,Z	1,250			1,196		
9A,B,C,C/E	1,739	1,051	745	1,606	974	677
10A,A/E	2,479	1,730	920	2,418	1,486	856
13A,B,F,G,M	857	144	171	823	110	92
16A,B,B/C,D,E,F,J	6,904	4,741	2,637	6,694	4,286	2,662
16L	215			223		
16G,H,K,W	4,108	2,579	1,532	3,908	2,438	1,444
17 Series	1,590			1,454		
18 Series	1,679			1,569		
21A,B,C,D,F	733			534		
28F,G	787			750		
29C,E,H,X	1,064			1,044		
Subtotal	28,092	11,864	7,172	26,764	10,760	6,888
Other Terminal Services						
2W	219				<i>Discontinued</i>	
REX	3,790	2,165	910	3,627	1,889	756
11Y	392			410		
12 Series	2,144				<i>Discontinued</i>	
15K,L	531			436		
15M				144		
20 Series	431				<i>Discontinued</i>	
24T	190			178		
TAGS Shuttle	729			753		
28A,B,B/	5,317	3,490	2,800	4,880	3,436	2,737
29K,N,N/	2,128	1,119		2,184	1,035	
2T	896	559	247	815	515	301
3T	1,054	336		783	319	
3Y	399			328		
9S	1,343			1,361		
16Y	1,233			1,185		
28T	629			564		
Subtotal	21,715	7,668	3,956	17,648	7,194	3,794
Metrobus Total-Virginia	79,061	33,829	19,300	72,079	31,309	464,501

Figure 16: Northern Virginia Metrobus Annual Passenger Trips, FY 2009 - FY 2010

	Weekday FY 09	Saturday FY 09	Sunday FY 09	Weekday FY 10	Saturday FY 10	Sunday FY 10
Ballston Terminal Services						
1B,B/C,D,E,F,F/Z,Z/	1,261,339	157,005	109,501	1,232,474	147,835	105,288
2A,B,B/C,G	919,797	103,871	37,199	872,543	94,173	37,964
10B,B/C,D	678,209	94,817	56,707	620,917	88,509	447,232
22A,B,B/F	574,313	35,062		407,124	26,464	
23A,B,C,C/T,T/	978,835	127,436	79,499	900,973	112,482	75,584
24M,P	211,699			50,943		
25A,A/F,F/G,J,P,R	359,223	18,836	20,067	350,407	20,162	17,874
25B	350,725	35,527		343,202	28,568	
38B	682,048	80,251	45,876	912,870	94,129	70,295
Subtotal	6,016,188	652,805	348,849	5,691,453	612,322	754,237
Rosslyn Terminal Services						
3A,B,C,E,F	643,711	52,100	50,533	619,008	45,840	34,706
4A,B,E,H,S	604,528	38,568	24,567	534,693	36,286	22,838
Subtotal	1,248,239	90,668	75,100	1,153,701	82,126	57,544
Pentagon Terminal Services						
7A,A/C,E,F,H,P,W,X	1,166,597	84,201	60,642	1,154,253	76,251	63,692
8S,W,X,Z	310,815			301,411		
9A,B,C,C/E	433,644	54,678	38,736	406,407	50,656	37,220
10A,A/E	616,917	89,777	47,883	611,662	77,250	47,937
13A,B,F,G,M	213,718	7,398	8,994	207,370	5,164	4,577
16A,B,B/C,D,E,F,J	1,721,573	246,951	137,028	1,700,308	222,880	149,091
16L	53,283			55,851		
16G,H,K,W	1,023,455	133,966	79,446	992,559	126,781	80,836
17 Series	396,024			367,606		
18 Series	417,796			395,893		
21A,B,C,D,F	182,521			133,952		
28F,G	195,945			189,122		
29C,E,H,X	265,064			263,108		
Subtotal	6,997,352	616,971	372,729	6,779,502	558,982	383,353
Other Terminal Services						
2W	53,883				<i>Discontinued</i>	
REX	944,912	112,470	47,262	917,675	98,232	41,587
11Y	97,586			102,915		
12 Series	529,666				<i>Discontinued</i>	
15K,L	132,427			110,346		
15M				36,117		
20 Series	106,442				<i>Discontinued</i>	
24T	47,279			44,390		
TAGS Shuttle	181,843			189,727		
28A,B,B/	1,326,171	181,499	145,713	1,239,510	178,690	153,261
29K,N,N/	530,613	58,135		552,557	53,795	
2T	223,105	28,901	12,779	207,017	26,789	16,556
3T	262,431	17,421		197,366	16,573	
3Y	99,373			82,706		
9S	333,988			342,949		
16Y	307,011			299,684		
28T	156,961			141,625		
Subtotal	5,333,691	398,426	205,754	4,464,584	374,079	211,404
Metrobus Total-Virginia	19,595,470	1,758,870	1,002,432	18,089,240	1,627,509	1,406,538

**Figure 17: Metrobus Northern Virginia Passenger Trips
Monthly Totals, FY2009 - 2010**



	July	August	September	October	November	December	January	February	March	April	May	June
FY 2009 Passengers	2,001,532	1,997,314	2,009,997	2,054,820	1,611,106	1,760,237	1,607,519	1,676,972	1,936,650	1,966,113	1,838,106	1,992,483
FY 2010 Passengers	1,889,137	1,863,762	1,848,888	1,807,933	1,591,935	1,486,209	1,599,826	1,225,503	1,846,949	1,832,207	1,763,950	1,799,795

FY 2009 Passengers

 FY 2010 Passengers

**Figure 18: Metrobus Northern Virginia Annual Passenger Trips,
FY 1996 - FY 2010**

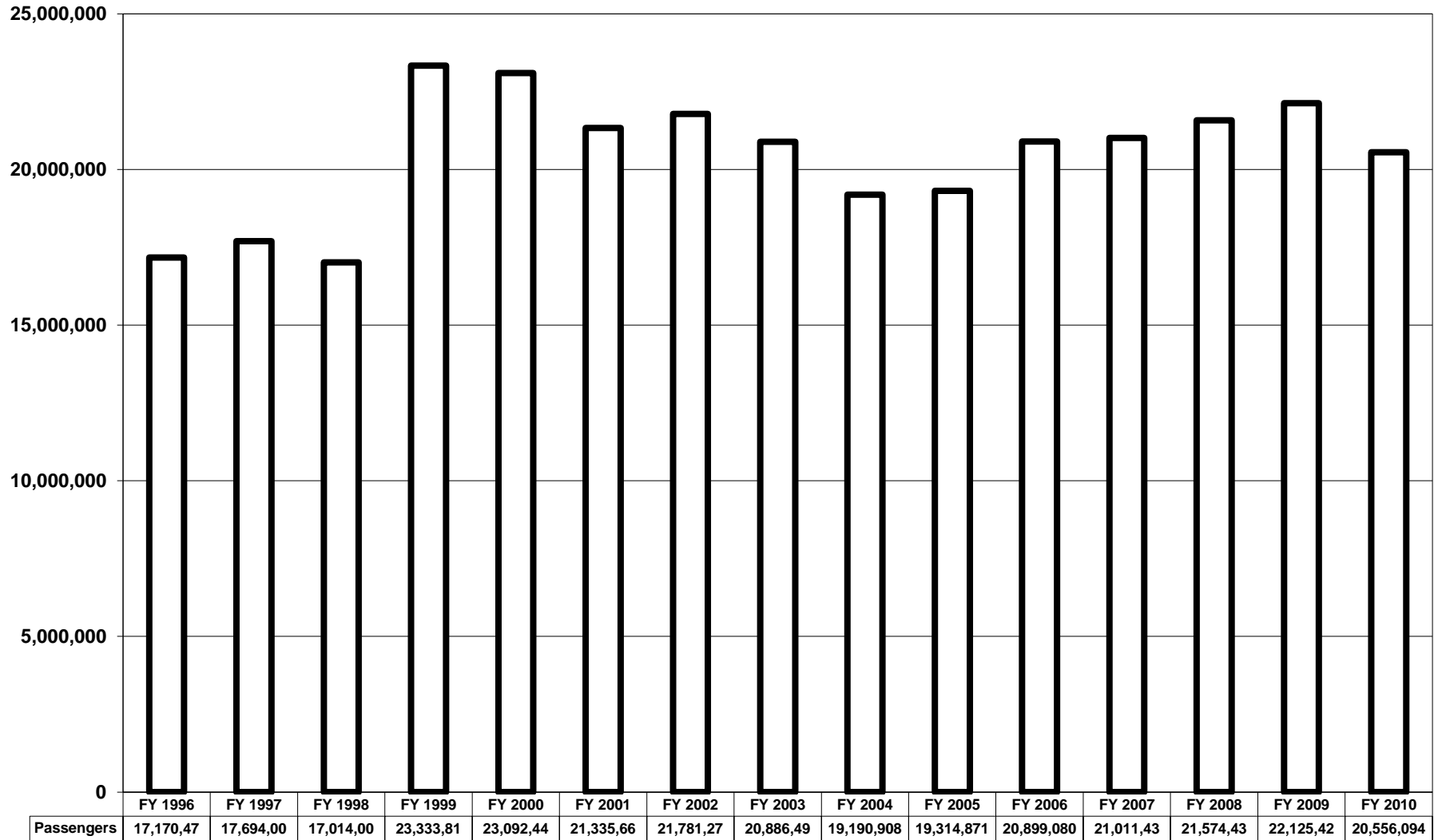


Figure 20: ART Annual Passenger Trips, FY 1994 - FY 2010

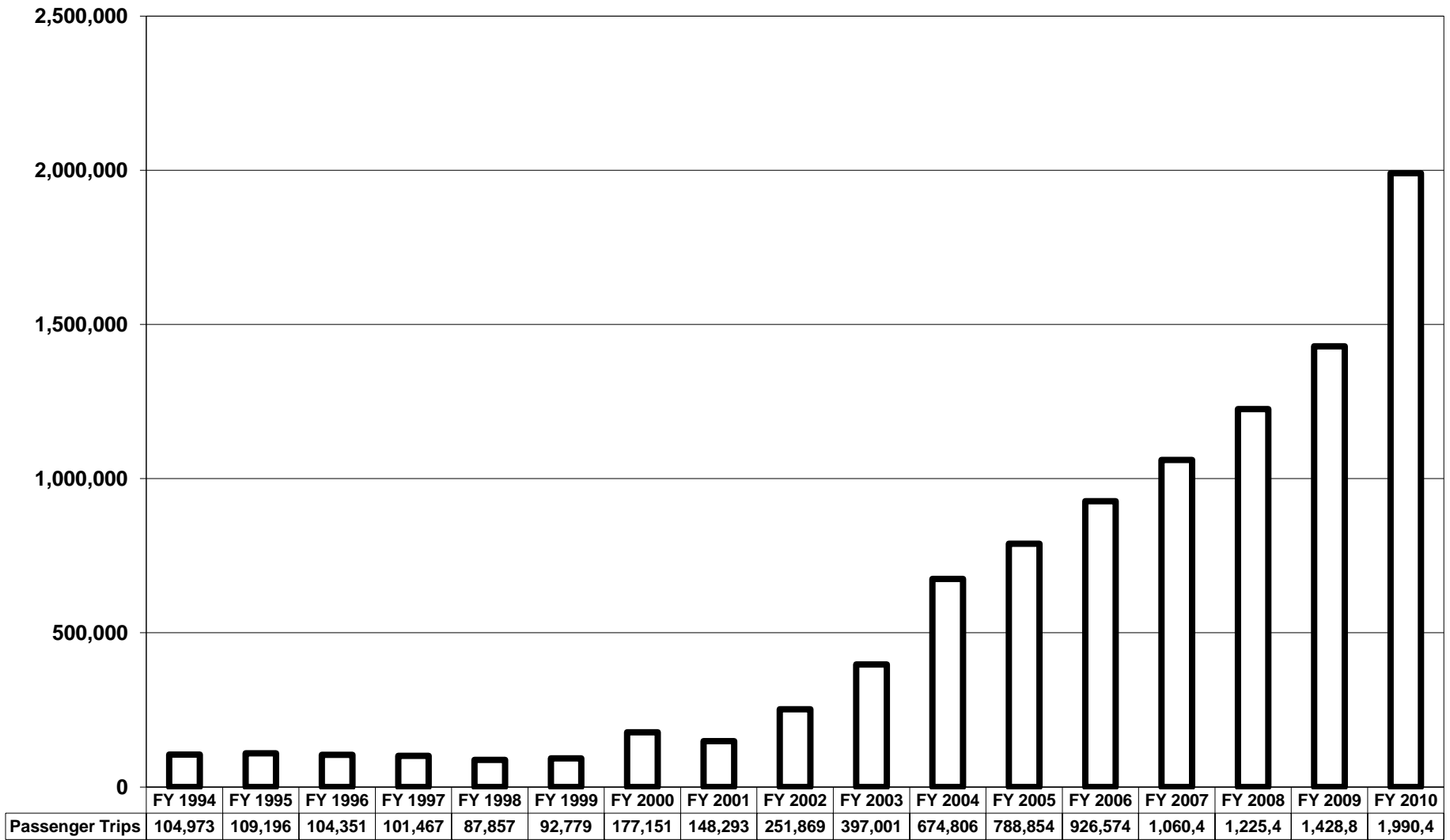


Figure 21: CUE Annual Passenger Trips, FY 1994 - FY 2010

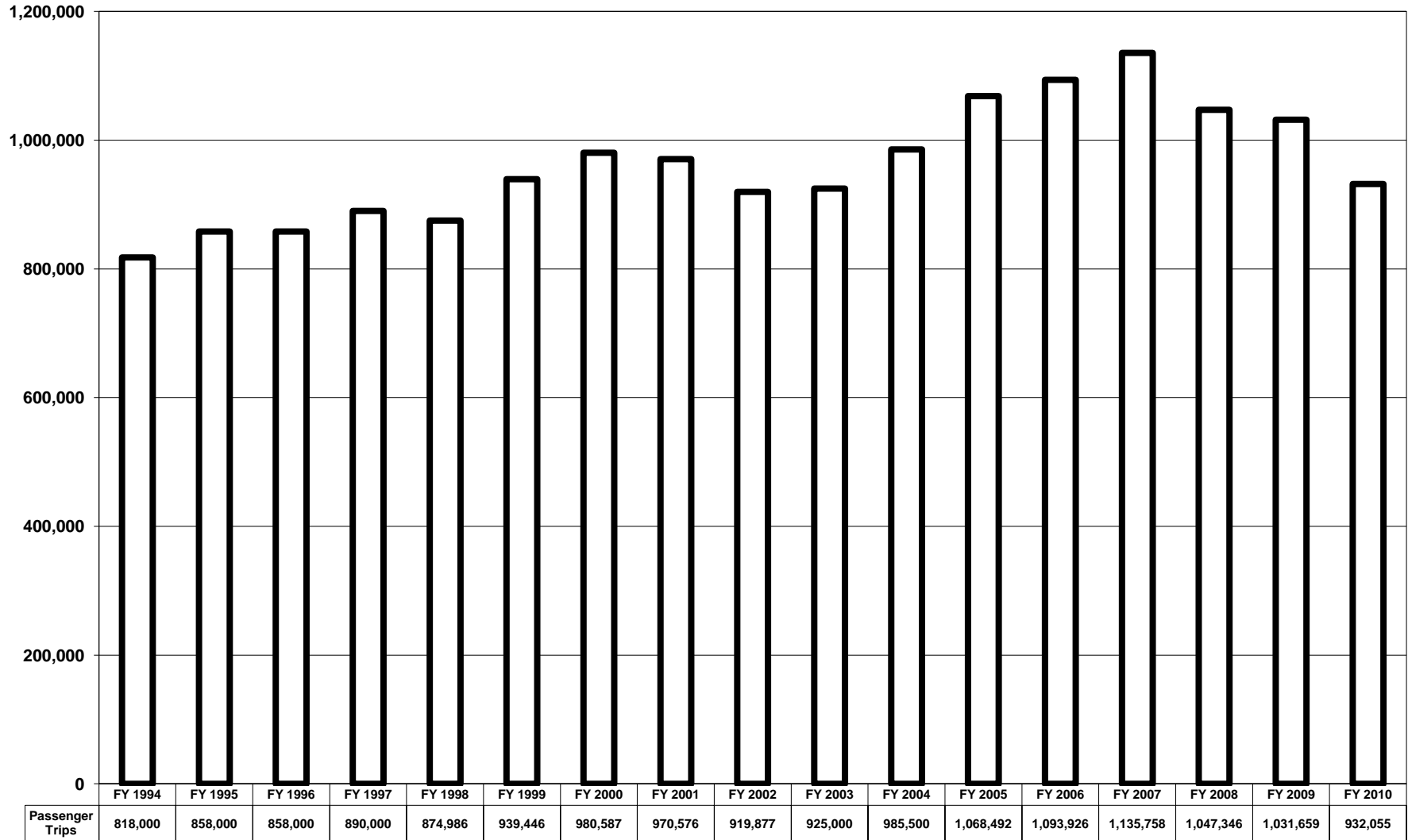


Figure 22: DASH Annual Passenger Trips, FY 1984 - FY 2010

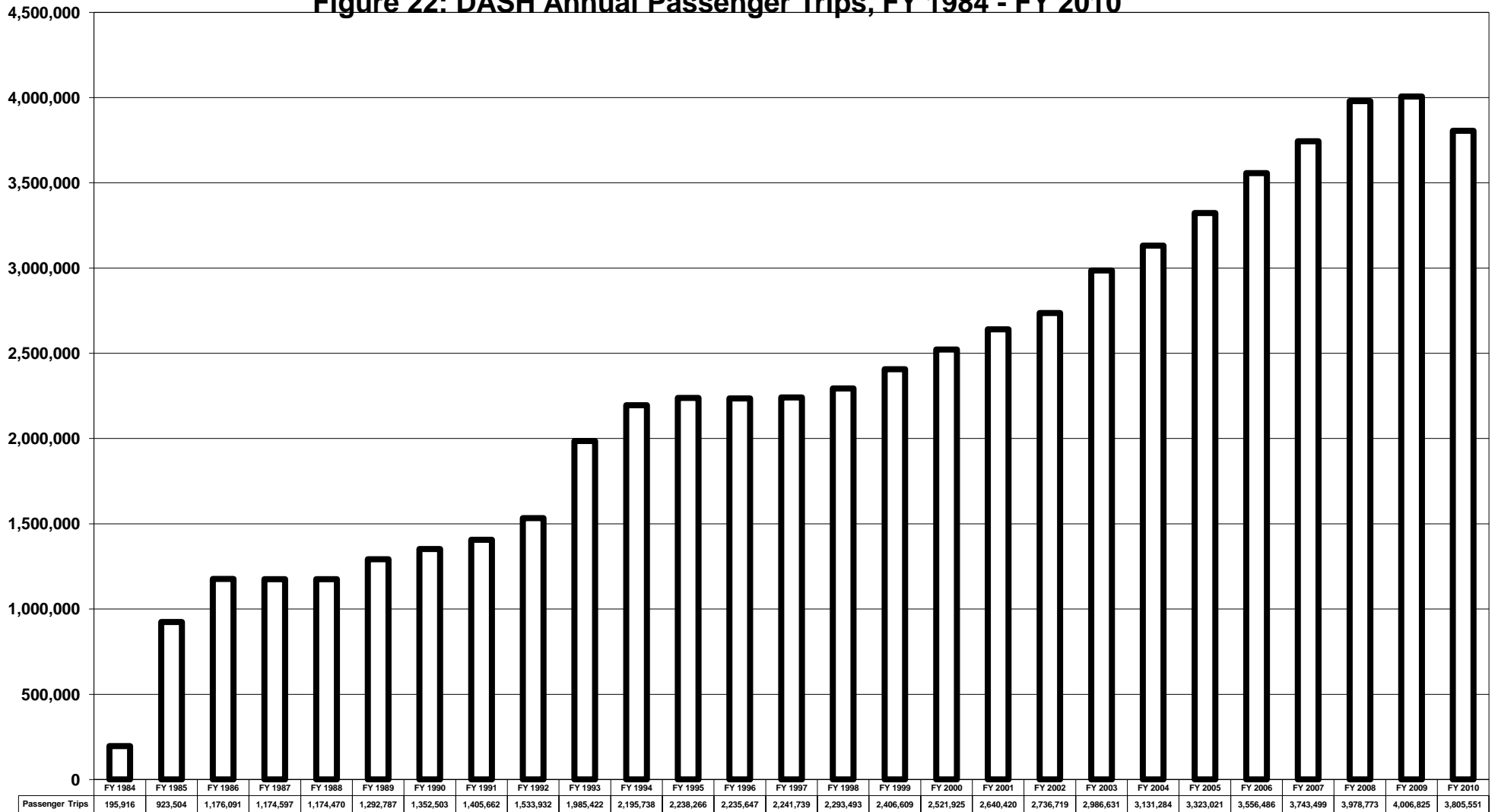


Figure 24: Fairfax Connector Annual Passenger Trips, FY 1994 - FY 2010

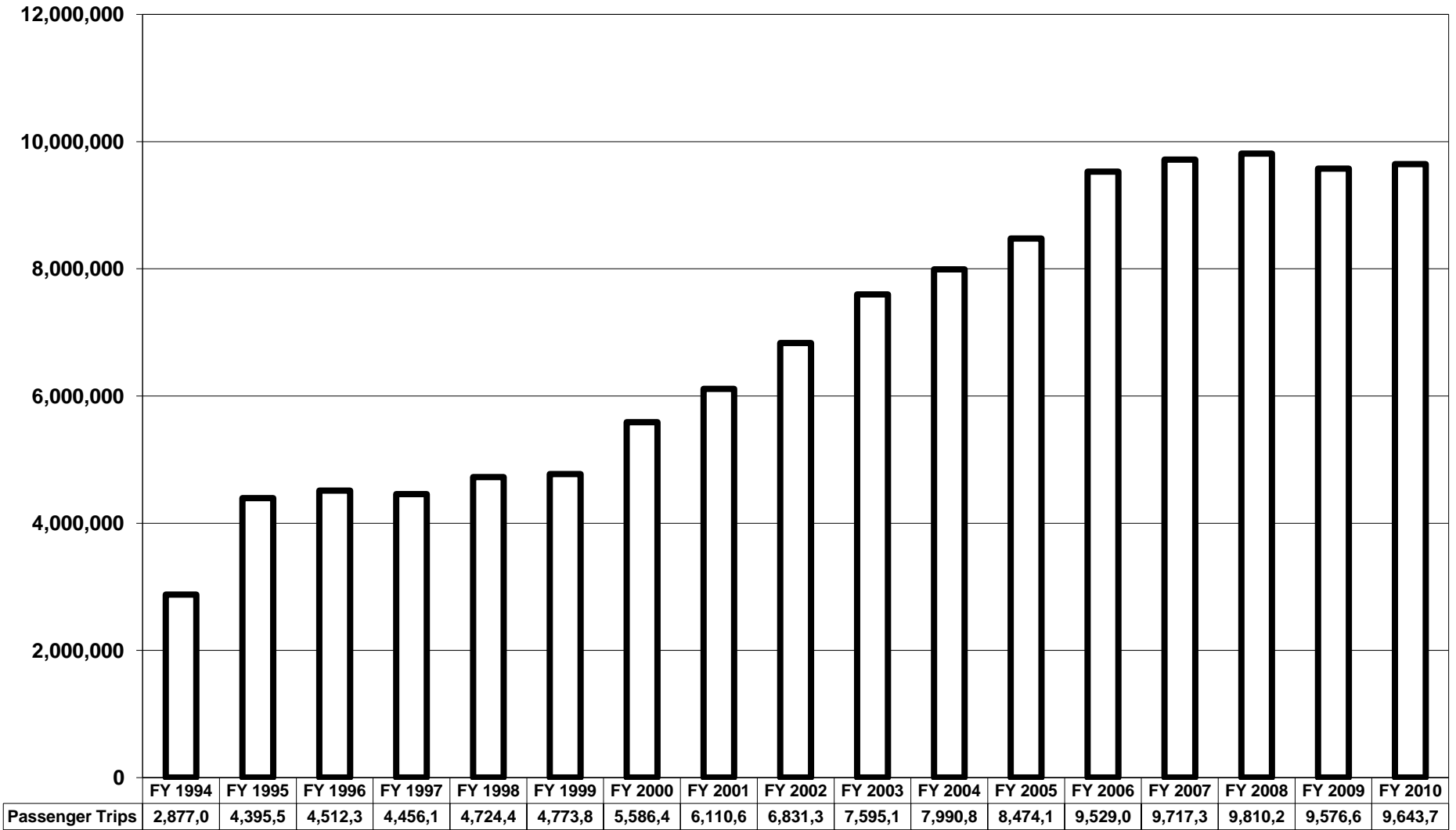


Figure 25: Loudoun County Transit Annual Passenger Trips, FY 1995 - FY 2010

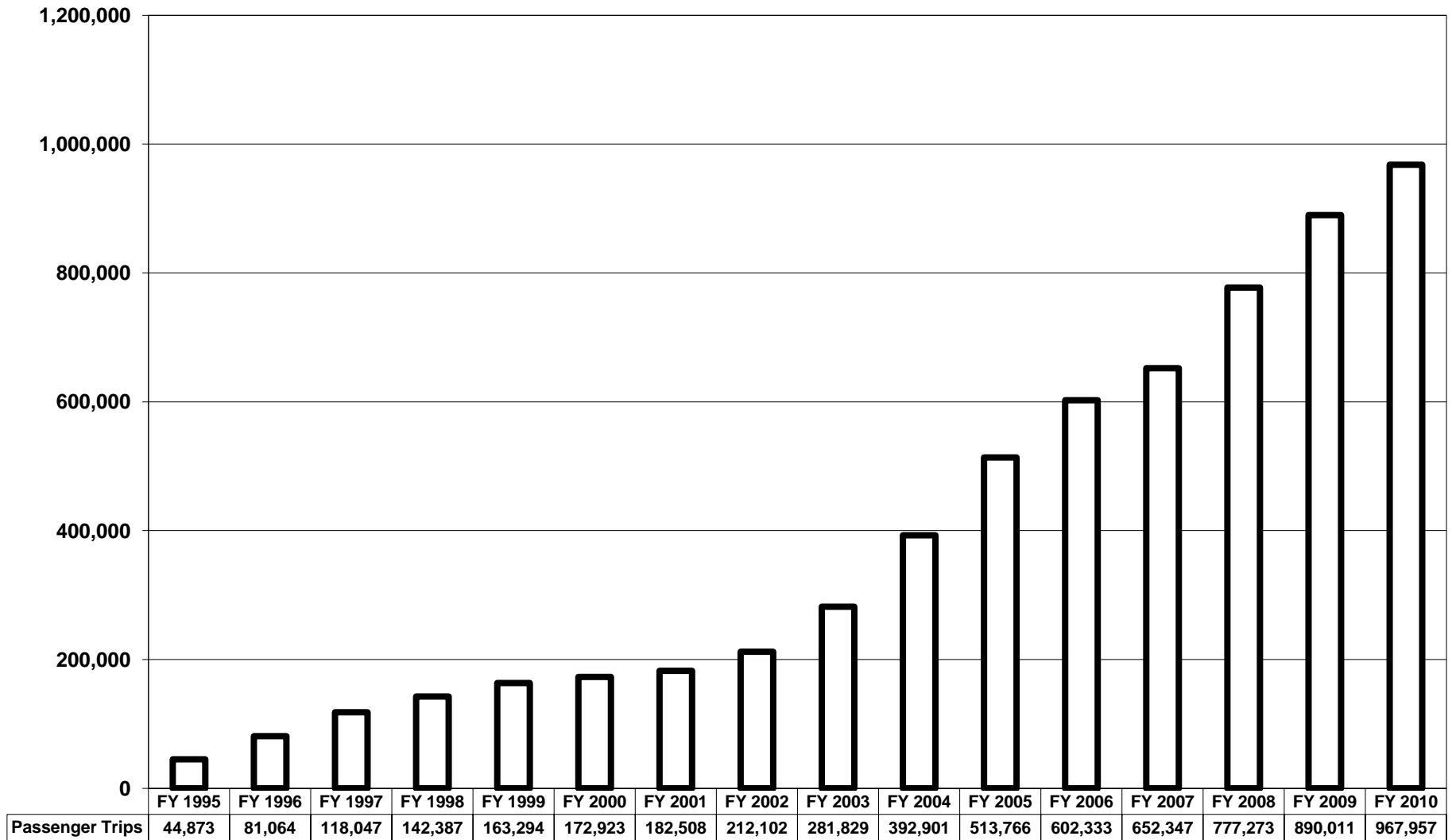


Figure 26: PRTC Omni Ride Annual Passenger Trips, FY 1994 - FY 2010

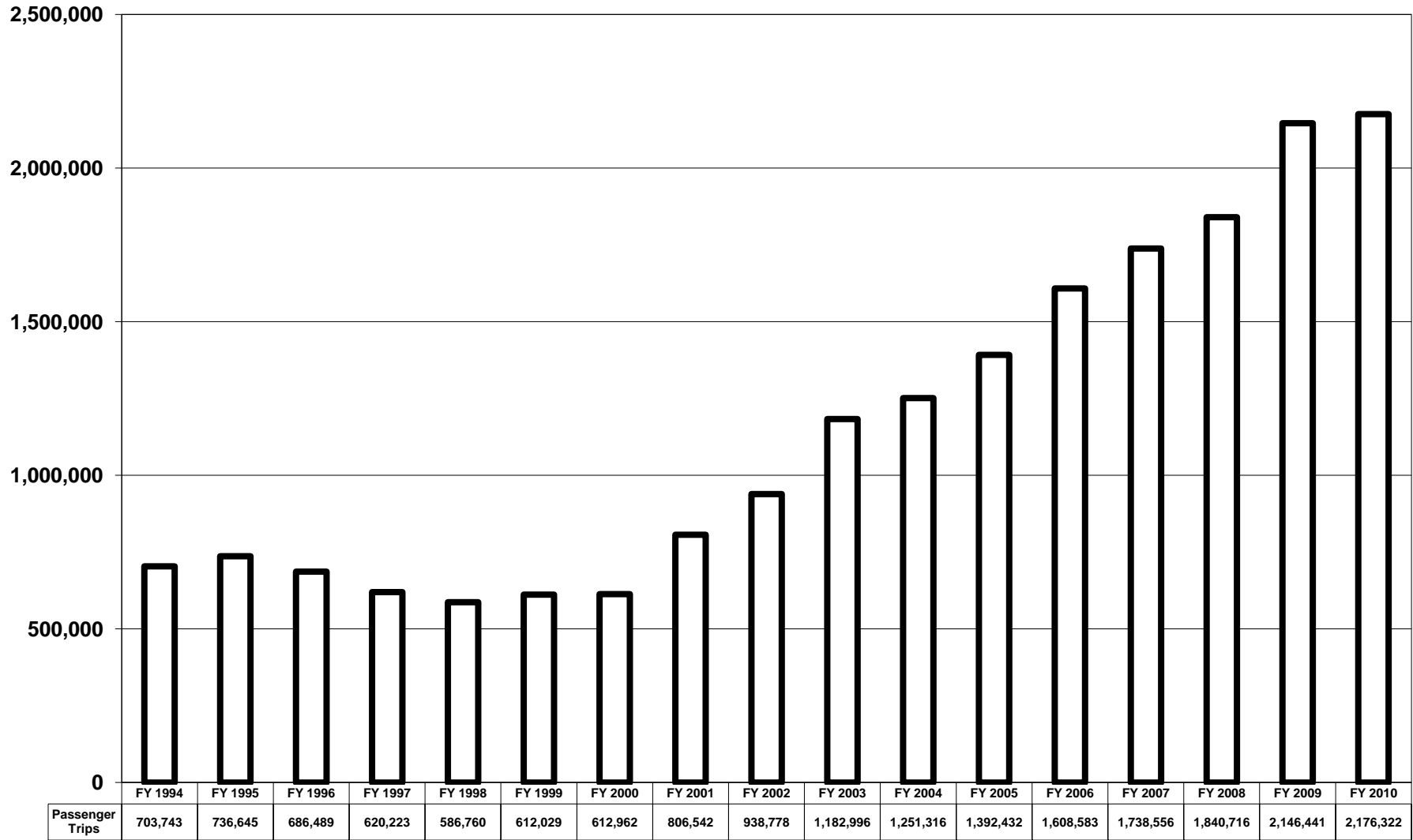


Figure 27: PRTC Omni Link Annual Passenger Trips, FY 1995 - FY 2010

